

Datasheet for ABIN6940540

**anti-S100A2 antibody**

## 6 Images

[Go to Product page](#)

## Overview

Quantity:	100 µg
Target:	S100A2
Reactivity:	Human
Host:	Mouse
Clonality:	Monoclonal
Application:	Western Blotting (WB), Immunohistochemistry (IHC), Immunofluorescence (IF), Flow Cytometry (FACS), Staining Methods (StM)

## Product Details

Immunogen:	Recombinant full-length human S100A2 protein
Clone:	CPTC-S100A2-2
Isotype:	IgG2b kappa
Purification:	Purified by Protein A/G

## Target Details

Target:	S100A2
Alternative Name:	S100A2 ( <a href="#">S100A2 Products</a> )
Background:	S100A2 belongs to the S100 family of proteins containing 2 EF-hand calcium-binding motifs. S100A2 may function as a modulator against excess calcium accumulation in normal human mammary epithelial cells and also have a role in suppressing tumor cell growth. This protein may have a tumor suppressor function. Chromosomal rearrangements and altered expression

## Target Details

of this gene have been implicated in breast cancer. Cytoplasmic overexpression may also be of prognostic significance when observed in oral cancer patients, and the S100A2 has also been identified as significantly down-regulated in gastric cancer.

Molecular Weight: 11.12kDa

Gene ID: 6273

UniProt: [P29034](#)

Pathways: [S100 Proteins](#)

## Application Details

Application Notes: Positive Control: HeLa, A549, HACAT, BxPC3 and A431 cell lysates, Skin and squamous cell cervical carcinoma.

Known Application: Western Blot (1-2 µg/mL), Flow Cytometry (1-2 µg/million cells), Immunofluorescence (1-2 µg/mL), Immunohistochemistry (Formalin-fixed) (0.5-1 µg/mL for 30 min at RT)(Staining of formalin-fixed tissues requires boiling tissue sections in 10 mM Citrate Buffer, pH 6.0, for 10-20 min followed by cooling at RT for 20 minutes)Optimal dilution for a specific application should be determined.

Restrictions: For Research Use only

## Handling

Concentration: 200 µg/mL

Buffer: 10 mM PBS with 0.05 % BSA & 0.05 % azide.

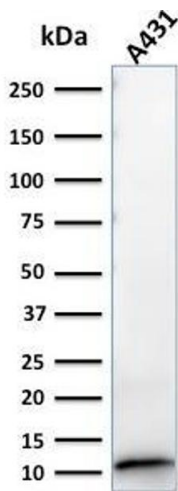
Preservative: Sodium azide

Precaution of Use: This product contains Sodium azide: a POISONOUS AND HAZARDOUS SUBSTANCE which should be handled by trained staff only.

Storage: 4 °C, -80 °C

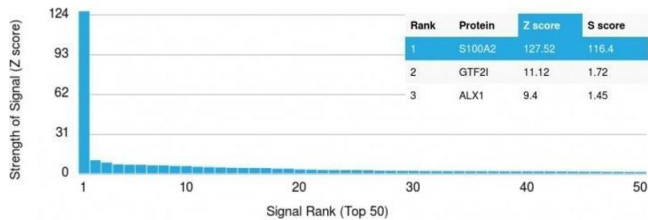
Storage Comment: Antibody with azide - store at 2 to 8°C. Antibody without azide - store at -20 to -80°C. Antibody is stable for 24 months. Non-hazardous. No MSDS required.

Expiry Date: 24 months



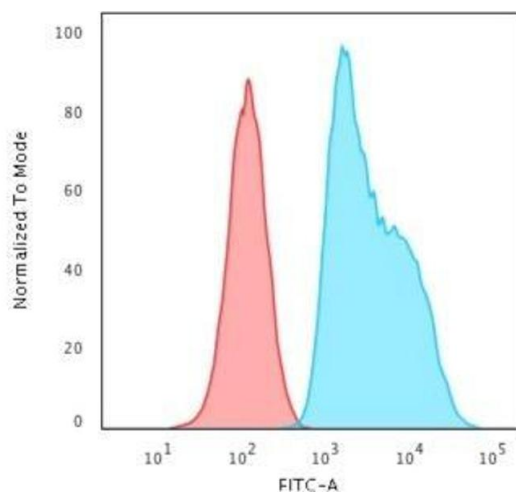
Western Blotting

**Image 1.** Western Blot Analysis of A431 cell lysate using S100A2 Mouse Monoclonal Antibody (CPTC-S100A2-2)



Protein Array

**Image 2.** Analysis of Protein Array containing more than 19,000 full-length human proteins using S100A2 Mouse Monoclonal Antibody (CPTC-S100A2-2). Z- and S- Score: The Z-score represents the strength of a signal that a monoclonal antibody (MAb) (in combination with a fluorescently-tagged anti-IgG secondary antibody) produces when binding to a particular protein on the HuProt™ array. Z-scores are described in units of standard deviations (SD's) above the mean value of all signals generated on that array. If targets on HuProt™ are arranged in descending order of the Z-score, the S-score is the difference (also in units of SD's) between the Z-score. S-score therefore represents the relative target specificity of a MAb to its intended target. A MAb is considered to specific to its intended target, if the MAb has an S-score of at least 2.5. For example, if a MAb binds to protein X with a Z-score of 43 and to protein Y with a Z-score of 14, then the S-score for the binding of that MAb to protein X is equal to 29.



### Flow Cytometry

**Image 3.** Flow Cytometric Analysis of trypsinised HeLa cells. S100A2 Mouse Monoclonal Antibody (CPTC-S100A2-2) followed by Goat anti-Mouse IgG-CF488 (Blue); Isotype Control (Red).

Please check the [product details page](#) for more images. Overall 6 images are available for ABIN6940540.