



[Go to Product page](#)

Datasheet for ABIN6940564

## anti-SAT1 antibody

### 2 Images

#### Overview

Quantity:	100 µg
Target:	SAT1
Reactivity:	Human
Host:	Mouse
Clonality:	Monoclonal
Conjugate:	This SAT1 antibody is un-conjugated
Application:	ELISA, Coating (Coat)

#### Product Details

Immunogen:	Recombinant full-length human SAT1 protein
Clone:	CPTC-SAT1-3
Isotype:	IgG2a kappa
Purification:	Purified by Protein A/G

#### Target Details

Target:	SAT1
Alternative Name:	SAT1 ( <a href="#">SAT1 Products</a> )
Background:	Spermidine/spermine N1-acetyltransferase 1 (SAT1 or SSAT1) is the key regulatory enzyme in the catabolism of polyamines, catalyzing acetylation of spermidine or spermine to generate N1-acetyl spermidine or N1-acetyl spermine, and N1, N12-diacetylspermine. The cellular level of SAT1 is normally extremely low, but it is induced rapidly by a variety of stimuli, including

## Target Details

---

polyamines, polyamine analogs, toxic chemicals, certain drugs, and growth factors.

Downregulation of SAT1 has been reported in Epstein-Barr virus positive Burkitt's lymphoma cells.

---

Molecular Weight: 20kDa

---

Gene ID: 6303

---

UniProt: [P21673](#)

## Application Details

---

Application Notes: Positive Control: Human liver tissue lysate, human tonsil or kidney.  
Known Application: ELISA (For coating, order Ab without BSA), Optimal dilution for a specific application should be determined.

---

Restrictions: For Research Use only

## Handling

---

---

Concentration: 200 µg/mL

---

Buffer: 10 mM PBS with 0.05 % BSA & 0.05 % azide.

---

Preservative: Sodium azide

---

Precaution of Use: This product contains Sodium azide: a POISONOUS AND HAZARDOUS SUBSTANCE which should be handled by trained staff only.

---

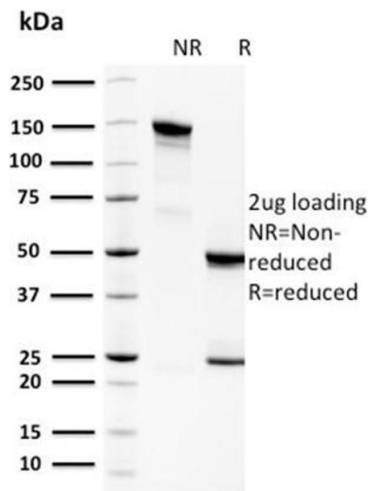
Storage: 4 °C, -80 °C

---

Storage Comment: Antibody with azide - store at 2 to 8°C. Antibody without azide - store at -20 to -80°C. Antibody is stable for 24 months. Non-hazardous. No MSDS required.

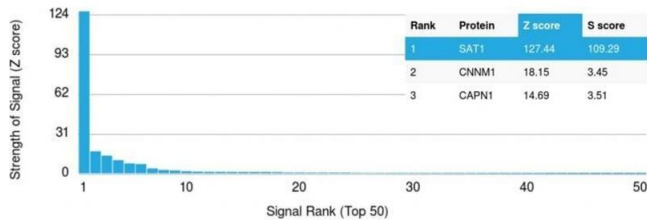
---

Expiry Date: 24 months



### SDS-PAGE

**Image 1.** SDS-PAGE Analysis Purified Spermidine Monoclonal Antibody (CPTC-SAT1-3). Confirmation of Purity and Integrity of Antibody



### Protein Array

**Image 2.** Analysis of Protein Array containing more than 19,000 full-length human proteins using Spermidine Monoclonal Antibody (CPTC-SAT1-3). Z- and S- Score: The Z-score represents the strength of a signal that a monoclonal antibody (Monoclonal Antibody) (in combination with a fluorescently-tagged anti-IgG secondary antibody) produces when binding to a particular protein on the HuProt™ array. Z-scores are described in units of standard deviations (SD's) above the mean value of all signals generated on that array. If targets on HuProt™ are arranged in descending order of the Z-score, the S-score is the difference (also in units of SD's) between the Z-score. S-score therefore represents the relative target specificity of a Monoclonal Antibody to its intended target. A Monoclonal Antibody is considered to specific to its intended target, if the Monoclonal Antibody has an S-score of at least 2.5. For example, if a Monoclonal Antibody binds to protein X with a Z-score of 43 and to protein Y with a Z-score of 14, then the S-score for the binding of that Monoclonal Antibody to protein X is equal to 29.