

Datasheet for ABIN6940567

## anti-Chp2 antibody

3 Images



[Go to Product page](#)

### Overview

Quantity:	100 µg
Target:	Chp2
Reactivity:	Human
Host:	Mouse
Clonality:	Monoclonal
Conjugate:	This Chp2 antibody is un-conjugated
Application:	Western Blotting (WB), Immunofluorescence (IF)

### Product Details

Immunogen:	Recombinant human full-length CHP2 protein
Clone:	CPTC-CHP2-1
Isotype:	IgG2c kappa
Purification:	Purified by Protein A/G

### Target Details

Target:	Chp2
Abstract:	<a href="#">Chp2 Products</a>
Background:	CHP2 (calcineurin B homologous protein 2), also known as hepatocellular carcinoma-associated antigen 520, is a 196 amino acid protein that contains 4 EF-hand domains and plays a potential role in transmembrane Na <sup>+</sup> /H <sup>+</sup> exchange. By binding to and activating NHE-1, CHP2 increases the pH and works to protect cells from serum deprivation-induced death. Though not

## Target Details

---

typically detected in normal tissues, CHP2 is highly expressed in malignantly transformed cells and is therefore considered to be a tumor-associated antigen. Ectopic expression of CHP2 promotes proliferation of HEK293 cells and knockdown of CHP2 mRNA in HepG2 cells inhibits cell proliferation. Like calcineurin B, CHP2 can bind to and stimulate phosphatase activity of calcineurin A and activate the calcineurin/NFAT signaling pathway.

Molecular Weight: 22kDa

Gene ID: 63928

UniProt: [O43745](#)

## Application Details

---

Application Notes: Positive Control: MCF-7, PC-3, HT29, K562 or Jurkat cell lysates. Human appendix or testis.  
Known Application: Western Blot (1-2 µg/mL), Immunofluorescence (1-2 µg/mL), Optimal dilution for a specific application should be determined.

Restrictions: For Research Use only

## Handling

---

Concentration: 200 µg/mL

Buffer: 10 mM PBS with 0.05 % BSA & 0.05 % azide.

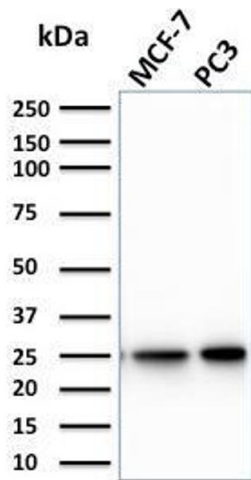
Preservative: Sodium azide

Precaution of Use: This product contains Sodium azide: a POISONOUS AND HAZARDOUS SUBSTANCE which should be handled by trained staff only.

Storage: 4 °C, -80 °C

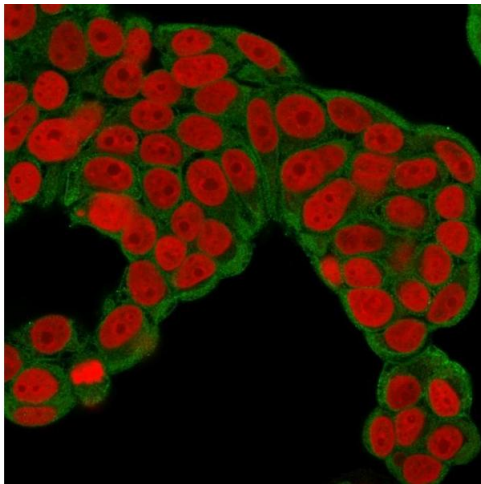
Storage Comment: Antibody with azide - store at 2 to 8°C. Antibody without azide - store at -20 to -80°C. Antibody is stable for 24 months. Non-hazardous. No MSDS required.

Expiry Date: 24 months



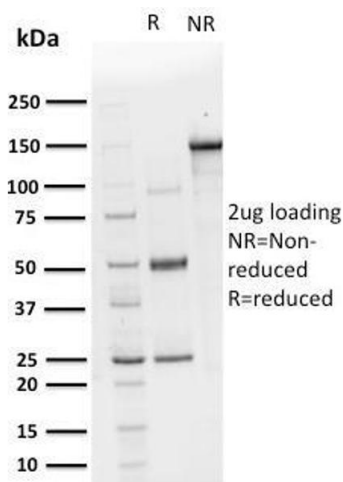
### Western Blotting

**Image 1.** Western Blot Analysis of MCF-7, PC3 cell lysate using CHP2 Mouse Monoclonal Antibody (CPTC-CHP2-1).



### Immunofluorescence

**Image 2.** Immunofluorescence Analysis of human MCF-7 cells labeling CHP2 with CHP2 Mouse Monoclonal Antibody (CPTC-CHP2-1) followed by Goat anti-Mouse IgG-CF488 (Green). The nuclear counterstain is Reddot (Red)



### SDS-PAGE

**Image 3.** SDS-PAGE Analysis Purified CHP2 Mouse Monoclonal Antibody (CPTC-CHP2-1). Confirmation of Purity and Integrity of Antibody.