



[Go to Product page](#)

Datasheet for ABIN6940578  
**anti-ST6GAL1 antibody**

3 Images

Overview

Quantity:	100 µg
Target:	ST6GAL1
Reactivity:	Human
Host:	Mouse
Clonality:	Monoclonal
Conjugate:	This ST6GAL1 antibody is un-conjugated
Application:	Immunohistochemistry (IHC), Flow Cytometry (FACS), Immunofluorescence (IF), Staining Methods (StM)

Product Details

Immunogen:	Nuclei from pokeweed mitogen-stimulated peripheral blood lymphocytes.
Clone:	LN-1
Isotype:	IgM kappa
Specificity:	Recognizes a neuraminidase-sensitive sialoprotein (CDw75), present on cell membrane and cytoplasm of germinal center B-cells and derived lymphomas. This MAb reacts with RBC precursors of bone marrow, ductal and ciliated epithelial cells of kidney, breast, prostate, pancreas, lung, and with glioblastomas, astrocytomas, and Reed Sternberg cells in lymphocyte predominant Hodgkin s disease. It is shown to be a helpful antibody for ascribing a B-cell phenotype in known lymphoid tissues.

## Target Details

---

Target: ST6GAL1

Alternative Name: ST6GAL1 ([ST6GAL1 Products](#))

Molecular Weight: 46kDa

Gene ID: 6480

UniProt: [P15907](#)

## Application Details

---

Application Notes: Positive Control: HeLa or Daudi cells (IF/FACS). Germinal center B- cells in a lymph node or tonsil (IHC). Use LN1 s ability to stain surface of erythrocytes as an internal positive control.  
Known Application: Flow Cytometry (0.5-1 µg/million cells), Immunofluorescence (0.5-1 µg/mL), Immunohistochemistry (Formalin-fixed) (0.5-1.0 µg/mL for 30 minutes at RT),(Staining of formalin-fixed tissues requires boiling tissue sections in 10 mM citrate buffer, pH 6.0, for 10-20 min followed by cooling at RT for 20 minutes),Optimal dilution for a specific application should be determined.

Restrictions: For Research Use only

## Handling

---

Concentration: 200 µg/mL

Buffer: 10 mM PBS with 0.05 % BSA & 0.05 % azide.

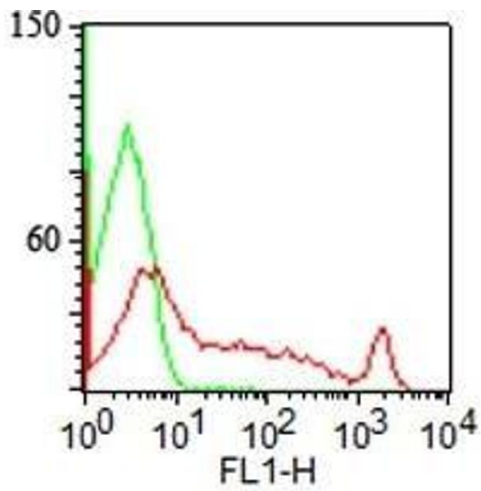
Preservative: Sodium azide

Precaution of Use: This product contains Sodium azide: a POISONOUS AND HAZARDOUS SUBSTANCE which should be handled by trained staff only.

Storage: 4 °C,-80 °C

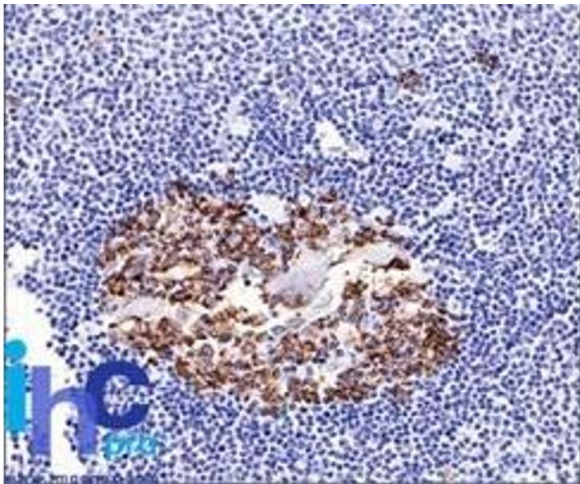
Storage Comment: Antibody with azide - store at 2 to 8°C. Antibody without azide - store at -20 to -80°C. Antibody is stable for 24 months. Non-hazardous. No MSDS required.

Expiry Date: 24 months



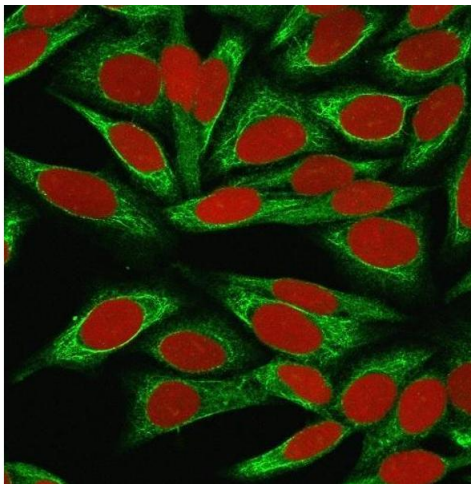
#### Immunofluorescence

**Image 1.** Surface staining of human lymphocytes with CDw75 Mouse Monoclonal Antibody (LN-1) (red) and isotype control (green). PPI negative population analyzed.



#### Immunohistochemistry

**Image 2.** Formalin-fixed, paraffin-embedded normal human spleen tissue stained with CDw75 Mouse Monoclonal Antibody (LN-1).



#### Immunofluorescence

**Image 3.** Immunofluorescence Analysis of MeOH-fixed HeLa cells labeled with CDw75 Mouse Monoclonal Antibody (LN-1) followed by goat anti-Mouse IgG-CF488 (Green). The nuclear counterstain is Reddot (Red).