

Datasheet for ABIN6940586

**anti-Melanoma gp100 antibody**[Go to Product page](#)**1** Image

## Overview

Quantity:	100 µg
Target:	Melanoma gp100 (PMEL)
Reactivity:	Human, Horse
Host:	Mouse
Clonality:	Monoclonal
Conjugate:	This Melanoma gp100 antibody is un-conjugated
Application:	Immunofluorescence (IF), Immunohistochemistry (IHC), Flow Cytometry (FACS), Staining Methods (StM)

## Product Details

Immunogen:	Membranes from a human melanoma metastasis
Clone:	SPM286
Isotype:	IgG2b kappa
Specificity:	By immunohistochemistry, it specifically recognizes a protein in melanocytes and melanomas. This MAb reacts with junctional and blue nevus cells and variably with fetal and neonatal melanocytes. Intradermal nevi, normal adult melanocytes, and non-melanocytic cells are negative. It does not stain tumor cells of epithelial, lymphoid, glial, or mesenchymal origin. This Mab labels formalin-fixed, paraffin-embedded melanomas and other tumors showing melanocytic differentiation.
No Cross-Reactivity:	Rat (Rattus)
Purification:	Purified by Protein A/G

Target Details

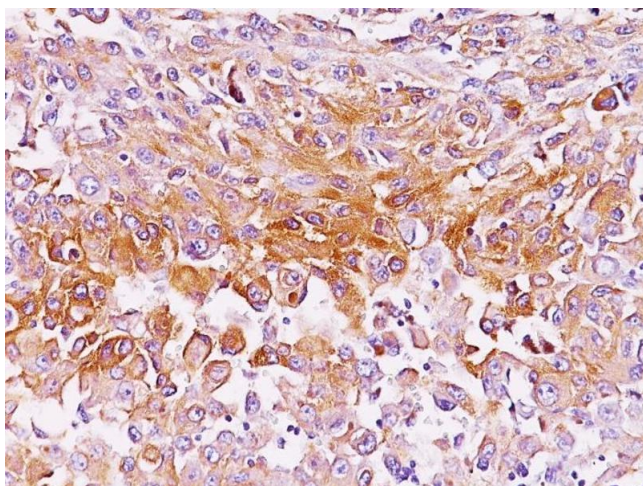
Target:	Melanoma gp100 (PMEL)
Alternative Name:	SILV ( <a href="#">PMEL Products</a> )
Molecular Weight:	90-100kDa
Gene ID:	6490
UniProt:	<a href="#">P40967</a>

Application Details

Application Notes:	Positive Control: SK-MEL-28 cells. Melanoma.  Known Application: Flow Cytometry (0.5-1 µg/million cells), Immunofluorescence (1-2 µg/mL), Immunohistochemistry (Formalin-fixed) (1-2 µg/mL for 30 minutes at RT)(Staining of formalin-fixed tissues requires boiling tissue sections in 10 mM citrate buffer, pH 6.0, for 10-20 min followed by cooling at RT for 20 minutes)Optimal dilution for a specific application should be determined.
Restrictions:	For Research Use only

Handling

Concentration:	200 µg/mL
Buffer:	10 mM PBS with 0.05 % BSA & 0.05 % azide.
Preservative:	Sodium azide
Precaution of Use:	This product contains Sodium azide: a POISONOUS AND HAZARDOUS SUBSTANCE which should be handled by trained staff only.
Storage:	4 °C,-80 °C
Storage Comment:	Antibody with azide - store at 2 to 8°C. Antibody without azide - store at -20 to -80°C. Antibody is stable for 24 months. Non-hazardous. No MSDS required.
Expiry Date:	24 months



#### Immunohistochemistry

**Image 1.** Formalin-fixed, paraffin-embedded human Melanoma stained with gp100 Monoclonal Antibody (SPM286).