

Datasheet for ABIN6940592

Recombinant anti-Melanoma gp100 antibody**3** Images[Go to Product page](#)

Overview

| | |
|----------------|--|
| Quantity: | 100 µg |
| Target: | Melanoma gp100 (PMEL) |
| Reactivity: | Human |
| Host: | Rabbit |
| Antibody Type: | Recombinant Antibody |
| Clonality: | Monoclonal |
| Conjugate: | This Melanoma gp100 antibody is un-conjugated |
| Application: | Immunohistochemistry (IHC), Staining Methods (StM) |

Product Details

| | |
|--------------|---|
| Immunogen: | Recombinant full-length human gp100 protein |
| Clone: | PMEL-1825R |
| Isotype: | IgG |
| Specificity: | <p>By immunohistochemistry, it specifically recognizes a protein in melanocytes and melanomas. This MAb reacts with junctional and blue nevus cells and variably with fetal and neonatal melanocytes. Intradermal nevi, normal adult melanocytes, and non-melanocytic cells are negative. It does not stain tumor cells of epithelial, lymphoid, glial, or mesenchymal origin. Metastatic amelanotic melanoma can often be confused with a variety of poorly differentiated carcinomas, large cell lymphomas, and sarcomas using H E stains alone. It is also difficult to differentiate melanoma from spindle cell carcinomas and various types of mesenchymal neoplasms. This MAb stains fetal and neonatal melanocytes, junctional and blue nevus cells,</p> |

Product Details

and malignant melanoma. This MAb also stains Angiomyolipoma (PEComa).

No Cross-Reactivity: Dog (Canine), Rat (Rattus)

Purification: Purified by Protein A/G

Target Details

Target: Melanoma gp100 (PMEL)

Alternative Name: SILV ([PMEL Products](#))

Molecular Weight: 90-100kDa

Gene ID: 6490

UniProt: [P40967](#)

Application Details

Application Notes: Positive Control: SK-MEL-28 cells. Melanoma.
Known Application: Immunohistochemistry (Formalin-fixed) (0.5-1.0 µg/mL for 30 minutes at RT)(Staining of formalin-fixed tissues requires boiling tissue sections in 10 mM citrate buffer, pH 6.0, for 10-20 min followed by cooling at RT for 20 minutes)Optimal dilution for a specific application should be determined.

Restrictions: For Research Use only

Handling

Concentration: 200 µg/mL

Buffer: 10 mM PBS with 0.05 % BSA & 0.05 % azide.

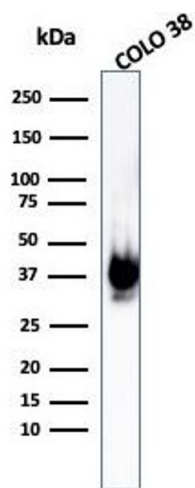
Preservative: Sodium azide

Precaution of Use: This product contains Sodium azide: a POISONOUS AND HAZARDOUS SUBSTANCE which should be handled by trained staff only.

Storage: 4 °C,-80 °C

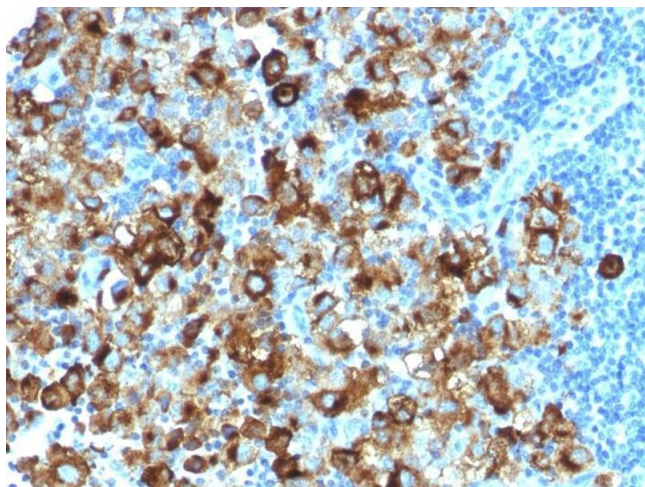
Storage Comment: Antibody with azide - store at 2 to 8°C. Antibody without azide - store at -20 to -80°C. Antibody is stable for 24 months. Non-hazardous. No MSDS required.

Expiry Date: 24 months



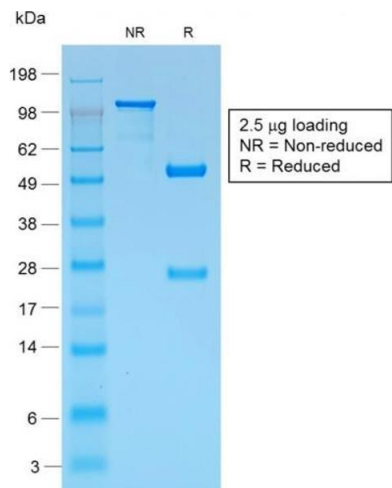
Western Blotting

Image 1. Western Blot Analysis of COLO-38 cell lysate using gp100 Rabbit Recombinant Monoclonal Antibody (PMEL/1825R).



Immunohistochemistry

Image 2. Formalin-fixed, paraffin-embedded human Melanoma stained with gp100 Rabbit Recombinant Monoclonal Antibody (PMEL/1825R).



SDS-PAGE

Image 3. SDS-PAGE Analysis Purified gp100 Rabbit Recombinant Monoclonal Antibody (PMEL/1825R). Confirmation of Purity and Integrity of Antibody.