

Datasheet for ABIN6940596

Recombinant anti-GLUT1 antibody (AA 203-305)



[Go to Product page](#)

2 Images

Overview

Quantity:	100 µg
Target:	GLUT1 (SLC2A1)
Binding Specificity:	AA 203-305
Reactivity:	Human
Host:	Mouse
Antibody Type:	Recombinant Antibody
Clonality:	Monoclonal
Conjugate:	This GLUT1 antibody is un-conjugated
Application:	Immunohistochemistry (IHC), ELISA, Coating (Coat), Staining Methods (StM)

Product Details

Immunogen:	Recombinant fragment of human GLUT1 protein (around aa 203-305) (exact sequence is proprietary)
Clone:	RGLUT1-2476
Isotype:	IgG1 kappa
Specificity:	Recognizes a protein of 55 kDa, which is identified as GLUT-1. Glucose transporters are integral membrane glycoproteins involved in transporting glucose into most cells. There are many types of glucose transport carrier proteins, designated as Glut-1 to Glut-12. Glut-1 is a major glucose transporter in the mammalian blood-brain barrier. It is expressed in high density on the membranes of human erythrocytes and the brain capillaries that comprise the blood-brain barrier. Glut-1 is expressed at variable levels in many human tissues. Overexpression of Glut-1

Product Details

has been linked to tumor progression or poor survival of patients with carcinomas of the colon, breast, cervical, lung, bladder and mesothelioma. Glut-1 is a sensitive and specific marker for the differentiation of malignant mesothelioma (positive) from reactive mesothelium (negative).

Purification: Purified by Protein A/G

Target Details

Target: GLUT1 (SLC2A1)

Alternative Name: SLC2A1 ([SLC2A1 Products](#))

Molecular Weight: 55kDa

Gene ID: 6513

UniProt: [P11166](#)

Pathways: [Sensory Perception of Sound](#), [Dicarboxylic Acid Transport](#), [Warburg Effect](#)

Application Details

Application Notes: Positive Control: K562, A431, MDA-MB-231 cells or erythrocytes. Mesothelioma or breast, colon and ovarian carcinoma.

Known Application: ELISA (For coating use Ab at 1-2 µg/mL order Ab without BSA), Immunohistochemistry (Formalin-fixed) (1-2 µg/mL for 30 minutes at RT) (Staining of formalin-fixed tissues requires boiling tissue sections in 10 mM citrate buffer, pH 6.0, for 10-20 min followed by cooling at RT for 20 minutes) Optimal dilution for a specific application should be determined.

Restrictions: For Research Use only

Handling

Concentration: 200 µg/mL

Buffer: 10 mM PBS with 0.05 % BSA & 0.05 % azide.

Preservative: Sodium azide

Precaution of Use: This product contains Sodium azide: a POISONOUS AND HAZARDOUS SUBSTANCE which should be handled by trained staff only.

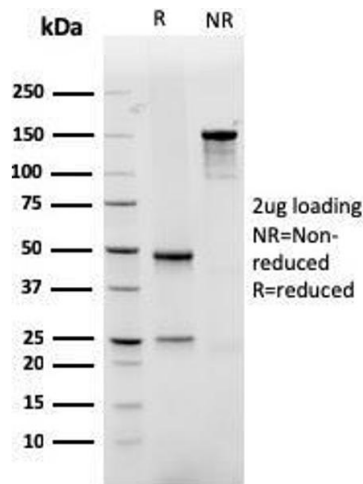
Storage: 4 °C, -80 °C

Handling

Storage Comment: Antibody with azide - store at 2 to 8°C. Antibody without azide - store at -20 to -80°C. Antibody is stable for 24 months. Non-hazardous. No MSDS required.

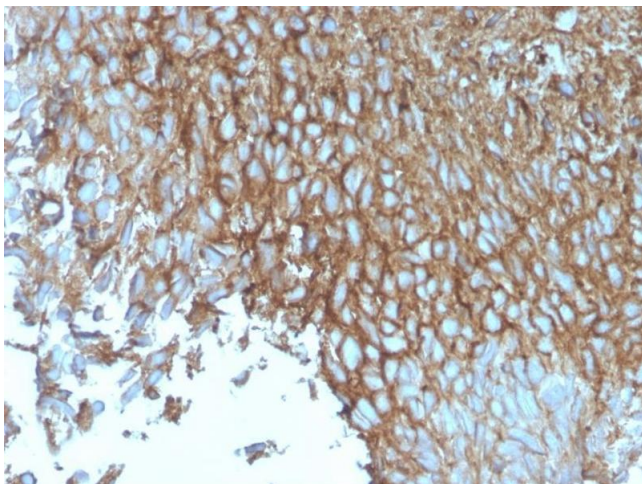
Expiry Date: 24 months

Images



SDS-PAGE

Image 1. SDS-PAGE Analysis Purified GLUT-1 Recombinant Mouse Monoclonal Antibody (rGLUT1/2476). Confirmation of Purity and Integrity of Antibody.



Immunohistochemistry

Image 2. Formalin-fixed, paraffin-embedded human Bladder stained with GLUT-1 Mouse Monoclonal Antibody (rGLUT1/2476).