

Datasheet for ABIN6940634

anti-CD43 antibody**6** Images[Go to Product page](#)

Overview

Quantity:	100 µg
Target:	CD43 (SPN)
Reactivity:	Human
Host:	Mouse
Clonality:	Monoclonal
Conjugate:	This CD43 antibody is un-conjugated
Application:	Flow Cytometry (FACS), Western Blotting (WB), Immunohistochemistry (IHC), Immunofluorescence (IF), Staining Methods (StM)

Product Details

Immunogen:	Myeloblastic KG1 cells
Clone:	DF-T1
Isotype:	IgG1 kappa
Specificity:	It recognizes a cell surface glycoprotein of 95/115/135 kDa (depending upon the extent of glycosylation), identified as CD43 [Workshop IV]. Epitope of MAb Bra7G is clearly different from that of MAb DF-T1, called b as opposed to a for DF-T1. 70-90 % of T-cell lymphomas and from 22-37 % of B-cell lymphomas express CD43. No reactivity has been observed with reactive B-cells. So a B-lineage population that co-expresses CD43 is highly likely to be a malignant lymphoma, especially a low-grade lymphoma, rather than a reactive B-cell population. When CD43 antibody is used in combination with anti-CD20, effective immunophenotyping of the lymphomas in formalin-fixed tissues can be obtained. Co-staining of a lymphoid infiltrate with anti-CD20 and anti-CD43 argues against a reactive process and favors a diagnosis of

Product Details

lymphoma.

Purification: Purified by Protein A/G

Target Details

Target: CD43 (SPN)

Alternative Name: SPN ([SPN Products](#))

Molecular Weight: 95, 115, or 135kDa

Gene ID: 6693

UniProt: [P16150](#)

Pathways: [Regulation of Leukocyte Mediated Immunity](#)

Application Details

Application Notes: Positive Control: PBMCs or K562 cells (FC). K562 cell lysate (WB). Paracortex in a tonsil or a reactive lymph node (IHC).

Known Application: Western Blot (1-2 µg/mL), Flow Cytometry (0.5-1 µg/million cells), Immunofluorescence (1-2 µg/mL), Immunohistochemistry (Formalin-fixed) (0.5-1 µg/mL for 30 minutes at RT),(Staining of formalin-fixed tissues requires boiling tissue sections in 10 mM citrate buffer, pH 6.0, for 10-20 min followed by cooling at RT for 20 minutes),Optimal dilution for a specific application should be determined.

Restrictions: For Research Use only

Handling

Concentration: 200 µg/mL

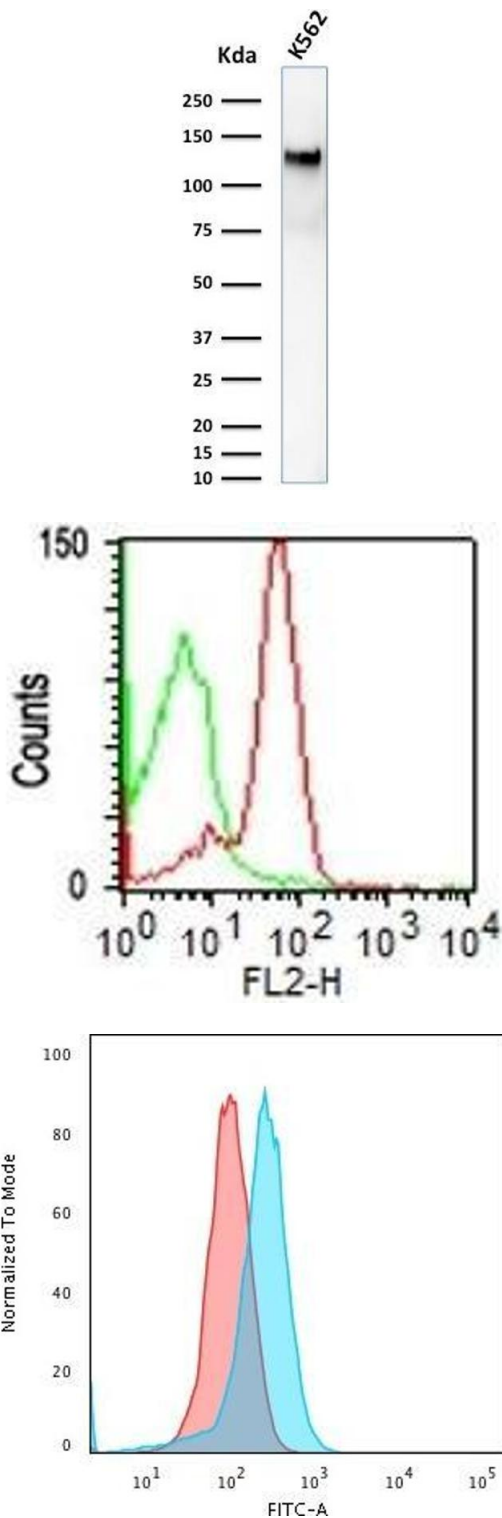
Buffer: 10 mM PBS with 0.05 % BSA & 0.05 % azide.

Preservative: Sodium azide

Precaution of Use: This product contains Sodium azide: a POISONOUS AND HAZARDOUS SUBSTANCE which should be handled by trained staff only.

Storage: 4 °C,-80 °C

Storage Comment: Antibody with azide - store at 2 to 8°C. Antibody without azide - store at -20 to -80°C. Antibody is stable for 24 months. Non-hazardous. No MSDS required.



Western Blotting

Image 1. Western Blot Analysis of K562 cell lysate using CD43 Mouse Monoclonal Antibody (DF-T1).

Flow Cytometry

Image 2. FACS Analysis of human PBMC using CD43 Mouse Monoclonal Antibody (DF-T1) (Red); Isotype Control (Green).

Flow Cytometry

Image 3. Flow Cytometric Analysis of PFA-fixed K562 cells using CD43 Mouse Monoclonal Antibody (DF-T1) followed by Goat anti-Mouse IgG-CF488 (Blue); Isotype Control (Red).

Please check the [product details page](#) for more images. Overall 6 images are available for ABIN6940634.