



[Go to Product page](#)

Datasheet for ABIN6940646

## Recombinant anti-SPTA1 antibody (AA 356-475)

### 4 Images

#### Overview

Quantity:	100 µg
Target:	SPTA1
Binding Specificity:	AA 356-475
Reactivity:	Human
Host:	Rabbit
Antibody Type:	Recombinant Antibody
Clonality:	Monoclonal
Conjugate:	This SPTA1 antibody is un-conjugated
Application:	Western Blotting (WB), Immunohistochemistry (IHC), ELISA, Coating (Coat), Staining Methods (StM)

#### Product Details

Immunogen:	Recombinant fragment of human SPTA (around aa356-475) (exact sequence is proprietary)
Clone:	SPTA1-2939R
Isotype:	IgG
Purification:	Purified by Protein A/G

#### Target Details

Target:	SPTA1
Alternative Name:	SPTA1 ( <a href="#">SPTA1 Products</a> )

## Target Details

---

Background:	Spectrin is an actin crosslinking and molecular scaffold protein that links the plasma membrane to the actin cytoskeleton, and functions in the determination of cell shape, arrangement of transmembrane proteins, and organization of organelles. Spectrins function as membrane organizers and stabilizers, composed of non-homologous ) are present in other somatic cells. The spectrin tetramers in erythrocytes act as barriers to lateral diffusion, but spectrin dimers seem to lack this function.
Molecular Weight:	240kDa
Gene ID:	6708
UniProt:	<a href="#">P02549</a>
Pathways:	<a href="#">Regulation of Actin Filament Polymerization</a>

## Application Details

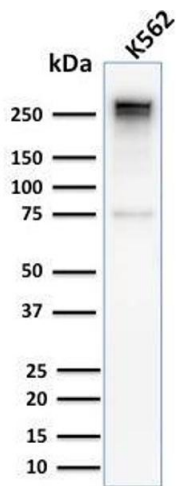
---

Application Notes:	Positive Control: K562, HeLa, Jurkat cells. Placenta or Tonsil. Known Application: ELISA (Use Ab at 2-4 µg/mL for coating) (Order Ab without BSA), Western Blot (1-2 µg/mL), Immunohistochemistry (Formalin-fixed) (1-2 µg/mL for 30 minutes at RT) (Staining of formalin-fixed tissues requires boiling tissue sections in 10 mM citrate buffer, pH 6.0, for 10-20 min followed by cooling at RT for 20 minutes)Optimal dilution for a specific application should be determined.
Restrictions:	For Research Use only

## Handling

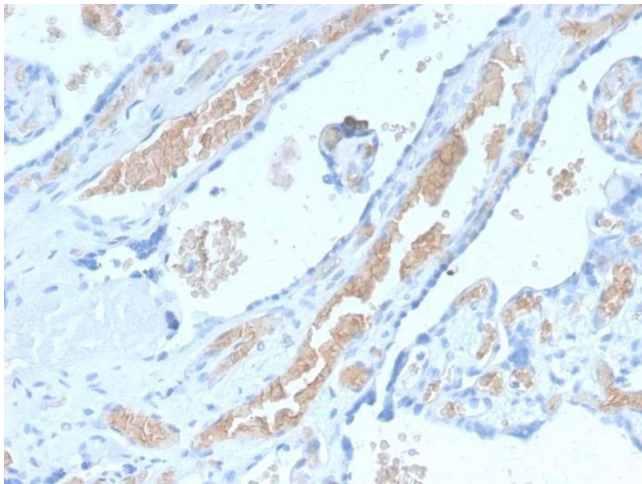
---

Concentration:	200 µg/mL
Buffer:	10 mM PBS with 0.05 % BSA & 0.05 % azide.
Preservative:	Sodium azide
Precaution of Use:	This product contains Sodium azide: a POISONOUS AND HAZARDOUS SUBSTANCE which should be handled by trained staff only.
Storage:	4 °C,-80 °C
Storage Comment:	Antibody with azide - store at 2 to 8°C. Antibody without azide - store at -20 to -80°C. Antibody is stable for 24 months. Non-hazardous. No MSDS required.
Expiry Date:	24 months



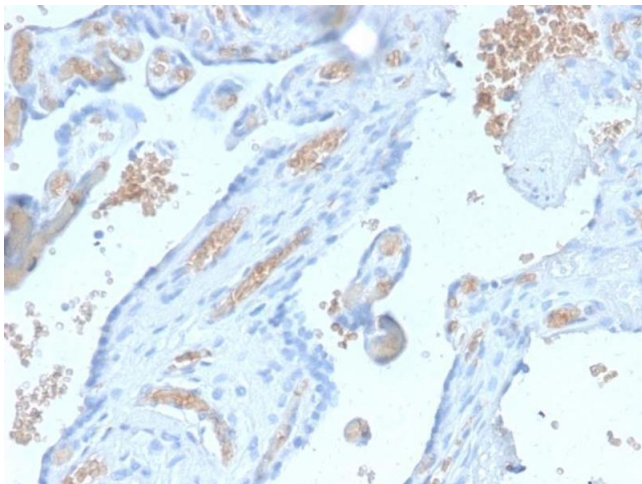
### Western Blotting

**Image 1.** Western Blot Analysis of Human K562 cell lysate using Spectrin alpha 1 Rabbit Recombinant Monoclonal Antibody (SPTA1/2939R).



### Immunohistochemistry

**Image 2.** Formalin-fixed, paraffin-embedded human Pancreas stained with Spectrin alpha 1 Rabbit Recombinant Monoclonal Antibody (SPTA1/2939R).



### Immunohistochemistry

**Image 3.** Formalin-fixed, paraffin-embedded human Pancreas stained with Spectrin alpha 1 Rabbit Recombinant Monoclonal Antibody (SPTA1/2939R).

Please check the [product details page](#) for more images. Overall 4 images are available for ABIN6940646.