

Datasheet for ABIN6940656

Recombinant anti-Spectrin, Beta, Non-erythrocytic 2 (SPTBN2) (AA 356-475) antibody[Go to Product page](#)

6 Images

Overview

Quantity:	100 µg
Target:	Spectrin, Beta, Non-erythrocytic 2 (SPTBN2)
Binding Specificity:	AA 356-475
Reactivity:	Human
Host:	Rabbit
Antibody Type:	Recombinant Antibody
Clonality:	Monoclonal
Conjugate:	Un-conjugated
Application:	Western Blotting (WB), Flow Cytometry (FACS), Immunohistochemistry (IHC), ELISA, Coating (Coat), Staining Methods (StM)

Product Details

Immunogen:	Recombinant human SPTBN2 fragment (aa356-475) (exact sequence is proprietary)
Clone:	SPTBN2-2894R
Isotype:	IgG
Purification:	Purified by Protein A/G

Target Details

Target:	Spectrin, Beta, Non-erythrocytic 2 (SPTBN2)
Alternative Name:	SPTBN2 (SPTBN2 Products)

Target Details

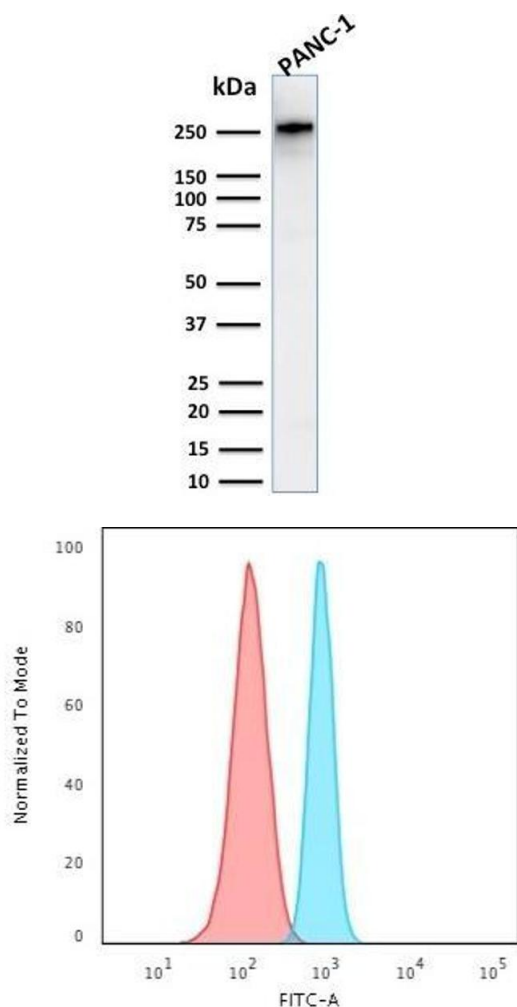
Background:	Spectrin is an actin binding protein that is a major component of the plasma membrane skeleton. Spectrins function as membrane organizers and stabilizers by forming dimers, tetramers and higher polymers. Vertebrate spectrins have two alpha-subunits (alpha-I/alpha-II) four beta-subunits (beta-I-beta-IV) and a beta-H subunit creating diversity and specialization of function. Spectrin III is highly expressed in brain, kidney, pancreas and liver, and at lower levels in lung and placenta. Spectrin beta 3 is primarily expressed in nervous tissues with highest expression levels in the cerebellum, where it is found in Purkinje cell soma and dendrites.
Molecular Weight:	246kDa
Gene ID:	6712
UniProt:	O15020
Pathways:	Regulation of Actin Filament Polymerization , Synaptic Vesicle Exocytosis

Application Details

Application Notes:	Positive Control: HeLa cells. Pancreas or Liver. Known Application: Flow Cytometry (1-2 µg/million cells), (ELISA (Use Ab at 2-4 µg/mL for coating) (Order Ab without BSA), Western Blot (0.5-1.0 µg/mL), Immunohistochemistry (Formalin-fixed) (0.5-1.0 µg/mL for 30 minutes at RT) (Staining of formalin-fixed tissues requires boiling tissue sections in 10 mM citrate buffer, pH 6.0, for 10-20 min followed by cooling at RT for 20 minutes) Optimal dilution for a specific application should be determined.
Restrictions:	For Research Use only

Handling

Concentration:	200 µg/mL
Buffer:	10 mM PBS with 0.05 % BSA & 0.05 % azide.
Preservative:	Sodium azide
Precaution of Use:	This product contains Sodium azide: a POISONOUS AND HAZARDOUS SUBSTANCE which should be handled by trained staff only.
Storage:	4 °C, -80 °C
Storage Comment:	Antibody with azide - store at 2 to 8°C. Antibody without azide - store at -20 to -80°C. Antibody is stable for 24 months. Non-hazardous. No MSDS required.
Expiry Date:	24 months

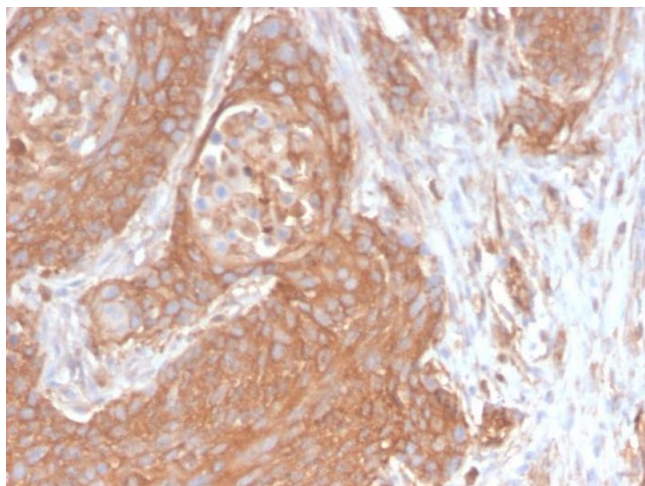


Western Blotting

Image 1. Western Blot Analysis of Human PANC-1 cell lysate using Spectrin beta III Rabbit Recombinant Monoclonal (SPTBN2/2894R).

Flow Cytometry

Image 2. Flow Cytometric Analysis of HeLa cells using Spectrin beta III Rabbit Recombinant Monoclonal (SPTBN2/2894R) followed by Goat anti-rabbit IgG-CF488 (Blue); Isotype Control (Red).



Immunohistochemistry

Image 3. Formalin-fixed, paraffin-embedded human Pancreatic Cancer stained with Spectrin beta III Rabbit Recombinant Monoclonal (SPTBN2/2894R).

Please check the [product details page](#) for more images. Overall 6 images are available for ABIN6940656.