

Datasheet for ABIN6940660

anti-SREBF2 antibody[Go to Product page](#)**1** Image

Overview

Quantity:	100 µg
Target:	SREBF2
Reactivity:	Human
Host:	Mouse
Clonality:	Monoclonal
Conjugate:	This SREBF2 antibody is un-conjugated
Application:	ELISA, Coating (Coat)

Product Details

Immunogen:	Recombinant full-length human SREBF2 protein
Clone:	SREBP2-1579
Isotype:	IgG1 kappa
Purification:	Purified by Protein A/G

Target Details

Target:	SREBF2
Alternative Name:	SREBF2 (SREBF2 Products)
Background:	The low density lipoprotein (LDL) receptor mediates the endocytic uptake of cholesterol-carrying lipoproteins, thereby controlling cholesterol levels in cells and plasma. Transcription of the LDL receptor gene is controlled by a ten base pair sequence in the 5' flanking region, designated sterol regulatory element 1 (SRE-1). When cellular sterol stores are depleted, the

Target Details

element is activated, the gene is transcribed and the cellular uptake of LDL increases. A set of SREbinding proteins (SREBPs) have been identified, including two basic helixloop-helix-leucine zipper (bHLH-zip) transcription factors, designated SREBP-1 and SREBP-2. SREBP-1 and SREBP-2 have been shown to have the same specificity for SRE-1 in vitro and to activate the transcription of reporter genes containing SRE-1 in the same way.

Molecular Weight: 68/125kDa

Gene ID: 6721

UniProt: [Q12772](#)

Pathways: [Regulation of Lipid Metabolism by PPARAlpha](#)

Application Details

Application Notes: Positive Control: Ubiquitous expression in adult and fetal tissues. Hep2 or HeLa cells.
Known Application: ELISA (For coating, order antibody without BSA), Optimal dilution for a specific application should be determined.

Restrictions: For Research Use only

Handling

Concentration: 200 µg/mL

Buffer: 10 mM PBS with 0.05 % BSA & 0.05 % azide.

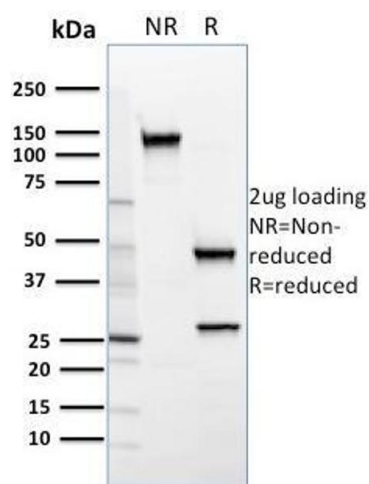
Preservative: Sodium azide

Precaution of Use: This product contains Sodium azide: a POISONOUS AND HAZARDOUS SUBSTANCE which should be handled by trained staff only.

Storage: 4 °C, -80 °C

Storage Comment: Antibody with azide - store at 2 to 8°C. Antibody without azide - store at -20 to -80°C. Antibody is stable for 24 months. Non-hazardous. No MSDS required.

Expiry Date: 24 months



SDS-PAGE

Image 1. SDS-PAGE Analysis Purified SREBP2 Mouse Monoclonal Antibody (SREBP2/1579). Confirmation of Purity and Integrity of Antibody.