

Datasheet for ABIN6940662
anti-BRCA1 antibody (AA 445-620)



[Go to Product page](#)

2 Images

Overview

Quantity:	100 µg
Target:	BRCA1
Binding Specificity:	AA 445-620
Reactivity:	Human
Host:	Mouse
Clonality:	Monoclonal
Conjugate:	This BRCA1 antibody is un-conjugated
Application:	ELISA, Coating (Coat)

Product Details

Immunogen:	Recombinant fragment (around aa 445-620) of human BRCA1 protein (exact sequence is proprietary)
Clone:	BRCA1-1472
Isotype:	IgG1 kappa
Purification:	Purified by Protein A/G

Target Details

Target:	BRCA1
Alternative Name:	BRCA1 (BRCA1 Products)
Background:	This gene encodes a nuclear phosphoprotein that plays a role in maintaining genomic stability,

Target Details

and it also acts as a tumor suppressor. The encoded protein combines with other tumor suppressors, DNA damage sensors, and signal transducers to form a large multi-subunit protein complex known as the BRCA1-associated genome surveillance complex (BASC). This gene product associates with RNA polymerase II, and through the C-terminal domain, also interacts with histone deacetylase complexes. This protein thus plays a role in transcription, DNA repair of double-stranded breaks, and recombination. Mutations in this gene are responsible for approximately 40 % of inherited breast cancers and more than 80 % of inherited breast and ovarian cancers. Alternative splicing plays a role in modulating the subcellular localization and physiological function of this gene.

Molecular Weight: 220kDa

Gene ID: 672

UniProt: [P38398](#)

Pathways: [Cell Division Cycle, DNA Damage Repair, Intracellular Steroid Hormone Receptor Signaling Pathway, Positive Regulation of Response to DNA Damage Stimulus](#)

Application Details

Application Notes: Positive Control: A431 or HeLa cells. Breast, Ovarian or Renal Cell Carcinoma.
Known Application: ELISA (For coating use Ab at 2-4 µg/mL, order Ab without BSA), Optimal dilution for a specific application should be determined.

Restrictions: For Research Use only

Handling

Concentration: 200 µg/mL

Buffer: 10 mM PBS with 0.05 % BSA & 0.05 % azide.

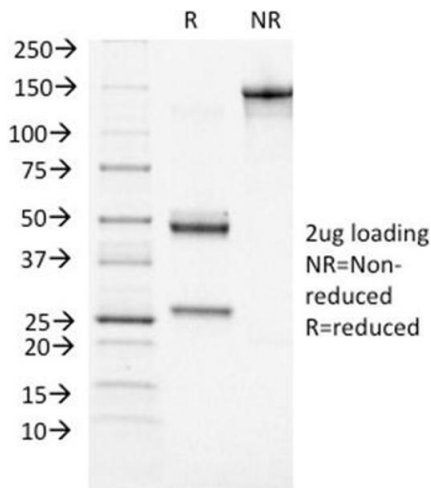
Preservative: Sodium azide

Precaution of Use: This product contains Sodium azide: a POISONOUS AND HAZARDOUS SUBSTANCE which should be handled by trained staff only.

Storage: 4 °C, -80 °C

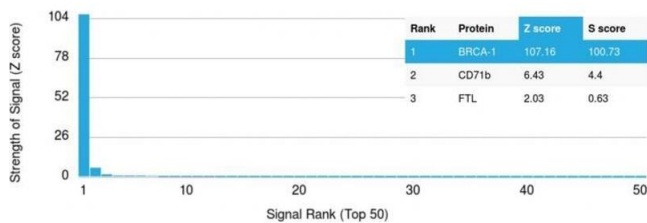
Storage Comment: Antibody with azide - store at 2 to 8°C. Antibody without azide - store at -20 to -80°C. Antibody is stable for 24 months. Non-hazardous. No MSDS required.

Expiry Date: 24 months



SDS-PAGE

Image 1. SDS-PAGE Analysis Purified BRCA1 Mouse Monoclonal Antibody (BRCA1/1472). Confirmation of Integrity and Purity of Antibody.



Protein Array

Image 2. Analysis of Protein Array containing more than 19,000 full-length human proteins using BRCA-1 Mouse Monoclonal Antibody (BRCA1/1472) Z- and S- Score: The Z-score represents the strength of a signal that a monoclonal antibody (Monoclonal Antibody) (in combination with a fluorescently-tagged anti-IgG secondary antibody) produces when binding to a particular protein on the HuProt™ array. Z-scores are described in units of standard deviations (SD's) above the mean value of all signals generated on that array. If targets on HuProt™ are arranged in descending order of the Z-score, the S-score is the difference (also in units of SD's) between the Z-score. S-score therefore represents the relative target specificity of a Monoclonal Antibody to its intended target. A Monoclonal Antibody is considered to specific to its intended target, if the Monoclonal Antibody has an S-score of at least 2.5. For example, if a Monoclonal Antibody binds to protein X with a Z-score of 43 and to protein Y with a Z-score of 14, then the S-score for the binding of that Monoclonal Antibody to protein X is equal to 29.