

Datasheet for ABIN6940673

anti-SULT1E1 antibody

4 Images

[Go to Product page](#)

Overview

Quantity:	100 µg
Target:	SULT1E1
Reactivity:	Human
Host:	Mouse
Clonality:	Monoclonal
Conjugate:	This SULT1E1 antibody is un-conjugated
Application:	Immunohistochemistry (IHC), Staining Methods (StM)

Product Details

Immunogen:	Recombinant full-length human SULT1E1 protein
Clone:	CPTC-SULT1E1-1
Isotype:	IgG2b kappa
Purification:	Purified by Protein A/G

Target Details

Target:	SULT1E1
Alternative Name:	SULT1E1 (SULT1E1 Products)
Background:	<p>The soluble sulfotransferases contribute to the elimination of xenobiotics, the activation of procarcinogens and the regulation of hormones by catalyzing the sulfate conjugation of these substances. SULT1E1, also known as STE, is a 294 amino acid member of the SULT1 family.</p> <p>Localized to the cytoplasm and expressed in intestine, liver and kidney, SULT1E1 exists as a</p>

Target Details

homodimer that is thought to control estrogen receptor (ER) levels by sulfurylating free estradiol. Defects in the gene encoding SULT1E1 are associated with an increased risk for endometrial cancer, suggesting a role for SULT1E1 in tumorigenesis.

Molecular Weight: 35kDa

Gene ID: 6783

UniProt: [P49888](#)

Pathways: [Steroid Hormone Biosynthesis](#)

Application Details

Application Notes: Positive Control: HEP G2, liver, intestine and kidney.
Known Application: Immunohistochemistry (Formalin-fixed) (0.5-1 µg/mL for 30 min at RT)(Staining of formalin-fixed tissues requires boiling tissue sections in 10 mM Citrate Buffer, pH 6.0, for 10-20 min followed by cooling at RT for 20 minutes)Optimal dilution for a specific application should be determined.

Restrictions: For Research Use only

Handling

Concentration: 200 µg/mL

Buffer: 10 mM PBS with 0.05 % BSA & 0.05 % azide.

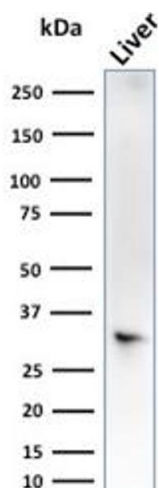
Preservative: Sodium azide

Precaution of Use: This product contains Sodium azide: a POISONOUS AND HAZARDOUS SUBSTANCE which should be handled by trained staff only.

Storage: 4 °C,-80 °C

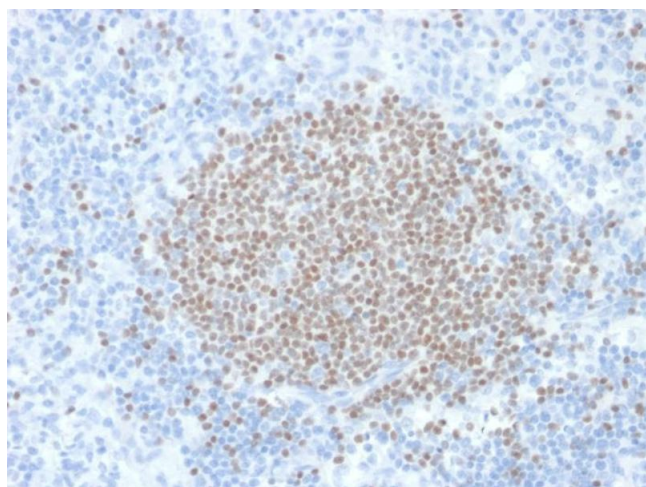
Storage Comment: Antibody with azide - store at 2 to 8°C. Antibody without azide - store at -20 to -80°C. Antibody is stable for 24 months. Non-hazardous. No MSDS required.

Expiry Date: 24 months



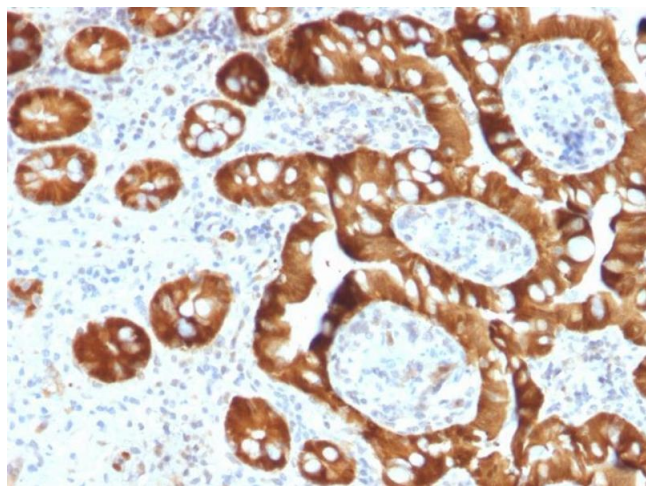
Western Blotting

Image 1. Western Blot Analysis of liver tissue lysate using SULT1E1 Mouse Monoclonal Antibody (CPTC-SULT1E1-1).



Immunohistochemistry

Image 2. Formalin-fixed, paraffin-embedded human Lymph Node stained with SULT1E1 Mouse Monoclonal Antibody (CPTC-SULT1E1-1).



Immunohistochemistry

Image 3. Formalin-fixed, paraffin-embedded human Small Intestine stained with SULT1E1 Mouse Monoclonal Antibody (CPTC-SULT1E1-1).

Please check the [product details page](#) for more images. Overall 4 images are available for ABIN6940673.