

Datasheet for ABIN6940747  
**anti-TLE1 antibody (AA 175-338)**[Go to Product page](#)

## 4 Images

## Overview

Quantity:	100 µg
Target:	TLE1
Binding Specificity:	AA 175-338
Reactivity:	Human
Host:	Mouse
Clonality:	Monoclonal
Conjugate:	This TLE1 antibody is un-conjugated
Application:	Western Blotting (WB), Immunohistochemistry (IHC), Staining Methods (StM)

## Product Details

Immunogen:	Recombinant human TLE1 fragment (aa 175-338) (exact sequence is proprietary)
Clone:	TLE1-2051
Isotype:	IgG2a kappa
Purification:	Purified by Protein A/G

## Target Details

Target:	TLE1
Alternative Name:	TLE1 ( <a href="#">TLE1 Products</a> )
Background:	Key players in the Notch pathway are the TLE genes, which are human homologs of the Drosophila groucho gene. Groucho is a transcriptional repressor that plays a key role in

## Target Details

neurogenesis, segmentation and sex determination. Transducin-like enhancer protein1 (TLE1) is a protein that is encoded by the TLE1 gene and is involved in control of hematopoiesis, neuronal, and terminal epithelial differentiation. Positive immunohistochemical nuclear staining with anti-TLE-1 has been shown to be a useful addition to an IHC panel when differentiating synovial sarcoma from other soft tissue malignancies.

Molecular Weight: 83kDa

Gene ID: 7088

UniProt: [Q04724](#)

Pathways: [WNT Signaling](#), [SARS-CoV-2 Protein Interactome](#)

## Application Details

Application Notes: Positive Control: HeLa, HepG2 or Jurkat cells. Endometrium Carcinoma or Sarcomas.  
Known Application: Western Blot (0.5-1 µg/mL), Immunohistochemistry (Formalin-fixed) (1-2 µg/mL for 30 minutes at RT)(Staining of formalin-fixed tissues requires boiling tissue sections in 10 mM Citrate Buffer, pH 6.0, for 10-20 min followed by cooling at RT for 20 minutes)Optimal dilution for a specific application should be determined.

Restrictions: For Research Use only

## Handling

Concentration: 200 µg/mL

Buffer: 10 mM PBS with 0.05 % BSA & 0.05 % azide.

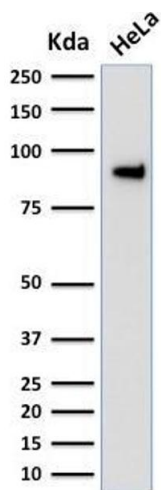
Preservative: Sodium azide

Precaution of Use: This product contains Sodium azide: a POISONOUS AND HAZARDOUS SUBSTANCE which should be handled by trained staff only.

Storage: 4 °C, -80 °C

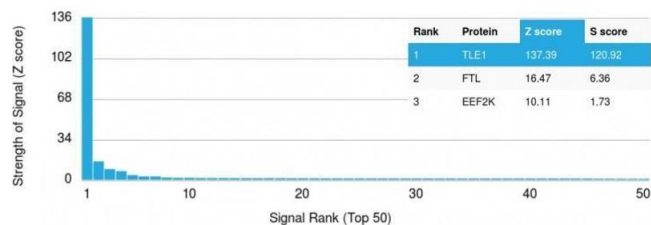
Storage Comment: Antibody with azide - store at 2 to 8°C. Antibody without azide - store at -20 to -80°C. Antibody is stable for 24 months. Non-hazardous. No MSDS required.

Expiry Date: 24 months



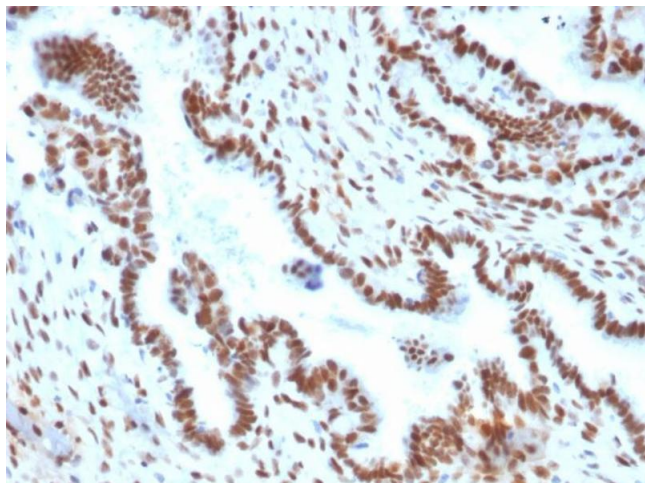
Western Blotting

**Image 1.** Western Blot Analysis of human HeLa cell lysate using TLE1 Mouse Monoclonal Antibody (TLE1/2051).



Protein Array

**Image 2.** Analysis of Protein Array containing more than 19,000 full-length human proteins using TLE1 Mouse Monoclonal Antibody (TLE1/2051). Z- and S- Score: The Z-score represents the strength of a signal that a monoclonal antibody (MAb) (in combination with a fluorescently-tagged anti-IgG secondary antibody) produces when binding to a particular protein on the HuProtTM array. Z-scores are described in units of standard deviations (SD's) above the mean value of all signals generated on that array. If targets on HuProtTM are arranged in descending order of the Z-score, the S-score is the difference (also in units of SD's) between the Z-score. S-score therefore represents the relative target specificity of a MAb to its intended target. A MAb is considered to specific to its intended target, if the MAb has an S-score of at least 2.5. For example, if a MAb binds to protein X with a Z-score of 43 and to protein Y with a Z-score of 14, then the S-score for the binding of that MAb to protein X is equal to 29.



#### Immunohistochemistry

**Image 3.** Formalin-fixed, paraffin-embedded human Endometrial Carcinoma stained with TLE1 Mouse Monoclonal Antibody (TLE1/2051).

Please check the [product details page](#) for more images. Overall 4 images are available for ABIN6940747.