

Datasheet for ABIN6940750

Recombinant anti-TLE1 antibody (AA 175-338)[Go to Product page](#)**2** Images

Overview

Quantity:	100 µg
Target:	TLE1
Binding Specificity:	AA 175-338
Reactivity:	Human
Host:	Rabbit
Antibody Type:	Recombinant Antibody
Clonality:	Monoclonal
Conjugate:	This TLE1 antibody is un-conjugated
Application:	Immunohistochemistry (IHC), Staining Methods (StM)

Product Details

Immunogen:	Recombinant human TLE1 fragment (aa 175-338) (exact sequence is proprietary)
Clone:	TLE1-2946R
Isotype:	IgG
Purification:	Purified by Protein A/G

Target Details

Target:	TLE1
Alternative Name:	TLE1 (TLE1 Products)
Background:	Key players in the Notch pathway are the TLE genes, which are human homologs of the

Target Details

Drosophila groucho gene. Groucho is a transcriptional repressor that plays a key role in neurogenesis, segmentation and sex determination. Transducin-like enhancer protein1 (TLE1) is a protein that is encoded by the TLE1 gene and is involved in control of hematopoiesis, neuronal, and terminal epithelial differentiation. Positive immunohistochemical nuclear staining with anti-TLE-1 has been shown to be a useful addition to an IHC panel when differentiating synovial sarcoma from other soft tissue malignancies.

Molecular Weight: 83kDa

Gene ID: 7088

UniProt: [Q04724](#)

Pathways: [WNT Signaling](#), [SARS-CoV-2 Protein Interactome](#)

Application Details

Application Notes: Positive Control: HeLa, HepG2 or Jurkat cells. Endometrium Carcinoma or Sarcomas.
Known Application: Immunohistochemistry (Formalin-fixed) (1-2 µg/mL for 30 minutes at RT)(Staining of formalin-fixed tissues requires boiling tissue sections in 10 mM Citrate Buffer, pH 6.0, for 10-20 min followed by cooling at RT for 20 minutes)Optimal dilution for a specific application should be determined.

Restrictions: For Research Use only

Handling

Concentration: 200 µg/mL

Buffer: 10 mM PBS with 0.05 % BSA & 0.05 % azide.

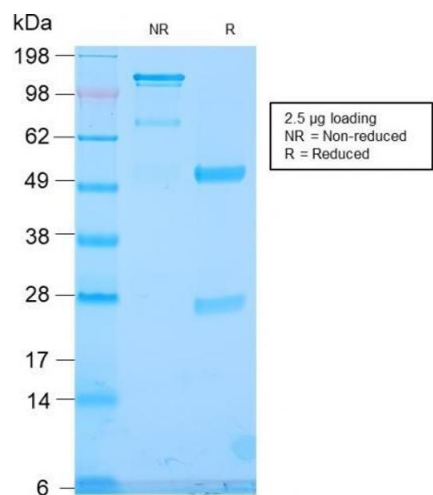
Preservative: Sodium azide

Precaution of Use: This product contains Sodium azide: a POISONOUS AND HAZARDOUS SUBSTANCE which should be handled by trained staff only.

Storage: 4 °C, -80 °C

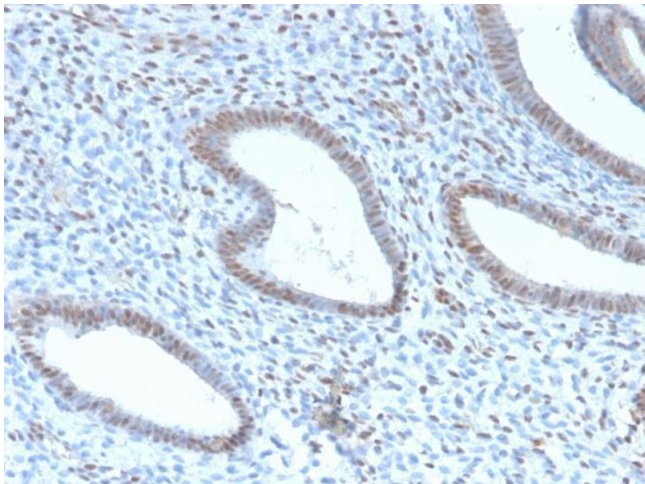
Storage Comment: Antibody with azide - store at 2 to 8°C. Antibody without azide - store at -20 to -80°C. Antibody is stable for 24 months. Non-hazardous. No MSDS required.

Expiry Date: 24 months



SDS-PAGE

Image 1. SDS-PAGE Analysis Purified TLE1 Rabbit Recombinant Monoclonal Antibody (TLE1/2946R). Confirmation of Integrity and Purity of Antibody.



Immunohistochemistry

Image 2. Formalin-fixed, paraffin-embedded human Endometrial Carcinoma stained with TLE1 Rabbit Recombinant Monoclonal Antibody (TLE1/2946R).