

Datasheet for ABIN6940808

anti-C4A antibody

4 Images

[Go to Product page](#)

Overview

Quantity:	100 µg
Target:	C4A (C4a)
Reactivity:	Human
Host:	Mouse
Clonality:	Monoclonal
Conjugate:	This C4A antibody is un-conjugated
Application:	Immunohistochemistry (IHC), ELISA, Coating (Coat), Staining Methods (StM)

Product Details

Immunogen:	Recombinant full-length human Complement 4d protein
Clone:	C4D204
Isotype:	IgG1 kappa
Specificity:	<p>This MAb is specific to Complement 4d (C4d) and reacts with the secreted as well as cell-bound C4d. C4d is a degradation product of the activated complement factor C4b. Complement 4b is typically activated by binding of Abs to specific target molecules. Following activation and degradation of the C4 Molecule, thio-ester groups are exposed, which allow transient, covalent binding of the degradation product Complement 4d to endothelial cell surfaces and extracellular matrix components of vascular basement membranes near the sites of C4 activation. The presence of C4d in peritubular capillaries is a key indicator for acute humoral (i.e. antibody-mediated) rejection of kidney, heart, pancreas and lung allografts. As an established marker of antibody-mediated acute renal allograft rejection and its proclivity for endothelium, this component can be detected in peritubular capillaries in chronic renal allograft</p>

Product Details

rejection as well as hyperacute rejection, acute vascular rejection, acute cellular rejection, and borderline rejection. It has been shown to be a significant predictor of transplant kidney graft survival. Anti-C4d, combined with anti-C3d, can be utilized as a tool for diagnosis of allograft rejection that may warrant a prompt and aggressive anti-rejection treatment.

Purification: Purified by Protein A/G

Target Details

Target: C4A (C4a)

Alternative Name: C4A ([C4a Products](#))

Molecular Weight: 192kDa (predicted)

Gene ID: 720, 721

Pathways: [Complement System](#)

Application Details

Application Notes: Positive Control: Rejected Renal Transplant Tissue.
Known Application: ELISA (For coating use Ab at 1-2 µg/mL order Ab without BSA),
Immunohistochemistry (Formalin-fixed) (1:200-1:400 for 30 minutes at RT)(Staining of formalin-fixed tissues requires boiling tissue sections in 1 mM EDTA, pH 7.5-8.5, for 10-20 min followed by cooling at RT for 20 minutes)Optimal dilution for a specific application should be determined.

Restrictions: For Research Use only

Handling

Concentration: 200 µg/mL

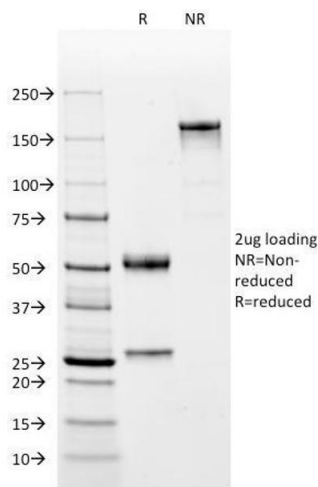
Buffer: 10 mM PBS with 0.05 % BSA & 0.05 % azide.

Preservative: Sodium azide

Precaution of Use: This product contains Sodium azide: a POISONOUS AND HAZARDOUS SUBSTANCE which should be handled by trained staff only.

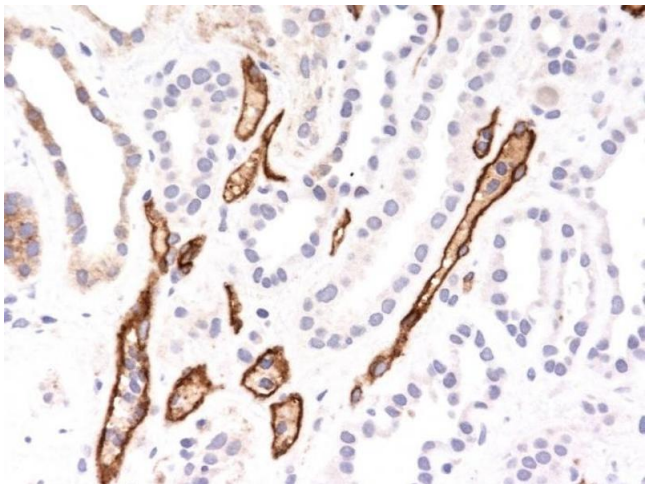
Storage: 4 °C,-80 °C

Storage Comment: Antibody with azide - store at 2 to 8°C. Antibody without azide - store at -20 to -80°C. Antibody is stable for 24 months. Non-hazardous. No MSDS required.



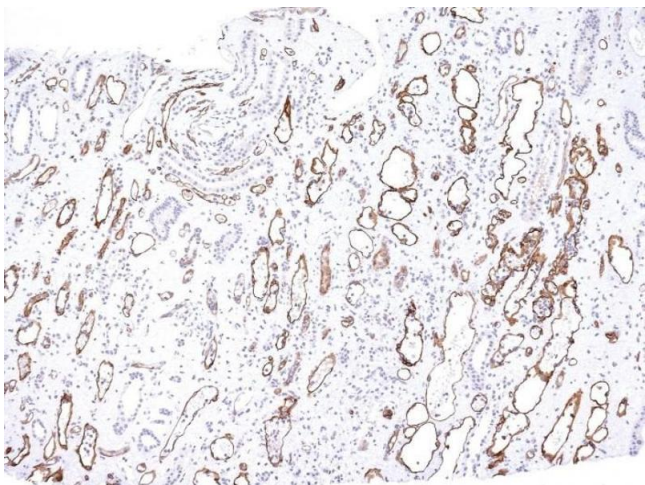
SDS-PAGE

Image 1. SDS-PAGE Analysis Purified Complement 4d Mouse Monoclonal Antibody (C4D204). Confirmation of Integrity and Purity of Antibody.



Immunohistochemistry

Image 2. Formalin-fixed, paraffin-embedded human Hepatocellular Carcinoma stained with Complement 4d Mouse Monoclonal Antibody (C4D204).



Immunohistochemistry

Image 3. Formalin-fixed, paraffin-embedded human Kidney Transplant stained with Complement 4d Mouse Monoclonal Antibody (C4D204).

Please check the [product details page](#) for more images. Overall 4 images are available for ABIN6940808.