

Datasheet for ABIN6940877

anti-Ezrin antibody

5 Images

[Go to Product page](#)

Overview

Quantity:	100 µg
Target:	Ezrin (EZR)
Reactivity:	Human
Host:	Mouse
Clonality:	Monoclonal
Conjugate:	This Ezrin antibody is un-conjugated
Application:	Western Blotting (WB), Immunohistochemistry (IHC), Staining Methods (StM)

Product Details

Immunogen:	Recombinant human full-length Ezrin protein
Clone:	CPTC-Ezrin-1
Isotype:	IgG2b kappa
Purification:	Purified by Protein A/G

Target Details

Target:	Ezrin (EZR)
Alternative Name:	Ezrin (EZR Products)
Background:	Ezrin, Moesin and Radixin belong to a family of highly homologous actin-associated proteins that are localized just beneath the plasma membrane. The proteins are believed to be involved in the mediation of interactions between cytoskeletal and membrane proteins. Ezrin serves as a major cytoplasmic substrate of various protein-tyrosine kinases, including the epidermal

Target Details

growth factor receptor. Ezrin has also been identified as a cAMP-dependent protein kinase (A-kinase) anchoring protein and designated AKAP78. Moesin and Radixin share over 70 % homology with Ezrin and are co-expressed within various cell types. Despite the high degree of homology, the three proteins exhibit a distinct receptor-specific pattern of phosphorylation. Overexpression of Ezrin predicts the poor prognosis of gastric adenocarcinoma.

Molecular Weight: 87kDa

Gene ID: 7430

UniProt: [P15311](#)

Pathways: [Maintenance of Protein Location](#)

Application Details

Application Notes: Positive Control: SKBr3, HeLa, HEK293, MCF-7, Jurkat, A431, MCF-7. Cerebral cortex and hippocampus.

Known Application: Western Blot (1-2 µg/mL), Immunohistochemistry (Formalin-fixed) (1-2 µg/mL for 30 min at RT)(Staining of formalin-fixed tissues requires boiling tissue sections in 10 mM Citrate Buffer, pH 6.0, for 10-20 min followed by cooling at RT for 20 minutes)Optimal dilution for a specific application should be determined.

Restrictions: For Research Use only

Handling

Concentration: 200 µg/mL

Buffer: 10 mM PBS with 0.05 % BSA & 0.05 % azide.

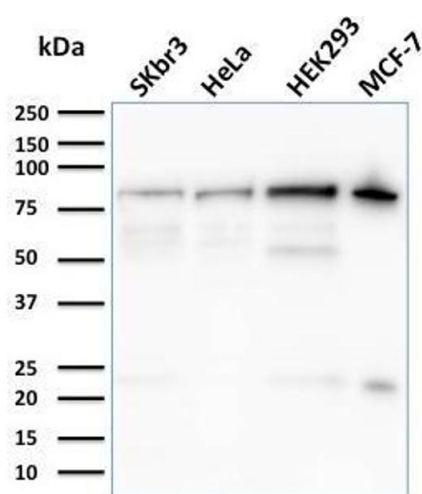
Preservative: Sodium azide

Precaution of Use: This product contains Sodium azide: a POISONOUS AND HAZARDOUS SUBSTANCE which should be handled by trained staff only.

Storage: 4 °C, -80 °C

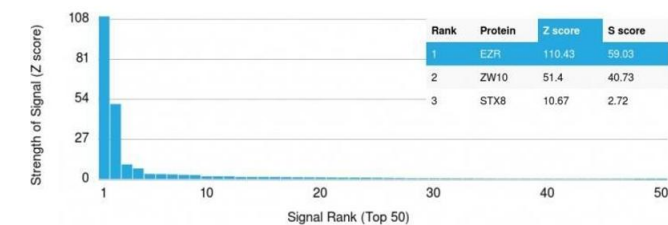
Storage Comment: Antibody with azide - store at 2 to 8°C. Antibody without azide - store at -20 to -80°C. Antibody is stable for 24 months. Non-hazardous. No MSDS required.

Expiry Date: 24 months



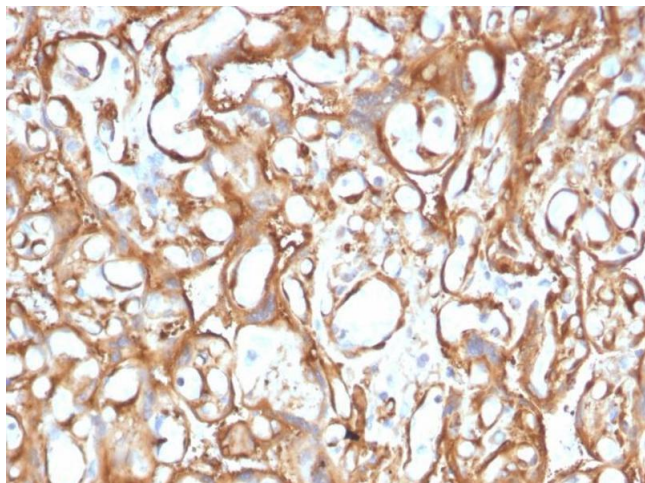
Western Blotting

Image 1. Western Blot Analysis of SKBr-3, HeLa, HEK293, MCF-7 cell lysates using Ezrin Mouse Monoclonal Antibody (CPTC-Ezrin-1).



Protein Array

Image 2. Analysis of Protein Array containing more than 19,000 full-length human proteins using Ezrin / p81 Mouse Monoclonal Antibody (CPTC-Ezrin-1). Z- and S- Score: The Z-score represents the strength of a signal that a monoclonal antibody (MAB) (in combination with a fluorescently-tagged anti-IgG secondary antibody) produces when binding to a particular protein on the HuProtTM array. Z-scores are described in units of standard deviations (SD's) above the mean value of all signals generated on that array. If targets on HuProtTM are arranged in descending order of the Z-score, the S-score is the difference (also in units of SD's) between the Z-score. S-score therefore represents the relative target specificity of a MAB to its intended target. A MAB is considered to specific to its intended target, if the MAB has an S-score of at least 2.5. For example, if a MAB binds to protein X with a Z-score of 43 and to protein Y with a Z-score of 14, then the S-score for the binding of that MAB to protein X is equal to 29.



Immunohistochemistry

Image 3. Formalin-fixed, paraffin-embedded human Placenta stained with Ezrin Mouse Monoclonal Antibody (CPTC-Ezrin-1).

Please check the [product details page](#) for more images. Overall 5 images are available for ABIN6940877.