

Datasheet for ABIN6940908

**anti-YWHAE antibody**

## 4 Images

[Go to Product page](#)

## Overview

Quantity:	100 µg
Target:	YWHAE
Reactivity:	Human
Host:	Mouse
Clonality:	Monoclonal
Conjugate:	This YWHAE antibody is un-conjugated
Application:	Western Blotting (WB), Immunohistochemistry (IHC), Staining Methods (StM)

## Product Details

Immunogen:	Recombinant human full-length YWHAE protein
Clone:	CPTC-YWHAE-1
Isotype:	IgG2a kappa
Purification:	Purified by Protein A/G

## Target Details

Target:	YWHAE
Alternative Name:	YWHAE ( <a href="#">YWHAE Products</a> )
Background:	Adapter protein implicated in the regulation of a large spectrum of both general and specialized signaling pathway. Binds to a large number of partners, usually by recognition of a phosphoserine or phosphothreonine motif. Binding generally results in the modulation of the activity of the binding partner. It interacts with CDC25 phosphatases, RAF1 and IRS1 proteins,

## Target Details

suggesting its role in diverse biochemical activities related to signal transduction, such as cell division and regulation of insulin sensitivity. It has also been implicated in the pathogenesis of small cell lung cancer. The YWHAE gene which encodes 14-3-3E has also been identified as a possible susceptibility gene for schizophrenia.

Molecular Weight: 29.4kDa

Gene ID: 7531

UniProt: [P62268](#)

Pathways: [Neurotrophin Signaling Pathway](#), [Myometrial Relaxation and Contraction](#), [M Phase](#)

## Application Details

Application Notes: Positive Control: HEK-293 or A-431 cell lines.  
Known Application: Western Blot (1-2 µg/mL), Immunohistochemistry (Formalin-fixed) (0.5-1 µg/mL for 30 min at RT),(Staining of formalin-fixed tissues requires boiling tissue sections in 10 mM Citrate Buffer, pH 6.0, for 10-20 min followed by cooling at RT for 20 minutes),Optimal dilution for a specific application should be determined.

Restrictions: For Research Use only

## Handling

Concentration: 200 µg/mL

Buffer: 10 mM PBS with 0.05 % BSA & 0.05 % azide.

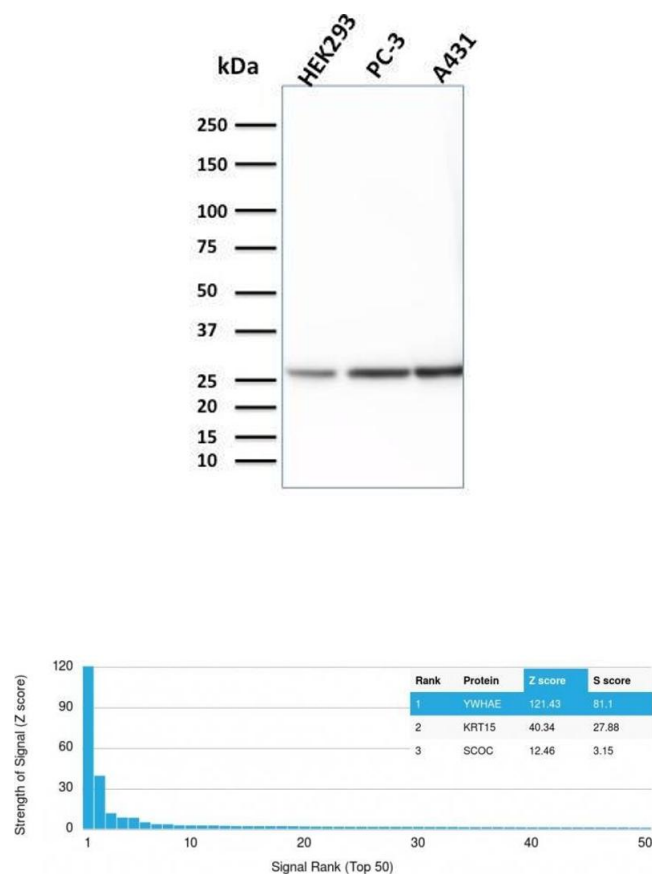
Preservative: Sodium azide

Precaution of Use: This product contains Sodium azide: a POISONOUS AND HAZARDOUS SUBSTANCE which should be handled by trained staff only.

Storage: 4 °C,-80 °C

Storage Comment: Antibody with azide - store at 2 to 8°C. Antibody without azide - store at -20 to -80°C. Antibody is stable for 24 months. Non-hazardous. No MSDS required.

Expiry Date: 24 months

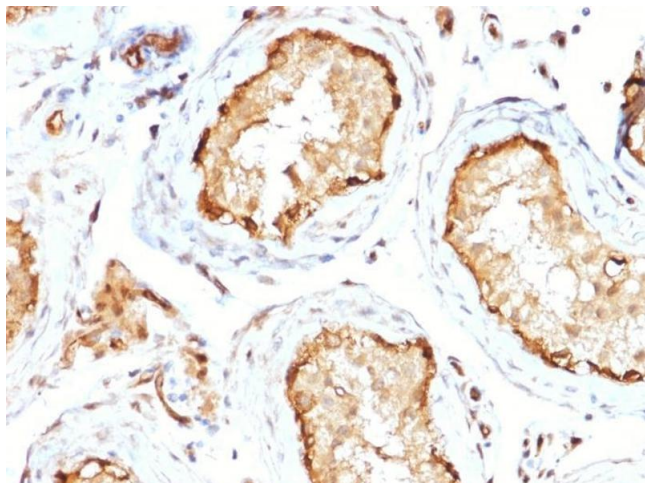


Western Blotting

**Image 1.** Western Blot Analysis of HEK293, PC-3 and A431 cell lysates using 14-3-3E Mouse Monoclonal Antibody (CPTC-YWHAE-1).

Protein Array

**Image 2.** Analysis of Protein Array containing more than 19,000 full-length human proteins using 14-3-3E Mouse Monoclonal Antibody (CPTC-YWHAE-1). Z- and S- Score: The Z-score represents the strength of a signal that a monoclonal antibody (MAB) (in combination with a fluorescently-tagged anti-IgG secondary antibody) produces when binding to a particular protein on the HuProt™ array. Z-scores are described in units of standard deviations (SD's) above the mean value of all signals generated on that array. If targets on HuProt™ are arranged in descending order of the Z-score, the S-score is the difference (also in units of SD's) between the Z-score. S-score therefore represents the relative target specificity of a MAB to its intended target. A MAB is considered to specific to its intended target, if the MAB has an S-score of at least 2.5. For example, if a MAB binds to protein X with a Z-score of 43 and to protein Y with a Z-score of 14, then the S-score for the binding of that MAB to protein X is equal to 29.



#### Immunohistochemistry

**Image 3.** Formalin-fixed, paraffin-embedded human Testis stained with 14-3-3E Mouse Monoclonal Antibody (CPTC-YWHAE-1).

Please check the [product details page](#) for more images. Overall 4 images are available for ABIN6940908.