

Datasheet for ABIN6940922

## Recombinant anti-CA9 antibody



[Go to Product page](#)

### 2 Images

#### Overview

Quantity:	100 µg
Target:	CA9
Reactivity:	Human, Horse
Host:	Rabbit
Antibody Type:	Recombinant Antibody
Clonality:	Monoclonal
Conjugate:	This CA9 antibody is un-conjugated
Application:	Immunohistochemistry (IHC), Staining Methods (StM)

#### Product Details

Immunogen:	Recombinant full-length human CA9 protein
Clone:	CA9-2993R
Isotype:	IgG
Specificity:	Recognizes a glycoprotein of ~200 kDa, identified as carbonic anhydrase IX (CAIX/gp200). Its epitope resides in the carbohydrate domain of gp200. It shows no significant cross-reactivity with other carbohydrate determinants, such as the Lewis blood group antigens, epithelial membrane antigen, HMFG, and AB blood group antigens. In normal kidney, gp200 is localized along the brush border of the pars convoluta and pars recta segments of the proximal tubule, as well as focally along the luminal surface of Bowman's capsule adjoining the outgoing proximal tubule. Reportedly, gp200 is expressed by 93 % of primary and 84 % of metastatic renal cell carcinomas. This MAb may be useful in the investigations of carcinomas of proximal

## Product Details

nephrogenic differentiation especially those showing tubular differentiation.

Purification: Purified by Protein A/G

## Target Details

Target: CA9

Alternative Name: CA9 ([CA9 Products](#))

Molecular Weight: 55kDa

Gene ID: 768

UniProt: [Q16790](#)

## Application Details

Application Notes: Positive Control: Normal kidney or renal cell carcinoma (IHC).  
Known Application: Immunohistochemistry (Formalin-fixed) (0.5-1 µg/mL for 30 minutes at RT)(Staining of formalin-fixed tissues requires boiling tissue sections in 10 mM Citrate Buffer, pH 6.0, for 10-20 min followed by cooling at RT for 20 minutes)Optimal dilution for a specific application should be determined.

Restrictions: For Research Use only

## Handling

Concentration: 200 µg/mL

Buffer: 10 mM PBS with 0.05 % BSA & 0.05 % azide.

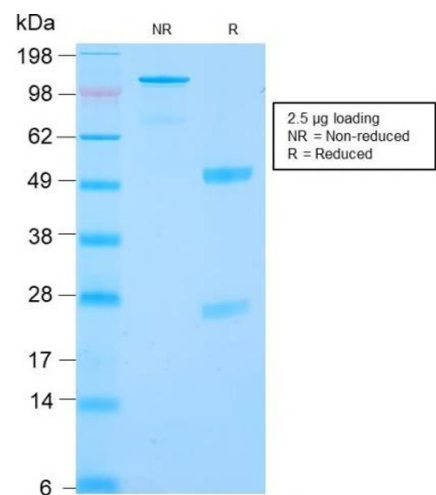
Preservative: Sodium azide

Precaution of Use: This product contains Sodium azide: a POISONOUS AND HAZARDOUS SUBSTANCE which should be handled by trained staff only.

Storage: 4 °C,-80 °C

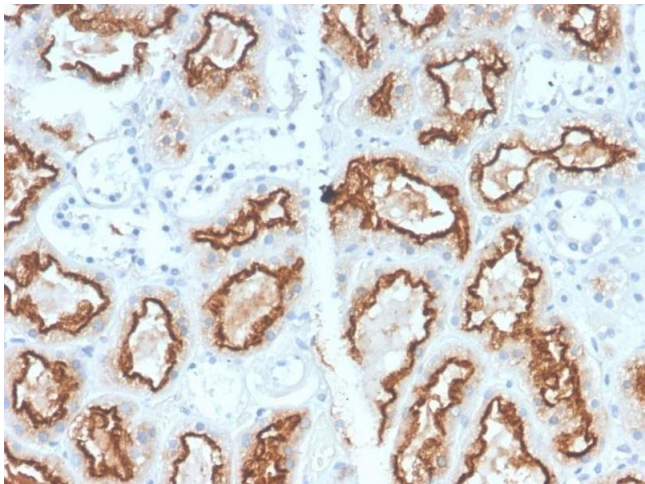
Storage Comment: Antibody with azide - store at 2 to 8°C. Antibody without azide - store at -20 to -80°C. Antibody is stable for 24 months. Non-hazardous. No MSDS required.

Expiry Date: 24 months



SDS-PAGE

**Image 1.** SDS-PAGE Analysis Purified RCC Rabbit Recombinant Monoclonal Antibody (CA9/2993R). Confirmation of Integrity and Purity of Antibody.



Immunohistochemistry

**Image 2.** Formalin-fixed, paraffin-embedded human Renal Cell Carcinoma stained with RCC Rabbit Recombinant Monoclonal Antibody (CA9/2993R).