

Datasheet for ABIN6940924  
**anti-PAX8 antibody (AA 60-261)**

## 6 Images

[Go to Product page](#)

## Overview

Quantity:	100 µg
Target:	PAX8
Binding Specificity:	AA 60-261
Reactivity:	Human
Host:	Mouse
Clonality:	Monoclonal
Conjugate:	This PAX8 antibody is un-conjugated
Application:	Western Blotting (WB), Immunohistochemistry (IHC), Flow Cytometry (FACS), Immunofluorescence (IF), Staining Methods (StM)

## Product Details

Immunogen:	Recombinant fragment (around aa 60-261) of human PAX8 protein (exact sequence is proprietary)
Clone:	PAX8-1492
Isotype:	IgG2b kappa
Specificity:	Recognizes a protein of 62 kDa, identified as PAX8. It is a member of the paired box (PAX) family of transcription factors. This nuclear protein is involved in thyroid follicular cell development and expression of thyroid-specific genes. Mutations in this gene have been associated with thyroid dysgenesis, thyroid follicular carcinomas, and atypical thyroid adenomas. PAX-8 is expressed in the thyroid (and associated carcinomas), non-ciliated mucosal cells of the fallopian tubes, and simple ovarian inclusion cysts, but not normal ovarian

## Product Details

surface epithelial cells. PAX-8 is expressed in a high percentage of ovarian serous, endometrioid, and clear cell carcinomas, but only rarely in primary ovarian mucinous adenocarcinomas. PAX-8 expression is reported in renal tubules as well as renal cell carcinoma, nephroblastoma, and seminoma. PAX-8 antibody may be used as an additional immunohistochemical marker for renal epithelial tumors.

Purification: Purified by Protein A/G

## Target Details

Target: PAX8

Alternative Name: PAX8 ([PAX8 Products](#))

Molecular Weight: 62kDa

Gene ID: 7849

UniProt: [Q06710](#)

Pathways: [Thyroid Hormone Synthesis](#), [Regulation of Hormone Metabolic Process](#), [Stem Cell Maintenance](#), [Tube Formation](#)

## Application Details

Application Notes: Positive Control: Raji cells. Renal Cell Carcinoma (RCC).  
Known Application: Flow Cytometry (0.5-1 µg/million cells), Immunofluorescence (1-2 µg/mL), Western Blot (0.5-1 µg/mL), Immunohistochemistry (Formalin-fixed) (1-2 µg/mL for 30 minutes at RT)(Staining of formalin-fixed tissues requires boiling tissue sections in 10 mM Tris buffer with 1 mM EDTA, pH 9.0, for 10-20 min followed by cooling at RT for 20 minutes)Optimal dilution for a specific application should be determined.

Restrictions: For Research Use only

## Handling

Concentration: 200 µg/mL

Buffer: 10 mM PBS with 0.05 % BSA & 0.05 % azide.

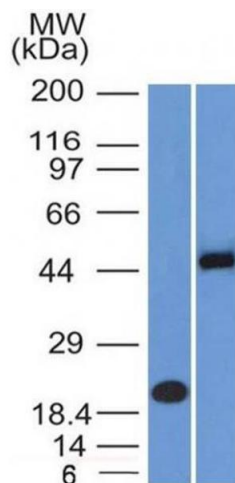
Preservative: Sodium azide

Precaution of Use: This product contains Sodium azide: a POISONOUS AND HAZARDOUS SUBSTANCE which should be handled by trained staff only.

Handling

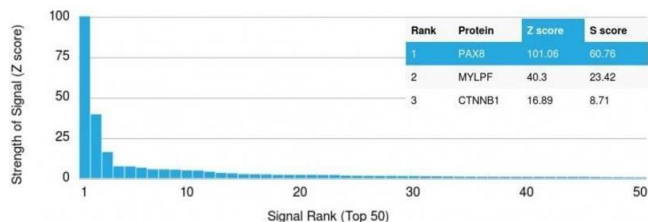
Storage:	4 °C,-80 °C
Storage Comment:	Antibody with azide - store at 2 to 8°C. Antibody without azide - store at -20 to -80°C. Antibody is stable for 24 months. Non-hazardous. No MSDS required.
Expiry Date:	24 months

Images



Western Blotting

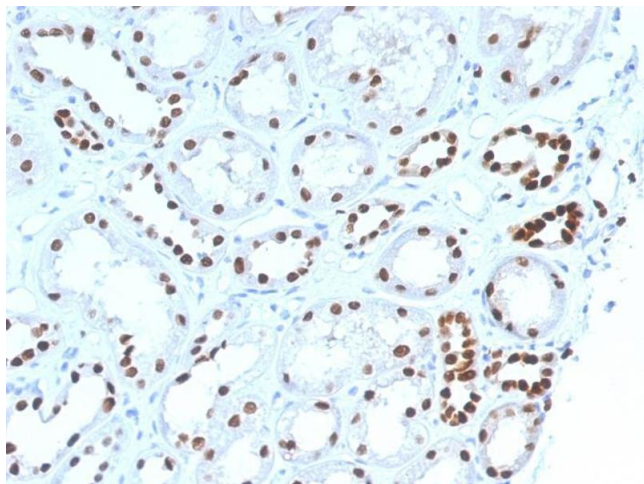
**Image 1.** Western Blot Analysis (A) Recombinant Protein (B) Raji cell lysate Using PAX8 Mouse Monoclonal Antibody (PAX8/1492).



Protein Array

**Image 2.** Analysis of Protein Array containing >19,000 full-length human proteins using PAX8 Mouse Monoclonal Antibody (PAX8/1492) Z- and S- Score: The Z-score represents the strength of a signal that a monoclonal antibody (MAb) (in combination with a fluorescently-tagged anti-IgG secondary antibody) produces when binding to a particular protein on the HuProt™ array. Z-scores are described in units of standard deviations (SD's) above the mean value of all signals generated on that array. If targets on HuProt™ are arranged in descending order of the Z-score, the S-score is the difference (also in units of SD's) between the Z-score. S-score therefore represents the relative target specificity of a MAb to its intended target. A MAb is considered to specific to its intended target, if the MAb has an S-score of at least 2.5. For example, if a MAb binds to protein X with a Z-score of 43 and to protein Y with a Z-score of 14, then the S-score for the binding of that MAb

to protein X is equal to 29.



#### Immunohistochemistry

**Image 3.** Formalin-fixed, paraffin-embedded human Renal Cell Carcinoma stained with PAX8 Mouse Monoclonal Antibody (PAX8/1492).

Please check the [product details page](#) for more images. Overall 6 images are available for ABIN6940924.