

Datasheet for ABIN6940946
anti-PDCD1LG2 antibody (AA 27-220)



[Go to Product page](#)

5 Images

Overview

Quantity:	100 µg
Target:	PDCD1LG2
Binding Specificity:	AA 27-220
Reactivity:	Human
Host:	Mouse
Clonality:	Monoclonal
Conjugate:	This PDCD1LG2 antibody is un-conjugated
Application:	Western Blotting (WB), ELISA, Flow Cytometry (FACS), Immunofluorescence (IF), Coating (Coat)

Product Details

Immunogen:	Recombinant fragment (around aa 27-220) of human PD-L2 protein (exact sequence is proprietary)
Clone:	PDL2-2676
Isotype:	IgG1 kappa
Specificity:	Recognizes a protein of about 31 kDa, which is identified as PD-L2 (same as PDCD1LG2). Engagement of CD28 by B7-1 (CD80) or B7-2 (CD86) in the presence of antigen promotes T cell proliferation, cytokine production, differentiation of effector T cells and the induction of Bcl-x, a promoter of T cell survival. Conversely, engagement of CTLA4 by B7-1 or B7-2 may inhibit proliferation and IL-2 production. PD-L2 does not bind CD28, cytotoxic T lymphocyte A4 or ICOS (inducible co-stimulator). The constitutive expression of PD-L1 and PD-L2 on parenchymal cells of heart, lung and kidney suggests that the Pdc1-Pdcd-L system could provide unique

Product Details

negative signaling to help prevent autoimmune disease.

Purification: Purified by Protein A/G

Target Details

Target: PDCD1LG2

Alternative Name: PDCD1LG2 ([PDCD1LG2 Products](#))

Molecular Weight: 31kDa

Gene ID: 80380

Application Details

Application Notes: Positive Control: Jurakt, HepG2, THP-1, RAW, NIH3T3, U87 cells Placenta or Pancreas. Thyroid Carcinoma.

Known Application: ELISA (For coating, order antibody without BSA),Flow Cytometry (1-2 μ g/million cells),Immunofluorescence (1-2 μ g/mL),Western Blot (1-2 μ g/mL),Optimal dilution for a specific application should be determined.

Restrictions: For Research Use only

Handling

Concentration: 200 μ g/mL

Buffer: 10 mM PBS with 0.05 % BSA & 0.05 % azide.

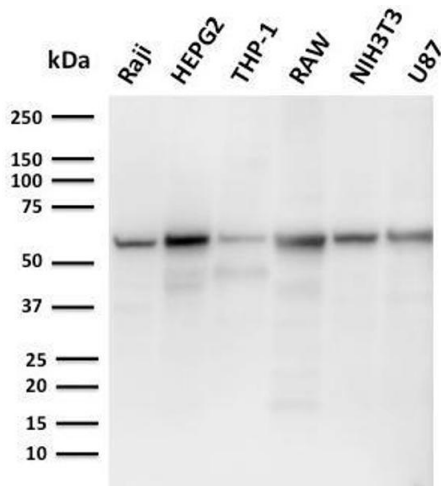
Preservative: Sodium azide

Precaution of Use: This product contains Sodium azide: a POISONOUS AND HAZARDOUS SUBSTANCE which should be handled by trained staff only.

Storage: 4 °C,-80 °C

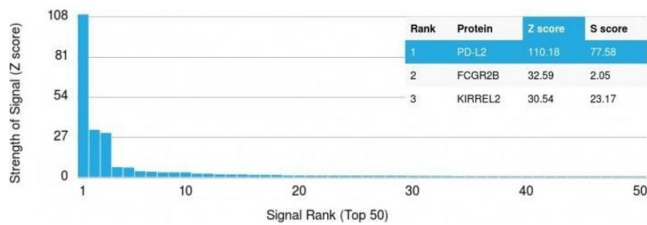
Storage Comment: Antibody with azide - store at 2 to 8°C. Antibody without azide - store at -20 to -80°C. Antibody is stable for 24 months. Non-hazardous. No MSDS required.

Expiry Date: 24 months



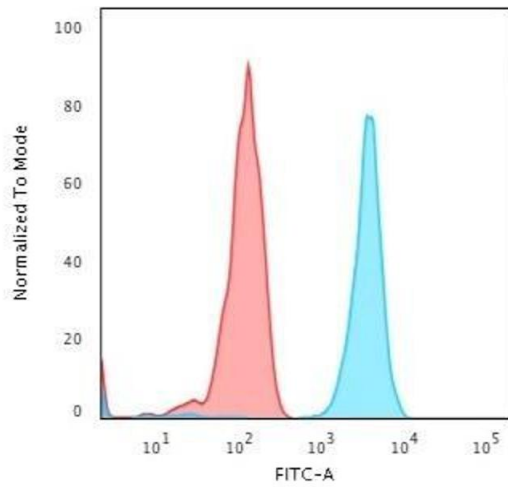
Western Blotting

Image 1. Western Blot Analysis of Raji, HepG2, THP-1, RAW, NIH3T3, U87 cell lysates using PD-L2 Mouse Monoclonal Antibody (PDL2/2676).



Protein Array

Image 2. Analysis of Protein Array containing more than 19,000 full-length human proteins using PD-L2 Mouse Monoclonal Antibody (PDL2/2676) Z- and S- Score: The Z-score represents the strength of a signal that a monoclonal antibody (MAb) (in combination with a fluorescently-tagged anti-IgG secondary antibody) produces when binding to a particular protein on the HuProt™ array. Z-scores are described in units of standard deviations (SDs) above the mean value of all signals generated on that array. If targets on HuProt™ are arranged in descending order of the Z-score, the S-score is the difference (also in units of SDs) between the Z-score. S-score therefore represents the relative target specificity of a MAb to its intended target. A MAb is considered to specific to its intended target, if the MAb has an S-score of at least 2.5. For example, if a MAb binds to protein X with a Z-score of 43 and to protein Y with a Z-score of 14, then the S-score for the binding of that MAb to protein X is equal to 29.



Flow Cytometry

Image 3. Flow Cytometric Analysis of Jurkat cells using PD-L2 Mouse Monoclonal Antibody (PDL2/2676) followed by Goat anti-Mouse IgG-CF488 (Blue); Isotype Control (Red).

Please check the [product details page](#) for more images. Overall 5 images are available for ABIN6940946.