

Datasheet for ABIN6940949
anti-TCL1A antibody (AA 2-109)

5 Images

[Go to Product page](#)

Overview

Quantity:	100 µg
Target:	TCL1A
Binding Specificity:	AA 2-109
Reactivity:	Human
Host:	Mouse
Clonality:	Monoclonal
Conjugate:	This TCL1A antibody is un-conjugated
Application:	Western Blotting (WB), Immunohistochemistry (IHC), Staining Methods (StM)

Product Details

Immunogen:	Recombinant fragment (around aa 2-109) of human TCL1 protein (exact sequence is proprietary)
Clone:	TCL1-2079
Isotype:	IgG2a kappa
Purification:	Purified by Protein A/G

Target Details

Target:	TCL1A
Alternative Name:	TCL1A (TCL1A Products)
Background:	T-cell leukemia/Lymphoma Protein 1A (TCL-1A), also known as p14TCL1 is a product of the

Target Details

TCL1 gene that is involved in T-cell prolymphocytic leukemia (TPLL). T-PLL is a rare form of mature T-cell leukemia, which is consistently associated with chromosomal rearrangements characterized by the juxtaposition of the TCRA locus on chromosome 14q11 and the TCL1A gene on 14q32.13. TCL1 is overexpressed in Burkitt lymphoma, the majority of AIDS-related non-Hodgkin lymphoma-designated immunoblastic plasmacytoid lymphoma, lymphoblastic lymphoma, chronic lymphocytic leukemia, mantle cell lymphoma, follicular lymphoma, diffuse large B-cell lymphoma, and primary cutaneous B-cell lymphoma.

Molecular Weight: 14kDa

Gene ID: 10232

UniProt: [P56279](#)

Pathways: [Stem Cell Maintenance](#)

Application Details

Application Notes: Positive Control: Ramos or Raji cells. Tonsil or T-cell Lymphoma.
Known Application: Western Blot (0.5-1 µg/mL), Immunohistochemistry (Formalin-fixed) (1-2 µg/mL for 30 minutes at RT)(Staining of formalin-fixed tissues requires boiling tissue sections in 10 mM Citrate Buffer, pH 6.0, for 10-20 min followed by cooling at RT for 20 minutes)Optimal dilution for a specific application should be determined.

Restrictions: For Research Use only

Handling

Concentration: 200 µg/mL

Buffer: 10 mM PBS with 0.05 % BSA & 0.05 % azide.

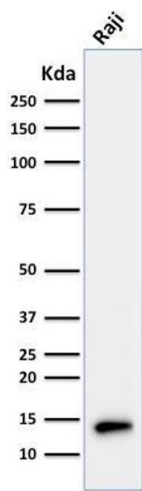
Preservative: Sodium azide

Precaution of Use: This product contains Sodium azide: a POISONOUS AND HAZARDOUS SUBSTANCE which should be handled by trained staff only.

Storage: 4 °C, -80 °C

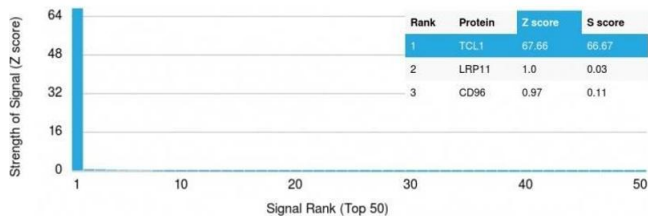
Storage Comment: Antibody with azide - store at 2 to 8°C. Antibody without azide - store at -20 to -80°C. Antibody is stable for 24 months. Non-hazardous. No MSDS required.

Expiry Date: 24 months



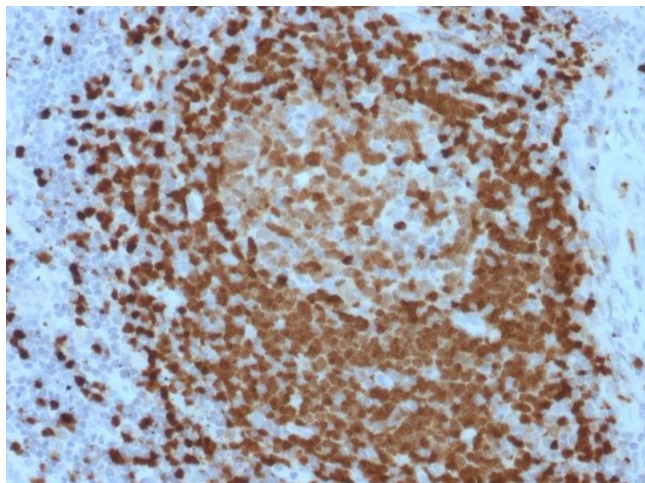
Western Blotting

Image 1. Western Blot Analysis of Raji cell lysate using TCL1 Mouse Monoclonal Antibody (TCL1/2079).



Protein Array

Image 2. Analysis of Protein Array containing more than 19,000 full-length human proteins using TCL1 Mouse Monoclonal Antibody (TCL1/2079). Z- and S- Score: The Z-score represents the strength of a signal that a monoclonal antibody (MAb) (in combination with a fluorescently-tagged anti-IgG secondary antibody) produces when binding to a particular protein on the HuProtTM array. Z-scores are described in units of standard deviations (SD's) above the mean value of all signals generated on that array. If targets on HuProtTM are arranged in descending order of the Z-score, the S-score is the difference (also in units of SD's) between the Z-score. S-score therefore represents the relative target specificity of a MAb to its intended target. A MAb is considered to specific to its intended target, if the MAb has an S-score of at least 2.5. For example, if a MAb binds to protein X with a Z-score of 43 and to protein Y with a Z-score of 14, then the S-score for the binding of that MAb to protein X is equal to 29.



Immunohistochemistry

Image 3. Formalin-fixed, paraffin-embedded human Lymph Node stained with TCL1 Mouse Monoclonal Antibody (TCL1/2079).

Please check the [product details page](#) for more images. Overall 5 images are available for ABIN6940949.