

Datasheet for ABIN6940983

**anti-Cyclin A antibody****3** Images[Go to Product page](#)

## Overview

Quantity:	100 µg
Target:	Cyclin A (CCNA2)
Reactivity:	Human, Mouse, Cow, Green Monkey, Mink
Host:	Mouse
Clonality:	Monoclonal
Conjugate:	This Cyclin A antibody is un-conjugated
Application:	Immunohistochemistry (IHC), Immunofluorescence (IF), Flow Cytometry (FACS), Staining Methods (StM)

## Product Details

Immunogen:	Full length bovine Cyclin A protein
Clone:	E67
Isotype:	IgG2a kappa
Specificity:	It recognizes a protein of 54 kDa, which is identified as cyclin A. Its epitope is located amino acids 144-148 of human Cyclin A2. Cyclins are regulatory subunits of the cyclin-dependent kinases (cdk's) and they control transition at different specific phases of the cell cycle. The temporal expression of cyclins is tightly regulated and subsequently plays a critical role in controlling the enzymatic activity of cdk's. These cyclin/cdk complexes are essential for passage through specific stages in the cell cycle. In mammalian somatic cells, cyclin A is required for S-phase and passage through G2-phase. The D and E type cyclins regulate the passage of G1, while cyclin B is a critical regulator of mitosis. Mutation or disruption of normal cyclin A expression causes cells to arrest in G2-phase.

## Product Details

Purification: Purified by Protein A/G

## Target Details

Target: Cyclin A (CCNA2)

Alternative Name: CCNA2 ([CCNA2 Products](#))

Molecular Weight: 54kDa

Gene ID: 890

UniProt: [P20248](#)

Pathways: [PI3K-Akt Signaling](#), [Cell Division Cycle](#), [AMPK Signaling](#), [Mitotic G1-G1/S Phases](#), [DNA Replication](#), [M Phase](#), [Synthesis of DNA](#)

## Application Details

Application Notes: Positive Control: K-562 and HeLa cells. Human tonsil or lymph node.  
Known Application: Flow Cytometry (0.5-1 µg/million cells), Immunofluorescence (1-2 µg/mL), Immunohistochemistry (Formalin-fixed) (1-2 µg/mL for 30 min at RT)(Staining of formalin-fixed tissues requires boiling tissue sections in 10 mM Citrate Buffer, pH 6.0, for 10-20 min followed by cooling at RT for 20 minutes)Optimal dilution for a specific application should be determined.

Restrictions: For Research Use only

## Handling

Concentration: 200 µg/mL

Buffer: 10 mM PBS with 0.05 % BSA & 0.05 % azide.

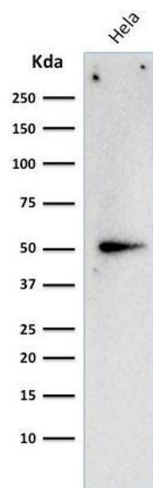
Preservative: Sodium azide

Precaution of Use: This product contains Sodium azide: a POISONOUS AND HAZARDOUS SUBSTANCE which should be handled by trained staff only.

Storage: 4 °C, -80 °C

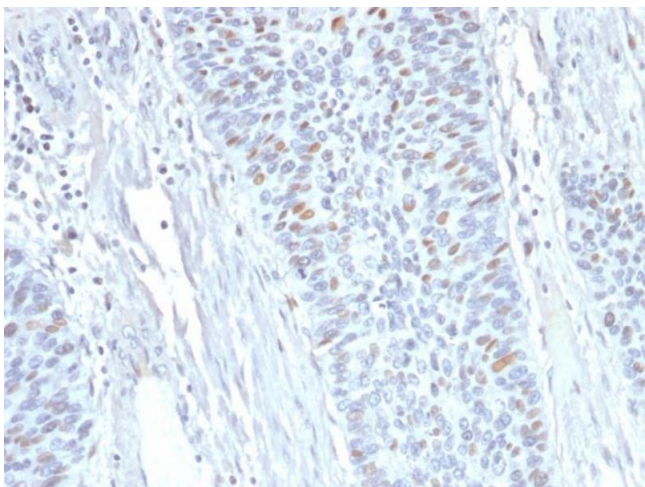
Storage Comment: Antibody with azide - store at 2 to 8°C. Antibody without azide - store at -20 to -80°C. Antibody is stable for 24 months. Non-hazardous. No MSDS required.

Expiry Date: 24 months



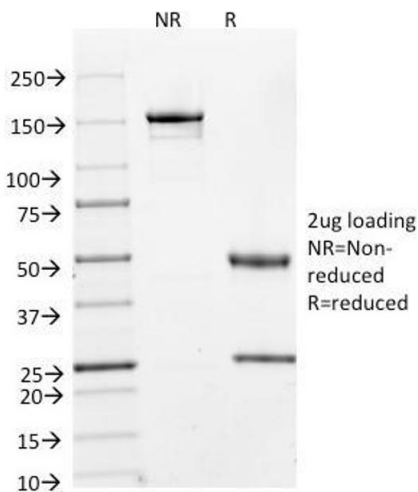
### Western Blotting

**Image 1.** Western Blot Analysis of HeLa cell lysate using Cyclin A2 Mouse Monoclonal Antibody (E67).



### Immunohistochemistry

**Image 2.** Formalin-fixed, paraffin-embedded human Endometrium stained with Cyclin A2 Mouse Monoclonal Antibody (E67).



### SDS-PAGE

**Image 3.** SDS-PAGE Analysis Purified Cyclin A2 Mouse Monoclonal Antibody (E67). Confirmation of Integrity and Purity of Antibody.