



[Go to Product page](#)

Datasheet for ABIN6940985
anti-BCL10 antibody (AA 122-168)

4 Images

Overview

Quantity:	100 µg
Target:	BCL10
Binding Specificity:	AA 122-168
Reactivity:	Human
Host:	Mouse
Clonality:	Monoclonal
Conjugate:	This BCL10 antibody is un-conjugated
Application:	Western Blotting (WB), Immunohistochemistry (IHC), Flow Cytometry (FACS), Staining Methods (StM)

Product Details

Immunogen:	Human BCL10 recombinant protein (epitope aa122-168)
Clone:	BL10-411
Isotype:	IgG1 kappa
Purification:	Purified by Protein A/G

Target Details

Target:	BCL10
Alternative Name:	BCL10 (BCL10 Products)
Background:	BCL10, with an N-terminal caspase recruitment domain (CARD), is found in a number of

Target Details

apoptotic regulatory molecules. It was identified through its direct involvement in t(1,14) of mucosa-associated lymphoid tissue (MALT) lymphoma. Expression of BCL10 was shown to induce NF14) translocation, while 55 % of MALT lymphomas lacking this translocation exhibited the same labeling pattern, although at a much lower level.

Molecular Weight: 33kDa

Gene ID: 8915

UniProt: [O95999](#)

Pathways: [TCR Signaling](#), [Fc-epsilon Receptor Signaling Pathway](#), [Activation of Innate immune Response](#), [Positive Regulation of Immune Effector Process](#), [Production of Molecular Mediator of Immune Response](#), [Tube Formation](#), [Positive Regulation of Endopeptidase Activity](#), [BCR Signaling](#), [Ubiquitin Proteasome Pathway](#), [S100 Proteins](#)

Application Details

Application Notes: Positive Control: K562, HepG2 cells. Lymphoma.
Known Application: Flow Cytometry (0.5-1 µg/million cells), Western Blot (0.5-1 µg/mL), Immunohistochemistry (Formalin-fixed) (0.5-1 µg/mL for 30 minutes at RT) (Staining of formalin-fixed tissues requires boiling tissue sections in 10 mM citrate buffer, pH 6.0, for 10-20 min followed by cooling at RT for 20 minutes)Optimal dilution for a specific application should be determined.

Restrictions: For Research Use only

Handling

Concentration: 200 µg/mL

Buffer: 10 mM PBS with 0.05 % BSA & 0.05 % azide.

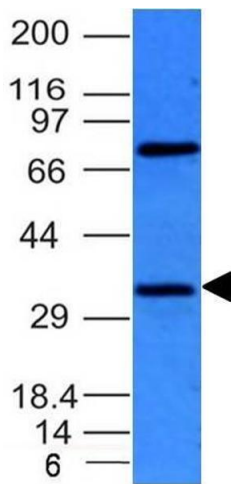
Preservative: Sodium azide

Precaution of Use: This product contains Sodium azide: a POISONOUS AND HAZARDOUS SUBSTANCE which should be handled by trained staff only.

Storage: 4 °C,-80 °C

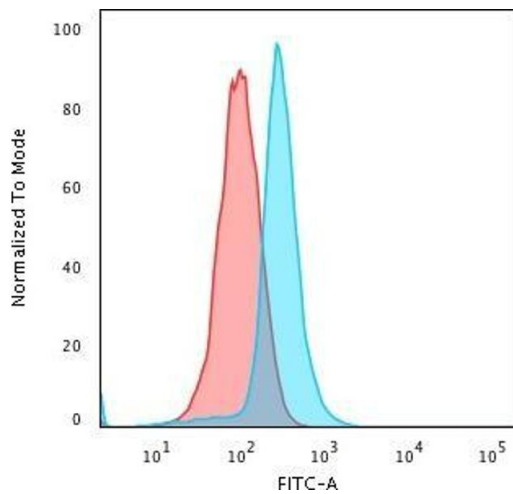
Storage Comment: Antibody with azide - store at 2 to 8°C. Antibody without azide - store at -20 to -80°C. Antibody is stable for 24 months. Non-hazardous. No MSDS required.

Expiry Date: 24 months



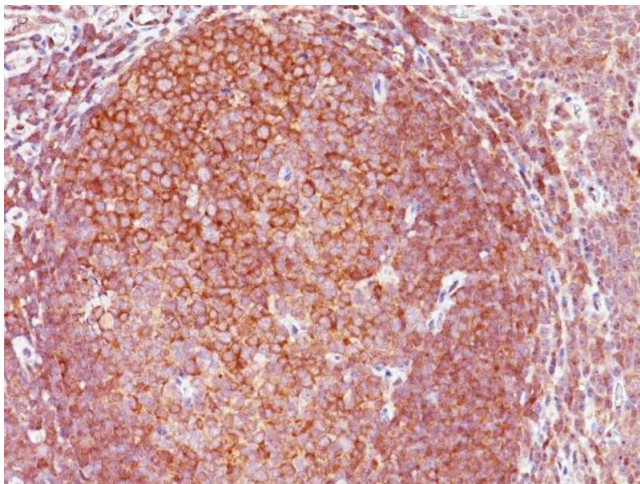
Western Blotting

Image 1. Western Blot of HepG2 cell lysate using BCL10 Mouse Monoclonal Antibody (BL10/411).



Flow Cytometry

Image 2. Flow Cytometric Analysis of PFA-fixed K562 cells using BCL10 Mouse Monoclonal Antibody (BL10/411) followed by Goat anti-Mouse IgG-CF488 (Blue); Isotype Control (Red)



Immunohistochemistry

Image 3. Formalin-fixed, paraffin-embedded human Tonsil stained with BCL10 Mouse Monoclonal Antibody (BL10/411).

Please check the [product details page](#) for more images. Overall 4 images are available for ABIN6940985.