



[Go to Product page](#)

Datasheet for ABIN6940988

Recombinant anti-BCL10 antibody (AA 122-168)

4 Images

Overview

Quantity:	100 µg
Target:	BCL10
Binding Specificity:	AA 122-168
Reactivity:	Human
Host:	Rabbit
Antibody Type:	Recombinant Antibody
Clonality:	Monoclonal
Conjugate:	This BCL10 antibody is un-conjugated
Application:	Immunohistochemistry (IHC), Immunofluorescence (IF), Flow Cytometry (FACS), Staining Methods (StM)

Product Details

Immunogen:	Recombinant human BCL10 protein fragment (around aa122-168) (exact sequence is proprietary)
Clone:	BL10-2988R
Isotype:	IgG
Purification:	Purified by Protein A/G

Target Details

Target:	BCL10
---------	-------

Target Details

Alternative Name:	BCL10 (BCL10 Products)
Background:	BCL10, with an N-terminal caspase recruitment domain (CARD), is found in a number of apoptotic regulatory molecules. It was identified through its direct involvement in t(1,14) of mucosa-associated lymphoid tissue (MALT) lymphoma. Expression of BCL10 was shown to induce NF14) translocation, while 55 % of MALT lymphomas lacking this translocation exhibited the same labeling pattern, although at a much lower level.
Molecular Weight:	33kDa
Gene ID:	8915
UniProt:	O95999
Pathways:	TCR Signaling , Fc-epsilon Receptor Signaling Pathway , Activation of Innate immune Response , Positive Regulation of Immune Effector Process , Production of Molecular Mediator of Immune Response , Tube Formation , Positive Regulation of Endopeptidase Activity , BCR Signaling , Ubiquitin Proteasome Pathway , S100 Proteins

Application Details

Application Notes:	Positive Control: K562, HepG2 cells. Lymphoma. Known Application: Flow Cytometry (0.5-1 µg/million cells), Immunofluorescence (1-2 µg/mL), Immunohistochemistry (Formalin-fixed) (0.5-1 µg/mL for 30 minutes at RT) (Staining of formalin-fixed tissues requires boiling tissue sections in 10 mM citrate buffer, pH 6.0, for 10-20 min followed by cooling at RT for 20 minutes)Optimal dilution for a specific application should be determined.
Restrictions:	For Research Use only

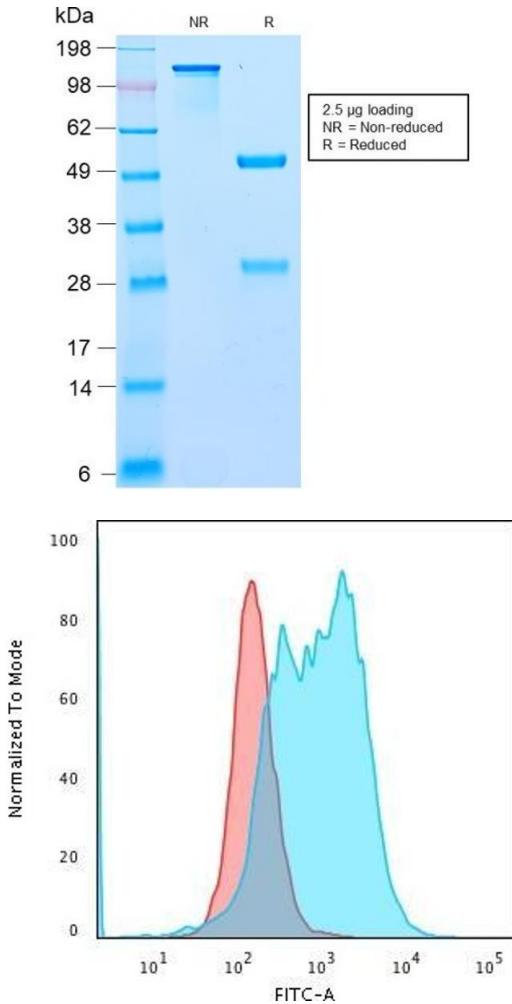
Handling

Concentration:	200 µg/mL
Buffer:	10 mM PBS with 0.05 % BSA & 0.05 % azide.
Preservative:	Sodium azide
Precaution of Use:	This product contains Sodium azide: a POISONOUS AND HAZARDOUS SUBSTANCE which should be handled by trained staff only.
Storage:	4 °C,-80 °C
Storage Comment:	Antibody with azide - store at 2 to 8°C. Antibody without azide - store at -20 to -80°C. Antibody

is stable for 24 months. Non-hazardous. No MSDS required.

Expiry Date: 24 months

Images

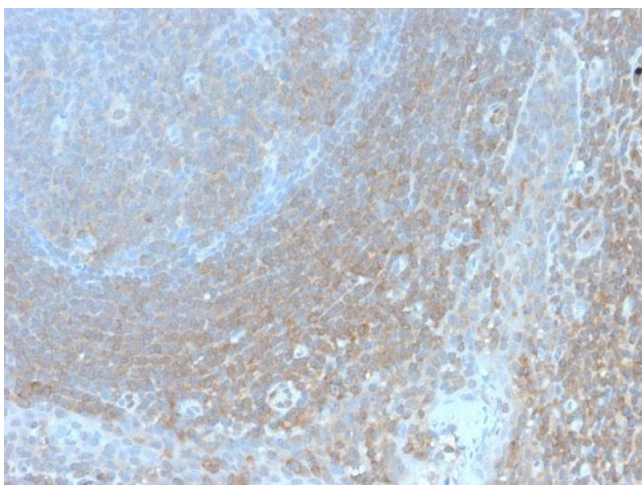


SDS-PAGE

Image 1. SDS-PAGE Analysis Purified BCL10 Recombinant Rabbit Monoclonal Antibody (BL10/2988R). Confirmation of Purity and Integrity of Antibody.

Flow Cytometry

Image 2. Flow Cytometric Analysis of PFA-fixed K562 cells using BCL10 Recombinant Rabbit Monoclonal Antibody (BL10/2988R) followed by Goat anti-Rabbit- IgG-CF488 (Blue); Isotype Control (Red)



Immunohistochemistry

Image 3. Formalin-fixed, paraffin-embedded human Tonsil stained with BCL10 Recombinant Rabbit Monoclonal Antibody (BL10/2988R).

Please check the [product details page](#) for more images. Overall 4 images are available for ABIN6940988.