

Datasheet for ABIN6940994  
**anti-Cyclin E1 antibody (AA 10-176)**

5 Images

[Go to Product page](#)

## Overview

Quantity:	100 µg
Target:	Cyclin E1 (CCNE1)
Binding Specificity:	AA 10-176
Reactivity:	Human
Host:	Mouse
Clonality:	Monoclonal
Conjugate:	This Cyclin E1 antibody is un-conjugated
Application:	Western Blotting (WB), Immunohistochemistry (IHC), Staining Methods (StM)

## Product Details

Immunogen:	Recombinant human Cyclin E (CCNE1) protein fragment (around aa 10-176) (exact sequence is proprietary)
Clone:	CCNE1-2460
Isotype:	IgG2b kappa
Purification:	Purified by Protein A/G

## Target Details

Target:	Cyclin E1 (CCNE1)
Alternative Name:	CCNE1 ( <a href="#">CCNE1 Products</a> )
Background:	Cyclin E belongs to the highly conserved cyclin family, whose members exhibit distinct

## Target Details

expression and degradation patterns which contribute to the temporal coordination of each mitotic event. Cyclins function as regulators of CDK kinases. Cyclin E forms a complex with and functions as a regulatory subunit of CDK2, whose activity is required for cell cycle G1/S transition. Cyclin E accumulates at the G1-S phase boundary and is degraded as cells progress through S phase. Cyclin E overexpression has been observed in many tumors, which results in chromosome instability, and thus may contribute to tumorigenesis.

Molecular Weight: 53kDa

Gene ID: 898

UniProt: [P24864](#)

Pathways: [Cell Division Cycle](#), [Intracellular Steroid Hormone Receptor Signaling Pathway](#), [Nuclear Hormone Receptor Binding](#), [Mitotic G1-G1/S Phases](#)

## Application Details

Application Notes: Positive Control: Jurkat, MCF, A431, HeLa cells. Breast or Colon Carcinoma.  
Known Application: Western Blot (1-2 µg/mL), Immunohistochemistry (Formalin-fixed) (1-2 µg/mL for 30 min at RT)(Staining of formalin-fixed tissues requires boiling tissue sections in 10 mM Citrate Buffer, pH 6.0, for 10-20 min followed by cooling at RT for 20 minutes)Optimal dilution for a specific application should be determined.

Restrictions: For Research Use only

## Handling

Concentration: 200 µg/mL

Buffer: 10 mM PBS with 0.05 % BSA & 0.05 % azide.

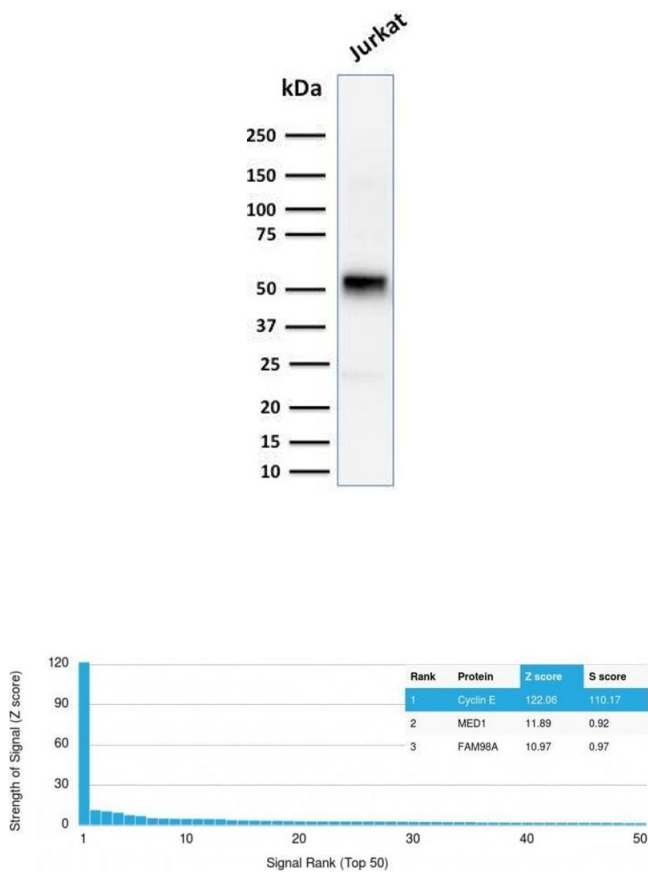
Preservative: Sodium azide

Precaution of Use: This product contains Sodium azide: a POISONOUS AND HAZARDOUS SUBSTANCE which should be handled by trained staff only.

Storage: 4 °C,-80 °C

Storage Comment: Antibody with azide - store at 2 to 8°C. Antibody without azide - store at -20 to -80°C. Antibody is stable for 24 months. Non-hazardous. No MSDS required.

Expiry Date: 24 months

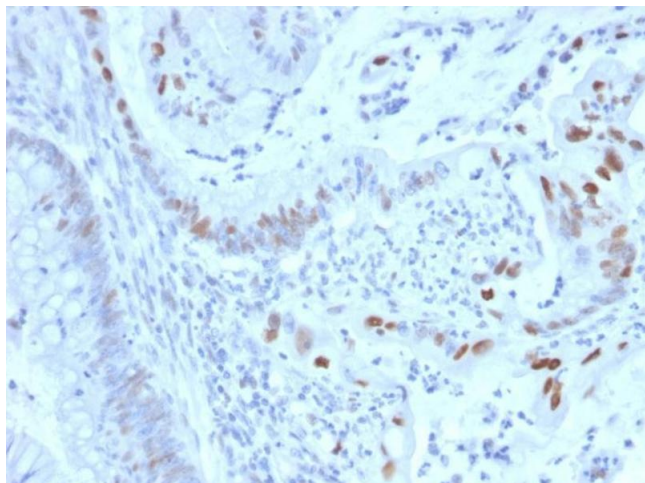


Western Blotting

**Image 1.** Western Blot Analysis of human Jurkat cell lysate using Cyclin E Mouse Monoclonal Antibody (CCNE1/2460).

Protein Array

**Image 2.** Analysis of Protein Array containing more than 19,000 full-length human proteins using Cyclin E Mouse Monoclonal Antibody (CCNE1/2460). Z- and S- Score: The Z-score represents the strength of a signal that a monoclonal antibody (MAb) (in combination with a fluorescently-tagged anti-IgG secondary antibody) produces when binding to a particular protein on the HuProt™ array. Z-scores are described in units of standard deviations (SD's) above the mean value of all signals generated on that array. If targets on HuProt™ are arranged in descending order of the Z-score, the S-score is the difference (also in units of SD's) between the Z-score. S-score therefore represents the relative target specificity of a MAb to its intended target. A MAb is considered to specific to its intended target, if the MAb has an S-score of at least 2.5. For example, if a MAb binds to protein X with a Z-score of 43 and to protein Y with a Z-score of 14, then the S-score for the binding of that MAb to protein X is equal to 29.



#### Immunohistochemistry

**Image 3.** Formalin-fixed, paraffin-embedded human Colon Carcinoma stained with Cyclin E Mouse Monoclonal Antibody (CCNE1/2460).

Please check the [product details page](#) for more images. Overall 5 images are available for ABIN6940994.