

Datasheet for ABIN6941010

**anti-Cyclin B2 antibody****1** Image[Go to Product page](#)

## Overview

Quantity:	100 µg
Target:	Cyclin B2 (CCNB2)
Reactivity:	Human, Mouse, Rat, Xenopus laevis
Host:	Mouse
Clonality:	Monoclonal
Conjugate:	This Cyclin B2 antibody is un-conjugated
Application:	ELISA, Immunohistochemistry (IHC), Coating (Coat)

## Product Details

Immunogen:	Recombinant full-length Xenopus laevis Cyclin B2 protein
Clone:	X29-2
Isotype:	IgG1 kappa
Purification:	Purified by Protein A/G

## Target Details

Target:	Cyclin B2 (CCNB2)
Alternative Name:	CCNB2 ( <a href="#">CCNB2 Products</a> )
Background:	<p>In eukaryotic cells, mitosis is initiated following the activation of a protein kinase known variously as maturation-promoting factor, M phase specific histone kinase or M-phase kinase.</p> <p>This protein kinase is composed of a catalytic subunit (Cdc2), a regulatory subunit (cyclin B) and a low molecular weight subunit (p13-Suc1). The Cdc/cyclin enzyme is subject to multiple</p>

## Target Details

levels of control, of which the regulation of the catalytic subunit by tyrosine phosphorylation is the best understood. Tyrosine phosphorylation inhibits the Cdc2/ cyclin B enzyme, and tyrosine dephosphorylation, occurring at the onset of mitosis, directly activates the pre-MPF complex. Evidence has established that B type cyclins not only act on M phase regulatory subunits of the Cdc2 protein kinase, but also activate the Cdc25A and Cdc25B endogenous tyrosine phosphatase, of which Cdc2 is the physiological substrate. The two B type cyclins, cyclin B1 and cyclin B2, have been shown to have distinct tissue distributions.

Molecular Weight: 51kDa

Gene ID: 9133

UniProt: [O95067](#)

Pathways: [Cell Division Cycle, M Phase](#)

## Application Details

Application Notes: Positive Control: HeLa cells. Human cervical tissue (IHC).  
Known Application: ELISA (For coating, order antibody without BSA), Optimal dilution for a specific application should be determined.

Restrictions: For Research Use only

## Handling

Concentration: 200 µg/mL

Buffer: 10 mM PBS with 0.05 % BSA & 0.05 % azide.

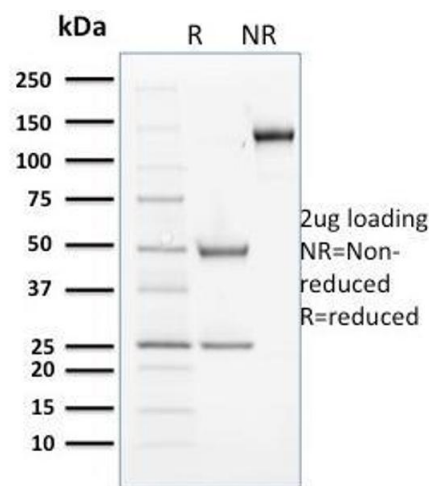
Preservative: Sodium azide

Precaution of Use: This product contains Sodium azide: a POISONOUS AND HAZARDOUS SUBSTANCE which should be handled by trained staff only.

Storage: 4 °C, -80 °C

Storage Comment: Antibody with azide - store at 2 to 8°C. Antibody without azide - store at -20 to -80°C. Antibody is stable for 24 months. Non-hazardous. No MSDS required.

Expiry Date: 24 months



SDS-PAGE

**Image 1.** SDS-PAGE Analysis Purified Cyclin B2 Mouse Monoclonal Antibody (X29.2). Confirmation of Purity and Integrity of Antibody.