

Datasheet for ABIN6941023  
**anti-CD3 epsilon antibody**



[Go to Product page](#)

4 Images

## Overview

Quantity:	100 µg
Target:	CD3 epsilon (CD3E)
Reactivity:	Human, Chimpanzee
Host:	Mouse
Clonality:	Monoclonal
Conjugate:	This CD3 epsilon antibody is un-conjugated
Application:	Flow Cytometry (FACS), Immunofluorescence (IF), ELISA, Coating (Coat), Immunohistochemistry (Acetone-fixed) (IHC (af))

## Product Details

Immunogen:	Human infant thymocytes and peripheral blood lymphocytes from a Sezary Syndrome donor
Clone:	UCHT1
Isotype:	IgG1 kappa
Specificity:	Recognizes the epsilon-chain of CD3, which consists of five different polypeptide chains (designated as gamma, delta, epsilon, zeta, and eta) with MW ranging from 16-28 kDa. The CD3 complex is closely associated at the lymphocyte cell surface with the T cell antigen receptor (TCR). Reportedly, CD3 complex is involved in signal transduction to the T cell interior following antigen recognition. The CD3 antigen is first detectable in early thymocytes and probably represents one of the earliest signs of commitment to the T cell lineage. In cortical thymocytes, CD3 is predominantly intra-cytoplasmic. However, in medullary thymocytes, it appears on the T cell surface. CD3 antigen is a highly specific marker for T cells, and is present in majority of T cell neoplasms.

## Product Details

---

Purification: Purified by Protein A/G

## Target Details

---

Target: CD3 epsilon (CD3E)

Alternative Name: CD3E ([CD3E Products](#))

Molecular Weight: 20kDa

Gene ID: 916

UniProt: [P07766](#)

Pathways: [TCR Signaling](#), [CXCR4-mediated Signaling Events](#), [Ubiquitin Proteasome Pathway](#)

## Application Details

---

Application Notes: Positive Control: Human peripheral blood. Jurkat cells. Tonsil or lymph node.  
Known Application: ELISA (Use Ab at 2-4 µg/mL for coating) (Order Ab without BSA), ,Flow Cytometry (1-2 µg/million cells),Immunofluorescence (1-2 µg/mL). ,Immunohistochemistry (Acetone-fixed frozen tissues) (1-2 µg/mL for 30 minutes at RT),Optimal dilution for a specific application should be determined.

Restrictions: For Research Use only

## Handling

---

Concentration: 200 µg/mL

Buffer: 10 mM PBS with 0.05 % BSA & 0.05 % azide.

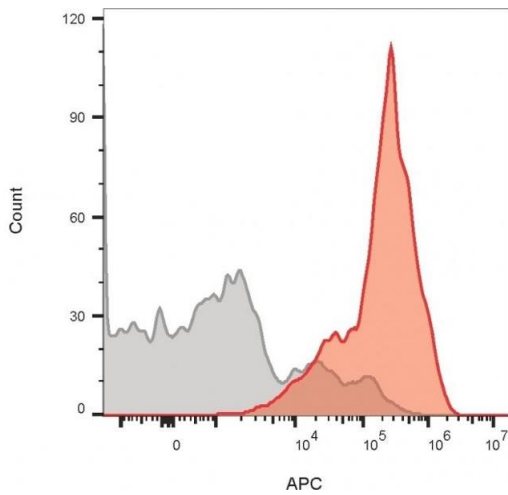
Preservative: Sodium azide

Precaution of Use: This product contains Sodium azide: a POISONOUS AND HAZARDOUS SUBSTANCE which should be handled by trained staff only.

Storage: 4 °C,-80 °C

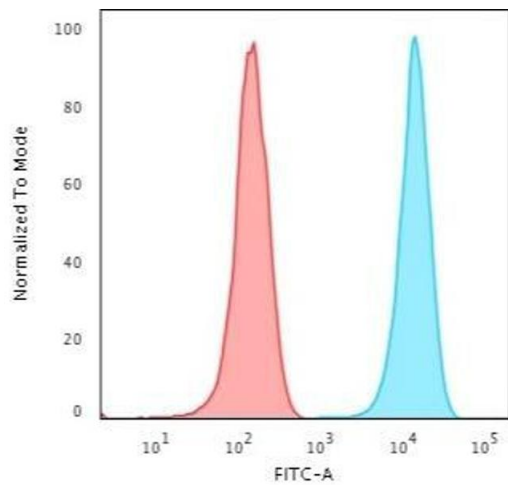
Storage Comment: Antibody with azide - store at 2 to 8°C. Antibody without azide - store at -20 to -80°C. Antibody is stable for 24 months. Non-hazardous. No MSDS required.

Expiry Date: 24 months



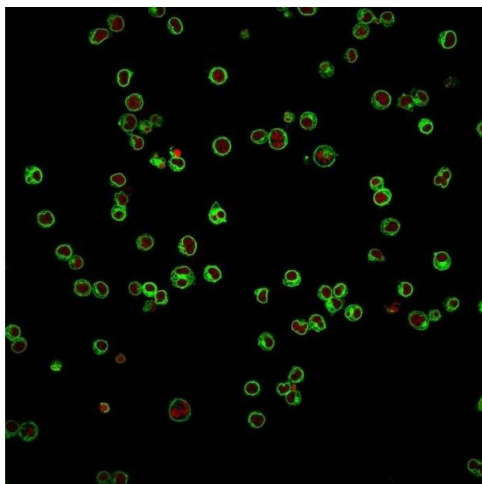
### Flow Cytometry

**Image 1.** Flow cytometric analysis of lymphocyte-gated PBMCs. Cells stained using CD3 Mouse Monoclonal Antibody (UCHT1) (red). Isotype control (gray) followed by goat anti-mouse CF640R.



### Flow Cytometry

**Image 2.** Flow Cytometric Analysis of Jurkat cells. CD3e Mouse Monoclonal Antibody (UCHT1) followed by Goat anti-Mouse IgG-CF488 (Blue); Isotype Control (Red).



### Immunofluorescence

**Image 3.** Immunofluorescence Analysis of Jurkat cells labeling CD3e with CD3e Mouse Monoclonal Antibody (UCHT1) followed by Goat anti-Mouse IgG-CF488 (Green). The nuclear counterstain is Reddot (Red).

Please check the [product details page](#) for more images. Overall 4 images are available for ABIN6941023.