

Datasheet for ABIN6941029
anti-CD3 epsilon antibody

4 Images

[Go to Product page](#)

Overview

Quantity:	100 µg
Target:	CD3 epsilon (CD3E)
Reactivity:	Human, Monkey
Host:	Mouse
Clonality:	Monoclonal
Conjugate:	This CD3 epsilon antibody is un-conjugated
Application:	Flow Cytometry (FACS), Immunofluorescence (IF), Activation (Act), Proliferation Assay (ProA)

Product Details

Immunogen:	Stimulated human leukocytes
Clone:	CRIS-7
Isotype:	IgG2a kappa
Specificity:	Recognizes the epsilon-chain of CD3, which consists of five different polypeptide chains (designated as gamma, delta, epsilon, zeta, and eta) with MW ranging from 16-28 kDa. The CD3 complex is closely associated at the lymphocyte cell surface with the T cell antigen receptor (TCR). Reportedly, CD3 complex is involved in signal transduction to the T cell interior following antigen recognition. The CD3 antigen is first detectable in early thymocytes and probably represents one of the earliest signs of commitment to the T cell lineage. In cortical thymocytes, CD3 is predominantly intra-cytoplasmic. However, in medullary thymocytes, it appears on the T cell surface. CD3 antigen is a highly specific marker for T cells, and is present in majority of T cell neoplasms.

Target Details

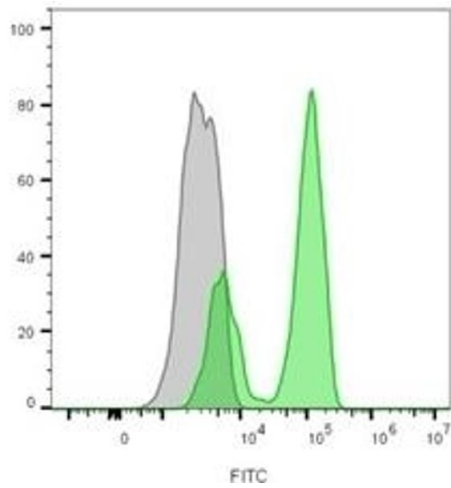
Target:	CD3 epsilon (CD3E)
Alternative Name:	CD3E (CD3E Products)
Molecular Weight:	20kDa
Gene ID:	916
UniProt:	P07766
Pathways:	TCR Signaling , CXCR4-mediated Signaling Events , Ubiquitin Proteasome Pathway

Application Details

Application Notes:	Positive Control: Jurkat cells. Tonsil and lymph node. Known Application: Induce T cell activation and proliferation (Order Ab without Azide), Flow Cytometry (1-2 µg/million cells), Immunofluorescence (1-2 µg/mL), .Optimal dilution for a specific application should be determined.
Restrictions:	For Research Use only

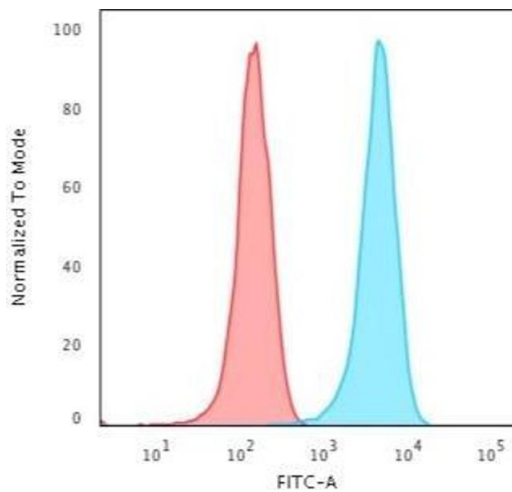
Handling

Concentration:	200 µg/mL
Buffer:	10 mM PBS with 0.05 % BSA & 0.05 % azide.
Preservative:	Sodium azide
Precaution of Use:	This product contains Sodium azide: a POISONOUS AND HAZARDOUS SUBSTANCE which should be handled by trained staff only.
Storage:	4 °C, -80 °C
Storage Comment:	Antibody with azide - store at 2 to 8°C. Antibody without azide - store at -20 to -80°C. Antibody is stable for 24 months. Non-hazardous. No MSDS required.
Expiry Date:	24 months



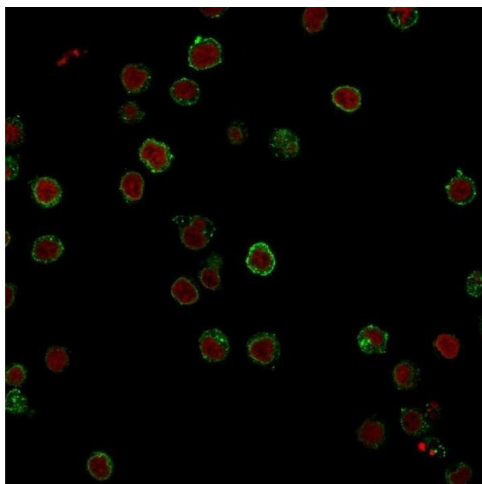
Flow Cytometry

Image 1. Flow cytometry analysis of lymphocyte-gated PBMCs unstained (gray) or stained with CF488A-labeled CD3 mouse monoclonal antibody (CRIS-7) (green)



Flow Cytometry

Image 2. Flow Cytometric Analysis of Jurkat cells. CD3e Mouse Monoclonal Antibody (CRIS-7) followed by Goat anti-Mouse IgG-CF488 (Blue); Isotype Control (Red).



Immunofluorescence

Image 3. Immunofluorescence Analysis of Jurkat cells labeling CD3e with CD3e Mouse Monoclonal Antibody (CRIS-7) followed by Goat anti-Mouse IgG-CF488 (Green). The nuclear counterstain is Reddot (Red).

Please check the [product details page](#) for more images. Overall 4 images are available for ABIN6941029.