

Datasheet for ABIN6941032  
**anti-CD3 epsilon antibody**

## 5 Images

[Go to Product page](#)

## Overview

Quantity:	100 µg
Target:	CD3 epsilon (CD3E)
Reactivity:	Human, Mouse, Rat
Host:	Mouse
Clonality:	Monoclonal
Conjugate:	This CD3 epsilon antibody is un-conjugated
Application:	Flow Cytometry (FACS), Immunofluorescence (IF), Functional Studies (Func)

## Product Details

Immunogen:	Human peripheral lymphocytes
Clone:	RIV9
Isotype:	IgG3 kappa
Specificity:	Recognizes the epsilon-chain of CD3, which consists of five different polypeptide chains (designated as gamma, delta, epsilon, zeta, and eta) with MW ranging from 16-28 kDa. It is found on all mature T-lymphocytes, NK, T-cells, and some thymocytes. CD3, also known as T3, is a member of the immunoglobulin superfamily that plays a role in antigen recognition, signal transduction, and T cell activation. It is expressed, typically at high levels, on peripheral T cells and majority of T cell neoplasms. Thymocytes express CD3 at different level on the cell surface in the course of differentiation and, in cortical thymus, CD3 is predominantly Intracytoplasmic. This MAb is particularly useful for induction of T cell activation in vitro and in vivo due to its unusual IgG3 isotype.

## Target Details

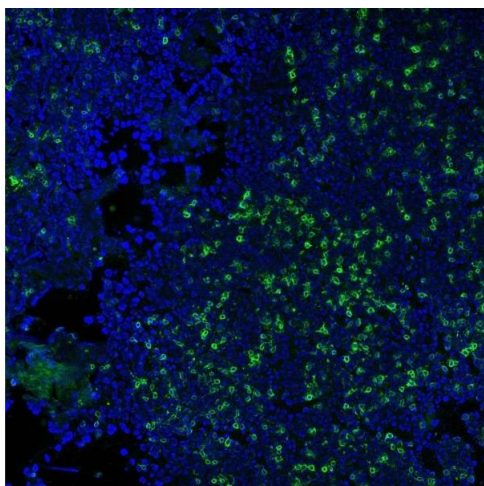
Target:	CD3 epsilon (CD3E)
Alternative Name:	CD3E ( <a href="#">CD3E Products</a> )
Molecular Weight:	20kDa
Gene ID:	916
UniProt:	<a href="#">P07766</a>
Pathways:	<a href="#">TCR Signaling</a> , <a href="#">CXCR4-mediated Signaling Events</a> , <a href="#">Ubiquitin Proteasome Pathway</a>

## Application Details

Application Notes:	Positive Control: Jurkat cells. Tonsil and lymph node. Known Application: Functional Studies (Order Ab without Azide),Flow Cytometry (1-2 µg/million cells), Immunofluorescence (1-2 µg/mL), Optimal dilution for a specific application should be determined.
Restrictions:	For Research Use only

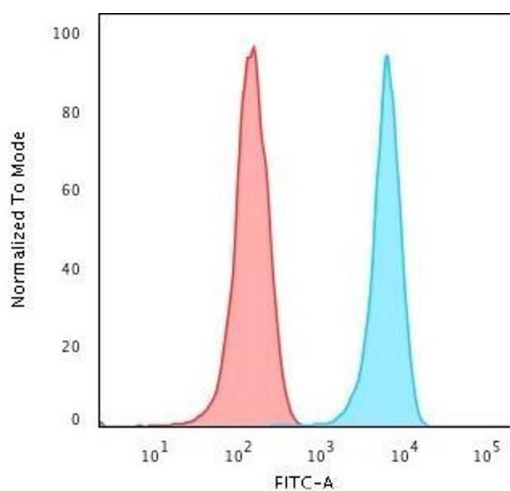
## Handling

Concentration:	200 µg/mL
Buffer:	10 mM PBS with 0.05 % BSA & 0.05 % azide.
Preservative:	Sodium azide
Precaution of Use:	This product contains Sodium azide: a POISONOUS AND HAZARDOUS SUBSTANCE which should be handled by trained staff only.
Storage:	4 °C,-80 °C
Storage Comment:	Antibody with azide - store at 2 to 8°C. Antibody without azide - store at -20 to -80°C. Antibody is stable for 24 months. Non-hazardous. No MSDS required.
Expiry Date:	24 months



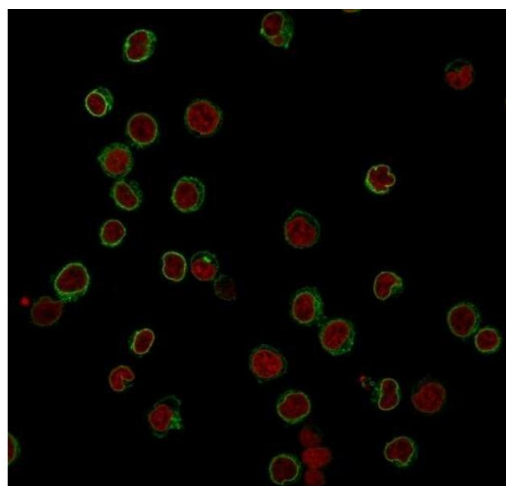
#### Immunofluorescence

**Image 1.** Immunofluorescence Analysis of methanol-fixed human tonsil cryosection stained with CF488A CD3e clone RIV9 (green), mounted in EverBrite<sup>™</sup> Mounting Medium with DAPI (nuclei, blue).



#### Flow Cytometry

**Image 2.** Flow Cytometric Analysis of Jurkat cells using CD3e Mouse Monoclonal Antibody (RIV9) followed by Goat anti-Mouse IgG-CF488 (Blue); Isotype Control (Red).



#### Immunofluorescence

**Image 3.** Immunofluorescence Analysis of Jurkat cells labeling CD3e with CD3e Mouse Monoclonal Antibody (RIV9) followed by Goat anti-Mouse IgG-CF488 (Green). The nuclear counterstain is Reddot (Red).

Please check the [product details page](#) for more images. Overall 5 images are available for ABIN6941032.