

Datasheet for ABIN6941107

**anti-CD20 antibody**

## 7 Images

[Go to Product page](#)

## Overview

Quantity:	100 µg
Target:	CD20 (MS4A1)
Reactivity:	Human
Host:	Mouse
Clonality:	Monoclonal
Conjugate:	This CD20 antibody is un-conjugated
Application:	Flow Cytometry (FACS), Immunofluorescence (IF), Western Blotting (WB), Immunohistochemistry (IHC), Staining Methods (StM)

## Product Details

Immunogen:	Human tonsil B cells
Clone:	L26
Isotype:	IgG2a kappa
Specificity:	Recognizes a protein of 30-33 kDa, which is identified as CD20. Its epitope is located in the cytoplasmic domain of CD20 and was, therefore, ascribed as CD20cy in the 5th Workshop. CD20 is a non-Ig differentiation antigen of B-cells and its expression is restricted to normal and neoplastic B-cells, being absent from all other leukocytes and tissues. CD20 is expressed by pre B-cells and persists during all stages of B-cell maturation but is lost upon terminal differentiation into plasma cells. This MAbs can be used for immunophenotyping of leukemia and malignant cells, B lymphocyte detection in peripheral blood and B cell localization in tissues. It reacts with the majority of B-cells present in peripheral blood and lymphoid tissues and their derived lymphomas. In lymphoid tissue, germinal center blasts and B-immunoblasts

## Product Details

are particularly reactive. It is a reliable antibody for ascribing a B-cell phenotype in known lymphoid tissues. Rarely, CD20-positive T-cell lymphomas have been reported. Reactivity has also been noted with Reed-Sternberg cells in cases of Hodgkin s disease, particularly of lymphocyte predominant type.

Purification: Purified by Protein A/G

## Target Details

Target: CD20 (MS4A1)

Alternative Name: MS4A1 ([MS4A1 Products](#))

Molecular Weight: 33-37kDa

Gene ID: 931

UniProt: [P11836](#)

## Application Details

Application Notes: Positive Control: Daudi, Raji and U266 cell lines. Human lymphocytes. Human lymph node or tonsil.

Known Application: Flow Cytometry (0.5-1 µg/million cells), Immunofluorescence (1-2 µg/mL), Western Blot (1-2 µg/mL), ,Immunohistochemistry (Formalin-fixed) (0.5-1 µg/mL for 30 minutes at RT),(Staining of formalin-fixed tissues requires boiling tissue sections in 10 mM citrate buffer, pH 6.0, for 10-20 min followed by cooling at RT for 20 minutes),Optimal dilution for a specific application should be determined.

Restrictions: For Research Use only

## Handling

Concentration: 200 µg/mL

Buffer: 10 mM PBS with 0.05 % BSA & 0.05 % azide.

Preservative: Sodium azide

Precaution of Use: This product contains Sodium azide: a POISONOUS AND HAZARDOUS SUBSTANCE which should be handled by trained staff only.

Storage: 4 °C,-80 °C

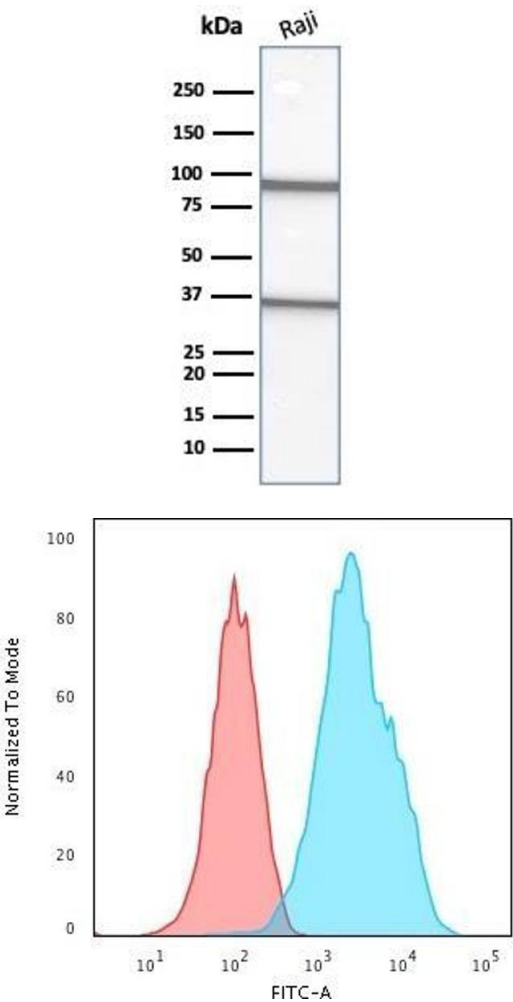
Storage Comment: Antibody with azide - store at 2 to 8°C. Antibody without azide - store at -20 to -80°C. Antibody

Handling

is stable for 24 months. Non-hazardous. No MSDS required.

Expiry Date: 24 months

Images

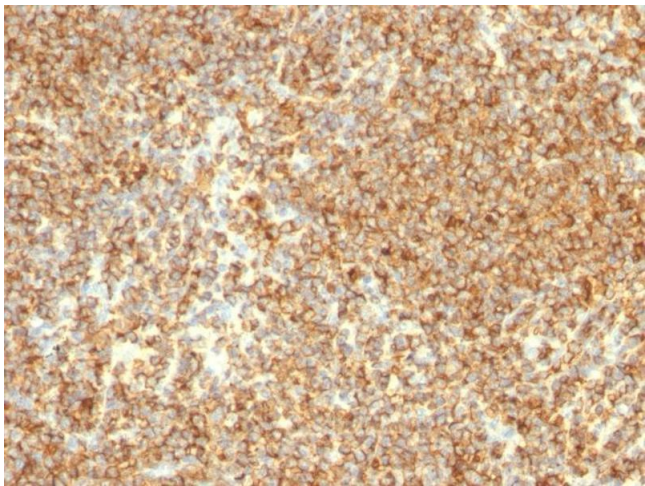


Western Blotting

**Image 1.** Western Blot Analysis of Raji cell lysate using CD20 Mouse Monoclonal Antibody (L26).

Flow Cytometry

**Image 2.** Cytometric Analysis of Raji cells using CD20 Mouse Monoclonal Antibody (L26) followed by Goat anti-Mouse IgG-CF488 (Blue); Isotype Control (Red).



Immunohistochemistry

**Image 3.** Formalin-fixed, paraffin-embedded human Lymphoma stained with CD20 Mouse Monoclonal Antibody (L26).

Please check the [product details page](#) for more images. Overall 7 images are available for ABIN6941107.