



Datasheet for ABIN6941118 anti-CD22 antibody



[Go to Product page](#)

2 Images

Overview

Quantity:	100 µg
Target:	CD22
Reactivity:	Human, Mouse, Rat
Host:	Mouse
Clonality:	Monoclonal
Conjugate:	This CD22 antibody is un-conjugated
Application:	Flow Cytometry (FACS), Immunomicroscopy (IM)

Product Details

Immunogen:	Human Raji cells
Clone:	MYG13
Isotype:	IgG1 kappa
Specificity:	Recognizes a protein of 130-140 kDa, identified as CD22 (also known as BL-CAM). CD22 expression is restricted to normal and neoplastic B cells and is absent from other haemopoietic cell types. In B-cell ontogeny, CD22 is first expressed in the cytoplasm of pro-B and pre-B cells, and on the surface as B cells mature to become IgD+. It is not expressed by plasma cells, CD22 is found highly expressed in follicular mantle and marginal zone B-cells, and while germinal center B-cells are relatively weak. CD22 is a member of the immunoglobulin superfamily and serves as an adhesion receptor for sialic acid-bearing ligands expressed on erythrocytes and all leukocyte classes. It also associates with tyrosine kinases and play a role in signal transduction and B-cell activation.

Product Details

Purification: Purified by Protein A/G

Target Details

Target: CD22

Alternative Name: CD22 ([CD22 Products](#))

Molecular Weight: 130-140kDa

Gene ID: 933

UniProt: [P20273](#)

Application Details

Application Notes: Positive Control: Ramos, Raji, Daudi, IM9, JY25 and human peripheral blood lymphocytes. Human tonsil and lymphocytes.
Known Application: Flow Cytometry (0.5-1 µg/million cells), Optimal dilution for a specific application should be determined.

Restrictions: For Research Use only

Handling

Concentration: 200 µg/mL

Buffer: 10 mM PBS with 0.05 % BSA & 0.05 % azide.

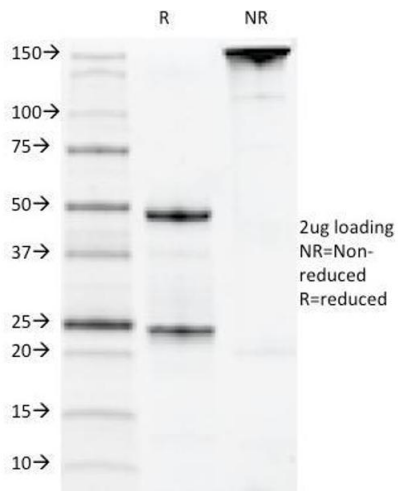
Preservative: Sodium azide

Precaution of Use: This product contains Sodium azide: a POISONOUS AND HAZARDOUS SUBSTANCE which should be handled by trained staff only.

Storage: 4 °C, -80 °C

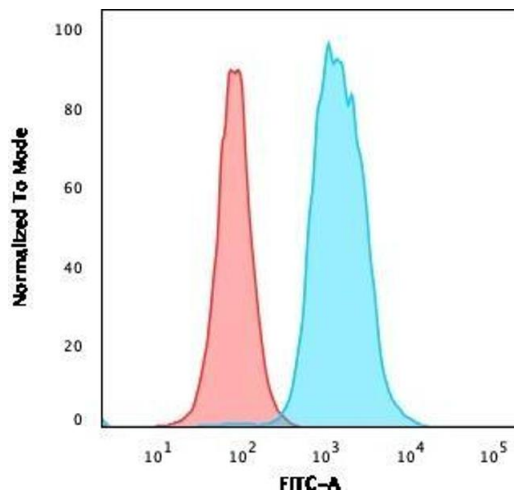
Storage Comment: Antibody with azide - store at 2 to 8°C. Antibody without azide - store at -20 to -80°C. Antibody is stable for 24 months. Non-hazardous. No MSDS required.

Expiry Date: 24 months



SDS-PAGE

Image 1. SDS-PAGE Analysis Purified CD22 Mouse Monoclonal Antibody (MYG13). Confirmation of Integrity and Purity of Antibody.



Flow Cytometry

Image 2. Flow Cytometric Analysis of Ramos cells using CD22 Mouse Monoclonal Antibody (MYG13) followed by goat anti-Mouse IgG-CF488 (Blue); Isotype Control (Red).