

Datasheet for ABIN6941120
anti-CD22 antibody (AA 52-178)

8 Images

[Go to Product page](#)

Overview

Quantity:	100 µg
Target:	CD22
Binding Specificity:	AA 52-178
Reactivity:	Human
Host:	Mouse
Clonality:	Monoclonal
Conjugate:	This CD22 antibody is un-conjugated
Application:	Flow Cytometry (FACS), Western Blotting (WB), ELISA, Immunohistochemistry (IHC), Immunofluorescence (IF), Coating (Coat), Staining Methods (StM)

Product Details

Immunogen:	Recombinant fragment (around aa52-178) of human BL-CAM/CD22 protein (exact sequence is proprietary)
Clone:	BLCAM-1795
Isotype:	IgG1 kappa
Specificity:	Recognizes a protein of 130-140 kDa, identified as CD22 (also known as BL-CAM). CD22 expression is restricted to normal and neoplastic B cells and is absent from other haemopoietic cell types. In B-cell ontogeny, CD22 is first expressed in the cytoplasm of pro-B and pre-B cells, and on the surface as B cells mature to become IgD+. It is not expressed by plasma cells, CD22 is found highly expressed in follicular mantle and marginal zone B-cells, and while germinal center B-cells are relatively weak. CD22 is a member of the immunoglobulin superfamily and

Product Details

serves as an adhesion receptor for sialic acid-bearing ligands expressed on erythrocytes and all leukocyte classes. It also associates with tyrosine kinases and play a role in signal transduction and B-cell activation.

Purification: Purified by Protein A/G

Target Details

Target: CD22

Alternative Name: CD22 ([CD22 Products](#))

Molecular Weight: 130-140kDa

Gene ID: 933

UniProt: [P20273](#)

Application Details

Application Notes: Positive Control: Raji, Ramos, MOLT4 and human peripheral blood lymphocytes. Tonsil, Lymph Node or Spleen.

Known Application: ELISA (Use Ab at 2-4 µg/mL for coating) (Order Ab without BSA),Flow Cytometry (1-2 µg/million cells),Western Blot (1-2 µg/mL),Immunofluorescence (1-2 µg/mL),Immunohistochemistry (Formalin-fixed) (1-2 µg/mL for 30 minutes at RT)(Staining of formalin-fixed tissues requires boiling tissue sections in 10 mM Tris buffer with 1 mM EDTA, pH 9.0, for 10-20 min followed by cooling at RT for 20 minutes)Optimal dilution for a specific application should be determined.

Restrictions: For Research Use only

Handling

Concentration: 200 µg/mL

Buffer: 10 mM PBS with 0.05 % BSA & 0.05 % azide.

Preservative: Sodium azide

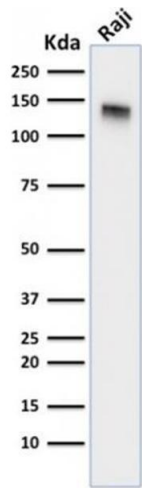
Precaution of Use: This product contains Sodium azide: a POISONOUS AND HAZARDOUS SUBSTANCE which should be handled by trained staff only.

Storage: 4 °C, -80 °C

Storage Comment: Antibody with azide - store at 2 to 8°C. Antibody without azide - store at -20 to -80°C. Antibody

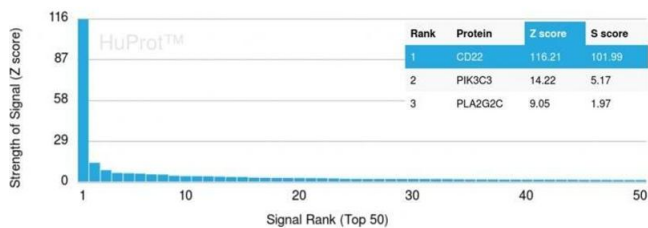
is stable for 24 months. Non-hazardous. No MSDS required.

Expiry Date: 24 months



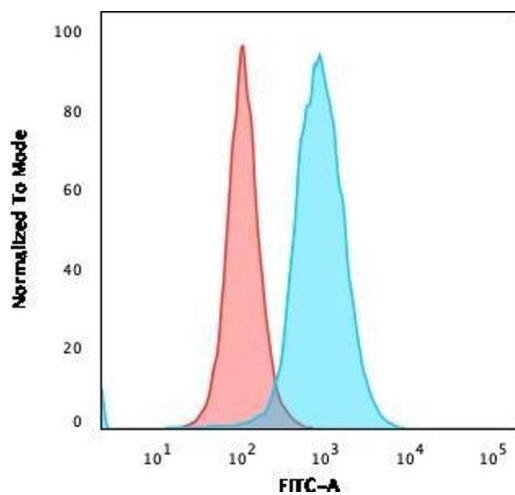
Western Blotting

Image 1. Western Blot Analysis of Raji cell lysate using CD22-Monospecific Mouse Monoclonal Antibody (BLCAM/1795).



Protein Array

Image 2. Analysis of Protein Array containing more than 19,000 full-length human proteins using CD22-Monospecific Mouse Monoclonal Antibody (BLCAM/1795) Z- and S-Score: The Z-score represents the strength of a signal that a monoclonal antibody (MAb) (in combination with a fluorescently-tagged anti-IgG secondary antibody) produces when binding to a particular protein on the HuProt™ array. Z-scores are described in units of standard deviations (SD's) above the mean value of all signals generated on that array. If targets on HuProt™ are arranged in descending order of the Z-score, the S-score is the difference (also in units of SD's) between the Z-score. S-score therefore represents the relative target specificity of a MAb to its intended target. A MAb is considered to specific to its intended target, if the MAb has an S-score of at least 2.5. For example, if a MAb binds to protein X with a Z-score of 43 and to protein Y with a Z-score of 14, then the S-score for the binding of that MAb to protein X is equal to 29.



Flow Cytometry

Image 3. Flow Cytometric Analysis of paraformaldehyde-fixed MOLT4 cells. CD22-Monospecific Mouse Monoclonal Antibody (BLCAM/1795) followed by goat anti-Mouse IgG-CF488 (Blue); Isotype Control (Red).

Please check the [product details page](#) for more images. Overall 8 images are available for ABIN6941120.