

Datasheet for ABIN6941303

anti-GJB1 antibody**1** Image[Go to Product page](#)

Overview

Quantity:	100 µg
Target:	GJB1
Reactivity:	Rat, Mouse
Host:	Rat
Clonality:	Monoclonal
Conjugate:	This GJB1 antibody is un-conjugated
Application:	ELISA, Coating (Coat)

Product Details

Immunogen:	Mouse liver DOC-JR-plasma membranes
Clone:	R5-21C
Isotype:	IgG2a kappa
Specificity:	This Ab recognizes a protein of 27-32 kDa, identified as Connexin 32. The connexin family of proteins forms hexameric complexes called 'connexons' that facilitate movement of low molecular weight proteins between cells via gap junctions. Connexin proteins share a common topology of four transmembrane therefore, one connexin usually cannot fully substitute for another.

Target Details

Target:	GJB1
Alternative Name:	Gjb1 (GJB1 Products)

Target Details

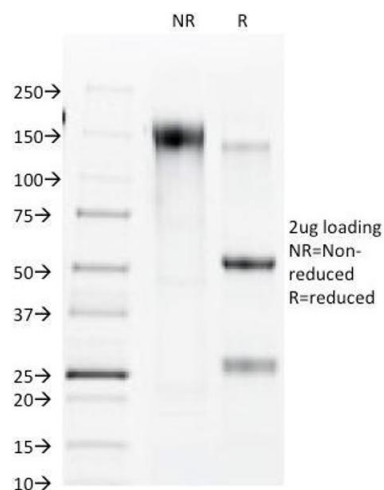
Molecular Weight:	27-32kDa
Gene ID:	14618
UniProt:	P28230
Pathways:	Cell-Cell Junction Organization

Application Details

Application Notes:	Positive Control: MCF-7 cells. Pancreas, Liver, Kidney, Stomach or Tonsil. Known Application: ELISA (For coating use Ab at 1-5 µg/mL, order Ab without BSA), Optimal dilution for a specific application should be determined.
Restrictions:	For Research Use only

Handling

Concentration:	200 µg/mL
Buffer:	10 mM PBS with 0.05 % BSA & 0.05 % azide.
Preservative:	Sodium azide
Precaution of Use:	This product contains Sodium azide: a POISONOUS AND HAZARDOUS SUBSTANCE which should be handled by trained staff only.
Storage:	4 °C,-80 °C
Storage Comment:	Antibody with azide - store at 2 to 8°C. Antibody without azide - store at -20 to -80°C. Antibody is stable for 24 months. Non-hazardous. No MSDS required.
Expiry Date:	24 months



SDS-PAGE

Image 1. SDS-PAGE Analysis Purified Connexin 32 Mouse Monoclonal Antibody (R5.21C). Confirmation of Purity and Integrity of Antibody.