



[Go to Product page](#)

Datasheet for ABIN6941311

anti-Erythrocyte Specific Antigen antibody

1 Image

Overview

Quantity:	100 µg
Target:	Erythrocyte Specific Antigen
Reactivity:	Human
Host:	Mouse
Clonality:	Monoclonal
Conjugate:	This Erythrocyte Specific Antigen antibody is un-conjugated
Application:	Flow Cytometry (FACS), Immunofluorescence (IF)

Product Details

Immunogen:	Hepatocytes from a 20-22 week-old human fetus
Clone:	SFL23-6
Isotype:	IgG2b kappa
Purification:	Purified by Protein A/G

Target Details

Target:	Erythrocyte Specific Antigen
Alternative Name:	Erythrocyte Specific (Erythrocyte Specific Antigen Products)
Background:	Mouse Anti-Human Erythrocytes Clone SFL23.6 MAb is directed against an erythroid cell surface antigen. It shows a well-defined reactivity with cells of the erythroid lineage at all stages of maturation in the peripheral blood, bone marrow, and fetal liver. Non-erythroid lineages are negative by flow cytometry. Although the exact identity of the antigen has yet to be determined,

Target Details

it has been shown to be distinct from Glycophorin A. This MAb is useful in the diagnosis of erythroleukemia, identification of bone marrow erythroid precursors, gating erythroid nucleated precursor cells from malignant cells in bone marrow specimens.

Application Details

Application Notes: Positive Control: RBC. Placenta.
Known Application: Flow Cytometry (0.5-1 µg/million cells), Immunofluorescence (0.5-1 µg/mL), Optimal dilution for a specific application should be determined.

Restrictions: For Research Use only

Handling

Concentration: 200 µg/mL

Buffer: 10 mM PBS with 0.05 % BSA & 0.05 % azide.

Preservative: Sodium azide

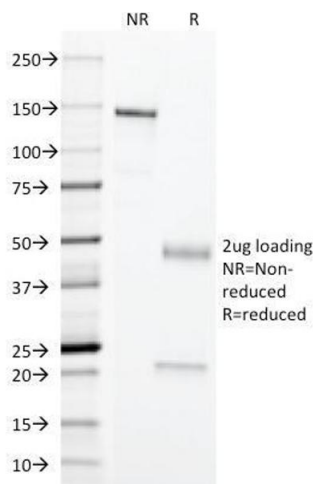
Precaution of Use: This product contains Sodium azide: a POISONOUS AND HAZARDOUS SUBSTANCE which should be handled by trained staff only.

Storage: 4 °C, -80 °C

Storage Comment: Antibody with azide - store at 2 to 8°C. Antibody without azide - store at -20 to -80°C. Antibody is stable for 24 months. Non-hazardous. No MSDS required.

Expiry Date: 24 months

Images



SDS-PAGE

Image 1. SDS-PAGE Analysis Purified Erythrocyte Specific Mouse Monoclonal Antibody (SFL23.6). Confirmation of Purity and Integrity of Antibody.