



## Datasheet for ABIN6941315 anti-Flagellin antibody



[Go to Product page](#)

### 1 Image

#### Overview

Quantity:	100 µg
Target:	Flagellin (FliC)
Reactivity:	Borrelia burgdorferi
Host:	Mouse
Clonality:	Monoclonal
Conjugate:	This Flagellin antibody is un-conjugated
Application:	ELISA, Immunofluorescence (IF), Coating (Coat)

#### Product Details

Immunogen:	A crude sonicate of Borrelia spirochetes
Clone:	6802
Isotype:	IgG2a kappa
Specificity:	<p>This MAbs recognizes Borrelia burgdorferi, and is specific for the p41 flagellar antigen (Flagellin). Borrelia burgdorferi is a species of bacteria of the spirochete class of the genus Borrelia. B. burgdorferi is a vector-borne, multisystem inflammatory disease caused by the spirochete Borrelia burgdorferi, which is transmitted to humans by the bite of ticks of the Ixodes ricinus complex. B. burgdorferi is divided into at least 11 species including Borrelia burgdorferi sensu stricto. B. burgdorferi sensu stricto resides in the cerebrospinal fluid of mammals in Europe and the United States and is most often associated with Lyme arthritis. B. burgdorferi sensu stricto commonly undergoes genome-wide genetic exchange, including plasmid transfers. This frequent recombination implies a potential for rapid adaptive evolution as well as a possible polygenic basis of B. burgdorferi sensu stricto pathogenicity.</p>

## Product Details

---

Purification: Purified by Protein A/G

## Target Details

---

Target: Flagellin (FliC)

Alternative Name: Borrelia burgdorferi (p41 Flagellin) ([FliC Products](#))

Molecular Weight: 41kDa

Pathways: [Inflammasome](#)

## Application Details

---

Application Notes: Positive Control: Borrelia burgdorferi extract or infected cells. Tissue.  
Known Application: ELISA (For coating use Ab at 1-5 µg/mL, order Ab without BSA), Immunofluorescence (1-2 µg/mL), Optimal dilution for a specific application should be determined.

Restrictions: For Research Use only

## Handling

---

Concentration: 200 µg/mL

Buffer: 10 mM PBS with 0.05 % BSA & 0.05 % azide.

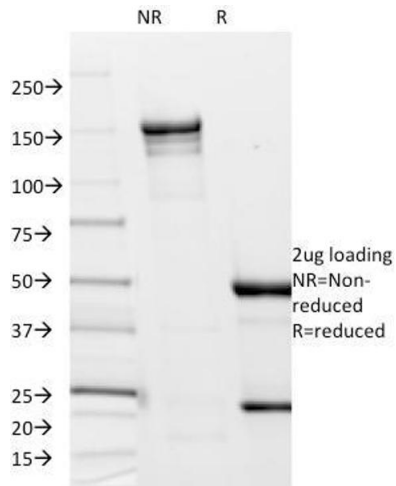
Preservative: Sodium azide

Precaution of Use: This product contains Sodium azide: a POISONOUS AND HAZARDOUS SUBSTANCE which should be handled by trained staff only.

Storage: 4 °C, -80 °C

Storage Comment: Antibody with azide - store at 2 to 8°C. Antibody without azide - store at -20 to -80°C. Antibody is stable for 24 months. Non-hazardous. No MSDS required.

Expiry Date: 24 months



### SDS-PAGE

**Image 1.** SDS-PAGE Analysis Purified *Borrelia burgdorferi* (p41 Flagellin) (6802). Confirmation of Integrity and Purity of Antibody.