

Datasheet for ABIN6941330

anti-CYP3A1 antibody

1 Image

[Go to Product page](#)

Overview

Quantity:	100 µg
Target:	CYP3A1 (Cyp3a1)
Reactivity:	Rat, Human, Mouse, Pig
Host:	Mouse
Clonality:	Monoclonal
Conjugate:	This CYP3A1 antibody is un-conjugated
Application:	Western Blotting (WB), ELISA, Coating (Coat), Flow Cytometry (FACS)

Product Details

Immunogen:	Full length protein (Rat). Rat liver cytochrome P450 3A1.
Clone:	P6
Isotype:	IgG1 kappa
Specificity:	Cytochrome P450 oxidase (commonly abbreviated CYP) is a generic term for a large number of related, but distinct, oxidative enzymes important in vertebrate physiology. The cytochrome P450 mixed-function monooxygenase system is probably the most important element of Phase I metabolism in mammals. P450s are membrane-bound, either in the inner membrane of mitochondria or in the endoplasmic reticulum of cells where they metabolise thousands of endogenous and exogenous compounds. In the liver, these substrates include toxins, drugs, and other unneeded and potentially harmful molecules. Humans have 18 families of cytochrome P450 genes and 43 subfamilies, the CYP1 family is involved in drug metabolism and includes 3 subfamilies, 3 genes and 1 pseudogene. The CYP2 family are part of the microsomal drug metabolising system that is responsible for oxidation of many therapeutic

Product Details

agents as well as steroids, fatty acids and many other endogenous substances. Cytochrome P450 3A4 is abundantly expressed in liver and small intestine and is inducible by barbiturates, glucocorticoids and rifampicin. P6 is highly specific for members of the CYP 3A gene family and cross reacts with CY 3A4 in human, CYP 3A in rat and potentially CYP 3A11 (based on inducibility) in mice.

Purification: Purified by Protein A/G

Target Details

Target: CYP3A1 (Cyp3a1)

Alternative Name: CYP3A1 ([Cyp3a1 Products](#))

Molecular Weight: 51kDa

Application Details

Application Notes: Positive Control: HeLa cells. Liver or Cardiac muscle.
Known Application: ELISA (For coating, order antibody without BSA), Flow Cytometry (0.5-1 µg/million cells), Western Blot (0.5-1.0 µg/mL), Optimal dilution for a specific application should be determined.

Restrictions: For Research Use only

Handling

Concentration: 200 µg/mL

Buffer: 10 mM PBS with 0.05 % BSA & 0.05 % azide.

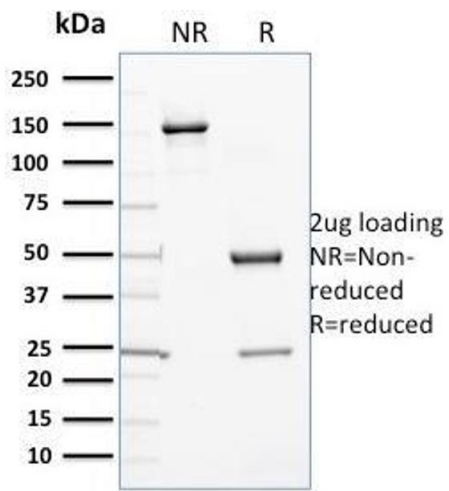
Preservative: Sodium azide

Precaution of Use: This product contains Sodium azide: a POISONOUS AND HAZARDOUS SUBSTANCE which should be handled by trained staff only.

Storage: 4 °C, -80 °C

Storage Comment: Antibody with azide - store at 2 to 8°C. Antibody without azide - store at -20 to -80°C. Antibody is stable for 24 months. Non-hazardous. No MSDS required.

Expiry Date: 24 months



SDS-PAGE

Image 1. SDS-PAGE Analysis Purified Cytochrome P450 1A1/1A2 Mouse Monoclonal Antibody (P6). Confirmation of Purity and Integrity of Antibody.