



Datasheet for ABIN6941339

## anti-ACTA1/ACTA2A/ACTG2 antibody



[Go to Product page](#)

### 5 Images

#### Overview

Quantity:	100 µg
Target:	ACTA1/ACTA2A/ACTG2
Reactivity:	Human, Rabbit, Rat, Cat, Chicken, Dog, Mouse
Host:	Mouse
Clonality:	Monoclonal
Conjugate:	This ACTA1/ACTA2A/ACTG2 antibody is un-conjugated
Application:	Flow Cytometry (FACS), Immunofluorescence (IF), Immunohistochemistry (IHC), Staining Methods (StM)

#### Product Details

Immunogen:	SDS extract of human myocardium.
Clone:	HHF35
Isotype:	IgG1 kappa
Specificity:	This antibody recognizes actin of skeletal, cardiac, and smooth muscle cells. It is not reactive with other mesenchymal cells except for myoepithelium. Actin can be resolved on the basis of its isoelectric points into three distinctive components: alpha, beta, and gamma in order of increasing isoelectric point. Anti-muscle specific actin recognizes alpha and gamma isotypes of all muscle groups. Non-muscle cells such as vascular endothelial cells and connective tissues are non-reactive. Also, neoplastic cells of non-muscle-derived tissue such as carcinomas, melanomas, and lymphomas are negative. It stains tumors of smooth muscle (leiomyomas and leiomyosarcomas) as well as skeletal muscle (rhabdomyomas and rhabdomyosarcomas).

## Product Details

---

Purification: Purified by Protein A/G

## Target Details

---

Target: ACTA1/ACTA2A/ACTG2

Abstract: [ACTA1/ACTA2A/ACTG2 Products](#)

Gene ID: 58, 59, 70

UniProt: [P62736](#), [P68032](#), [P68133](#)

## Application Details

---

Application Notes: Positive Control: Muscle or sarcoma.  
Known Application: Flow Cytometry (0.5-1 µg/million cells), Immunofluorescence (0.5-1 µg/mL), Immunohistochemistry (Formalin-fixed) (0.25-0.5 µg/mL for 30 minutes at RT),(Staining of formalin-fixed tissues requires boiling tissue sections in 10 mM citrate buffer, pH 6.0, for 10-20 min followed by cooling at RT for 20 minutes),Optimal dilution for a specific application should be determined.

Restrictions: For Research Use only

## Handling

---

Concentration: 200 µg/mL

Buffer: 10 mM PBS with 0.05 % BSA & 0.05 % azide.

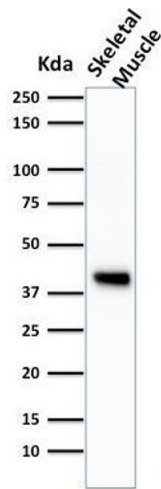
Preservative: Sodium azide

Precaution of Use: This product contains Sodium azide: a POISONOUS AND HAZARDOUS SUBSTANCE which should be handled by trained staff only.

Storage: 4 °C,-80 °C

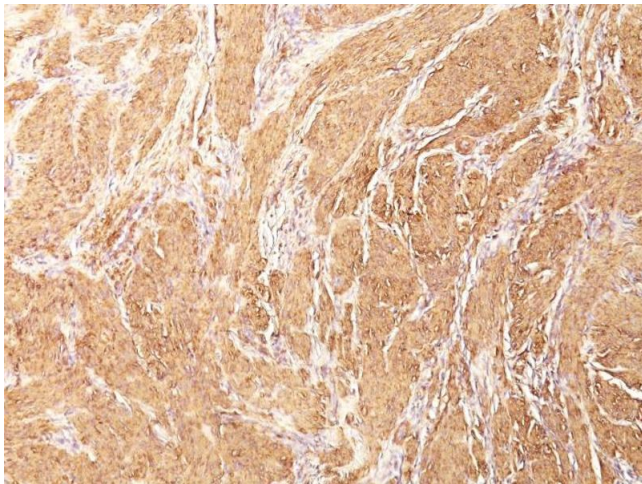
Storage Comment: Antibody with azide - store at 2 to 8°C. Antibody without azide - store at -20 to -80°C. Antibody is stable for 24 months. Non-hazardous. No MSDS required.

Expiry Date: 24 months



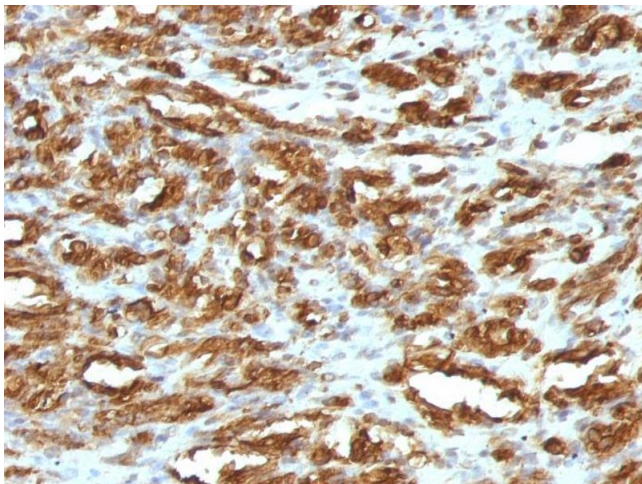
### Western Blotting

**Image 1.** Western Blot Analysis of Skeletal muscle tissue lysate using Muscle Specific Actin Mouse Monoclonal Antibody (HHF35).



### Immunohistochemistry

**Image 2.** Formalin-fixed, paraffin-embedded human Leiomyosarcoma stained with Muscle Specific Actin Mouse Monoclonal Antibody (HHF35).



### Immunohistochemistry

**Image 3.** Formalin-fixed, paraffin-embedded human Rhabdomyosarcoma stained with Muscle Specific Actin Mouse Monoclonal Antibody (HHF35).

Please check the [product details page](#) for more images. Overall 5 images are available for ABIN6941339.