

Datasheet for ABIN6941385
anti-Progesterone antibody

2 Images

[Go to Product page](#)

Overview

| | |
|--------------|---|
| Quantity: | 100 µg |
| Target: | Progesterone |
| Reactivity: | Please inquire |
| Host: | Mouse |
| Clonality: | Monoclonal |
| Conjugate: | This Progesterone antibody is un-conjugated |
| Application: | ELISA, Immunohistochemistry (IHC), Coating (Coat), Radioimmunoassay (RIA) |

Product Details

| | |
|--------------|---|
| Immunogen: | Progesterone- 11a-hemisuccinate conjugated to bovine serum albumin (Pr11a-HMS-BSA) |
| Clone: | 6-5E-10B |
| Isotype: | IgG1 kappa |
| Specificity: | This MAb is specific for progesterone. It exhibits minimal cross reactivity with related compounds in ELISA. It reacts with Progesterone-11a-HMS-BSA: 100 % , 5-beta-Pregnane-3,20-dione: 48 % , 5-alpha-Pregnane-3,20-dione: 26.4 % , 17-alpha-Hydroxyprogesterone: 2.5 % and 20-alpha-Hydroxyprogesterone: 0.04 % . Progesterone is a steroid hormone synthesized from the cholesterol derivative, pregnenolone, in the cortex of the adrenal gland. Progesterone is secreted by the corpus luteum and acts to prepare the endometrium for the implantation of a fertilized egg. During pregnancy, it is secreted by the placenta to prevent spontaneous abortion and to stimulate the development of mammary tissue to produce milk. Thus, progesterone plays a central role in the reproductive events associated with the establishment and maintenance of pregnancy. Luteinized theca cells of normal ovary secrete progesterone. The |

Product Details

determination of progesterone concentrations in the body fluids is of great value for endocrinological investigations in women. This MAb may prove useful in identification of ovarian tumors.

Purification: Purified by Protein A/G

Target Details

Target: Progesterone

Abstract: [Progesterone Products](#)

Target Type: Hormone

Molecular Weight: 314.46Da

Application Details

Application Notes: Positive Control: Ovary or Placenta.
Known Application: ELISA (For coating, order Ab without BSA), Immunohistochemistry (Not assessed), Radioimmunoassay (RIA)

Restrictions: For Research Use only

Handling

Concentration: 200 µg/mL

Buffer: 10 mM PBS with 0.05 % BSA & 0.05 % azide.

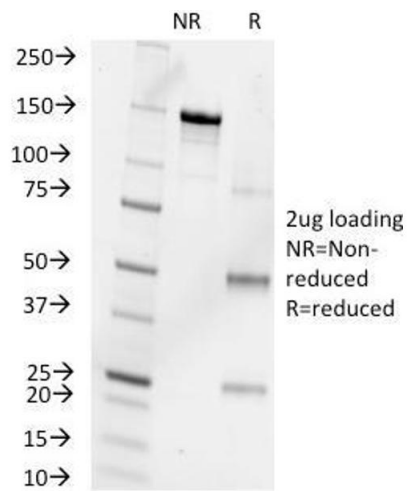
Preservative: Sodium azide

Precaution of Use: This product contains Sodium azide: a POISONOUS AND HAZARDOUS SUBSTANCE which should be handled by trained staff only.

Storage: 4 °C, -80 °C

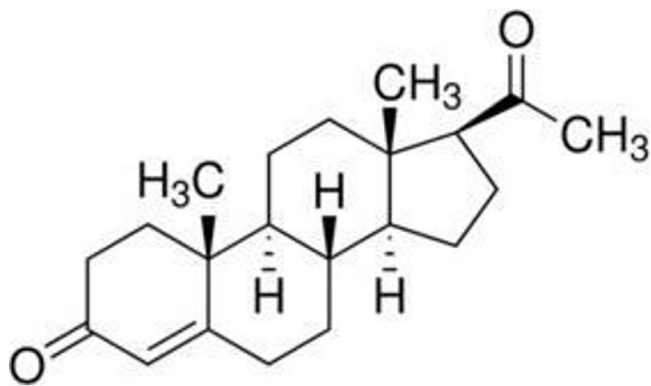
Storage Comment: Antibody with azide - store at 2 to 8°C. Antibody without azide - store at -20 to -80°C. Antibody is stable for 24 months. Non-hazardous. No MSDS required.

Expiry Date: 24 months



SDS-PAGE

Image 1. SDS-PAGE Analysis Purified Progesterone Mouse Monoclonal Antibody (6-5E-10B). Confirmation of Purity and Integrity of Antibody.



Molecule

Image 2. Molecular Structure of Progesterone