

Datasheet for ABIN6941388

Recombinant anti-MHC Class II HLA-DP/DQ/DR antibody[Go to Product page](#)**6** Images

Overview

Quantity:	100 µg
Target:	MHC Class II HLA-DP/DQ/DR (HLA-DP/DQ/DR)
Reactivity:	Human
Host:	Mouse
Antibody Type:	Recombinant Antibody
Clonality:	Monoclonal
Conjugate:	This MHC Class II HLA-DP/DQ/DR antibody is un-conjugated
Application:	Flow Cytometry (FACS), Immunofluorescence (IF), Immunohistochemistry (IHC), Coating (Coat), ELISA, Staining Methods (StM)

Product Details

Immunogen:	Non-T, non-B human acute lymphoblastic leukemia REH6 cells
Clone:	RHLA-Pan-3475
Isotype:	IgG1 kappa
Specificity:	Reacts with a common epitope of human major histocompatibility (MHC) class II antigens, HLA-DP, -DQ and -DR. Human MHC class II antigens are transmembrane glycoproteins composed of an alpha chain (36 kDa) and a beta chain (27 kDa). They are expressed primarily on antigen presenting cells such as B lymphocytes, monocytes, macrophages, and thymic epithelial cells and are also present on activated T lymphocytes. Human MHC class II genes are located in the HLA-D region that encodes at least six alpha and ten beta chain genes. Three loci, DR, DQ and DP, encode the major expressed products of the human class II region. The human

Product Details

MHC class II molecules bind intracellularly processed peptides and present them to T-helper cells. They, therefore, have a critical role in the initiation of the immune response.

Purification: Purified by Protein A/G

Target Details

Target: MHC Class II HLA-DP/DQ/DR (HLA-DP/DQ/DR)

Alternative Name: HLA-DP, HLA-DQ, HLA-DR ([HLA-DP/DQ/DR Products](#))

Molecular Weight: 33-35kDa

Gene ID: 3115, 3117, 3122

UniProt: [P04440](#), [P01908](#), [P01909](#), [P01920](#), [P01903](#)

Pathways: [Human Leukocyte Antigen \(HLA\) in Adaptive Immune Response](#)

Application Details

Application Notes: Positive Control: Raji cells. Tonsil or lymph node.
Known Application: ELISA (For coating use Ab at 1-5 µg/mL, order Ab without BSA), Flow Cytometry (1-2 µg/million cells), Immunofluorescence (1-2 µg/mL), Immunohistochemistry (Formalin-fixed) (1-2 µg/mL for 30 minutes at RT), (Staining of formalin-fixed tissues requires boiling tissue sections in 10 mM Citrate Buffer, pH 6.0, for 10-20 min followed by cooling at RT for 20 minutes)

Restrictions: For Research Use only

Handling

Concentration: 200 µg/mL

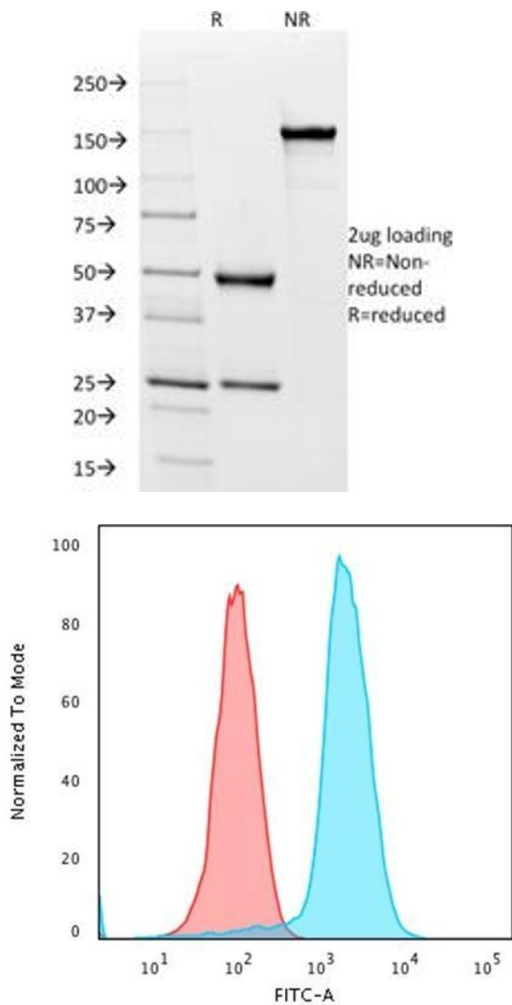
Buffer: 10 mM PBS with 0.05 % BSA & 0.05 % azide.

Preservative: Sodium azide

Precaution of Use: This product contains Sodium azide: a POISONOUS AND HAZARDOUS SUBSTANCE which should be handled by trained staff only.

Storage: 4 °C, -80 °C

Storage Comment: Antibody with azide - store at 2 to 8°C. Antibody without azide - store at -20 to -80°C. Antibody is stable for 24 months. Non-hazardous. No MSDS required.

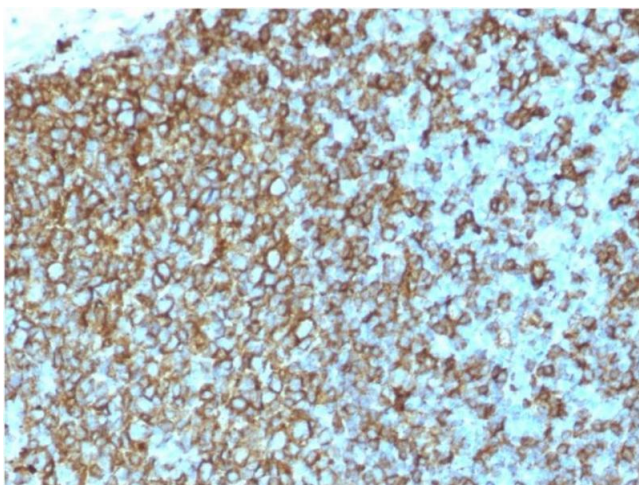


Western Blotting

Image 1. SDS-PAGE Analysis Purified HLA-Pan Mouse Recombinant Monoclonal (rHLA-Pan/3475). Confirmation of Purity and Integrity of Antibody.

Flow Cytometry

Image 2. Flow Cytometric Analysis of Human Raji cells using HLA-Pan Mouse Recombinant Monoclonal Antibody (rHLA-Pan/3475) followed by Goat anti-Mouse IgG-CF488 (Blue); Isotype control (Red).



Immunohistochemistry

Image 3. Formalin-fixed, paraffin-embedded human Tonsil stained with HLA-Pan Mouse Recombinant Monoclonal Antibody (rHLA-Pan/3475).

Please check the [product details page](#) for more images. Overall 6 images are available for ABIN6941388.