



[Go to Product page](#)

Datasheet for ABIN6941424  
**anti-Keratin Basic antibody**

1 Image

Overview

Quantity:	100 µg
Target:	Keratin Basic
Reactivity:	Human, Rat, Mouse
Host:	Mouse
Clonality:	Monoclonal
Conjugate:	Un-conjugated
Application:	Western Blotting (WB), Immunofluorescence (IF), Immunohistochemistry (IHC), Flow Cytometry (FACS), Staining Methods (StM)

Product Details

Immunogen:	Solubilized keratin extract from human stratum corneum
Clone:	SPM591
Isotype:	IgG1 kappa
Specificity:	This antibody recognizes CK1, CK5, CK10 and CK14. In normal epithelia, it stains stratified epithelia, myoepithelial cells and basal cells in the prostate gland and bronchi. This MAb shows no reactivity with hepatocytes, pancreatic acinar cells, proximal renal tubules, or endometrial glands, there is no reactivity with cells derived from simple epithelia. Mesenchymal tumors, lymphomas, melanomas, neural tumors, and neuroendocrine tumors are negative with this antibody. It stains myoepithelial cells and has been shown to be useful in distinguishing prostate adenocarcinoma from benign prostate. This antibody has also been useful in separating benign from malignant intraductal breast proliferations.

## Product Details

---

Purification: Purified by Protein A/G

## Target Details

---

Target: Keratin Basic

Alternative Name: Cytokeratin, Basic (Type II or HMW) ([Keratin Basic Products](#))

Molecular Weight: 67kDa (CK1), 58kDa (CK5), 56.5kDa (CK10), 50kDa (CK14)

Gene ID: 3848, 3852, 3858

UniProt: [P04264](#), [P13647](#), [P13645](#), [P02533](#)

## Application Details

---

Application Notes: Positive Control: PC12 cells, Skin, Prostate carcinoma.  
Known Application: Flow Cytometry (0.5-1 µg/million cells), Immunofluorescence (0.5-1.0 µg/mL), Western Blot (0.5-1.0 µg/mL), Immunohistochemistry (Formalin-fixed) (0.5-1.0 µg/mL for 30 min at RT)(Staining of formalin-fixed tissues requires boiling tissue sections in 10 mM citrate buffer, pH 6.0, for 10-20 min followed by cooling at RT for 20 minutes)Optimal dilution for a specific application should be determined.

Restrictions: For Research Use only

## Handling

---

Concentration: 200 µg/mL

Buffer: 10 mM PBS with 0.05 % BSA & 0.05 % azide.

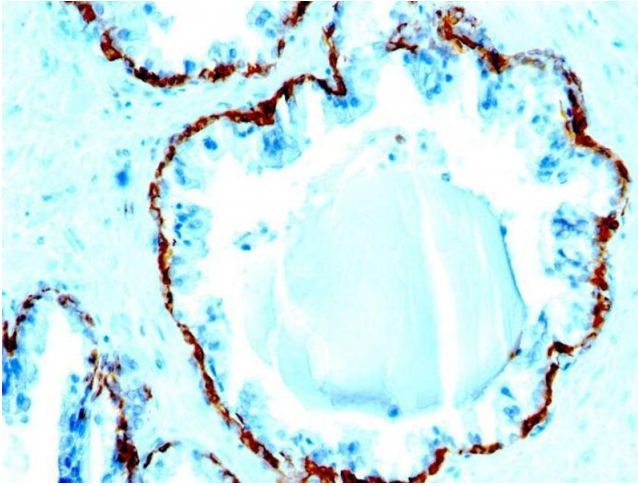
Preservative: Sodium azide

Precaution of Use: This product contains Sodium azide: a POISONOUS AND HAZARDOUS SUBSTANCE which should be handled by trained staff only.

Storage: 4 °C,-80 °C

Storage Comment: Antibody with azide - store at 2 to 8°C. Antibody without azide - store at -20 to -80°C. Antibody is stable for 24 months. Non-hazardous. No MSDS required.

Expiry Date: 24 months



### Immunohistochemistry

**Image 1.** Formalin-fixed, paraffin-embedded human Prostate Carcinoma stained with Cytokeratin, HMW Monoclonal Antibody (SPM591).