

Datasheet for ABIN6941458

Recombinant anti-Cytokeratin 2 antibody**3** Images[Go to Product page](#)

Overview

Quantity:	100 µg
Target:	Cytokeratin 2 (KRT76)
Reactivity:	Human, Mouse, Rat
Host:	Rabbit
Antibody Type:	Recombinant Antibody
Clonality:	Monoclonal
Conjugate:	This Cytokeratin 2 antibody is un-conjugated
Application:	Western Blotting (WB), Immunohistochemistry (IHC), Immunofluorescence (IF), Flow Cytometry (FACS), Staining Methods (StM)

Product Details

Immunogen:	Solubilized keratin extract from human stratum corneum
Clone:	KRTH-2147R
Isotype:	IgG
Specificity:	This antibody recognizes CK1, CK5, CK10 and CK14. In normal epithelia, it stains stratified epithelia, myoepithelial cells and basal cells in the prostate gland and bronchi. This MAb shows no reactivity with hepatocytes, pancreatic acinar cells, proximal renal tubules, or endometrial glands, there is no reactivity with cells derived from simple epithelia. Mesenchymal tumors, lymphomas, melanomas, neural tumors, and neuroendocrine tumors are negative with this antibody. It stains myoepithelial cells and has been shown to be useful in distinguishing prostate adenocarcinoma from benign prostate. This antibody has also been useful in

Product Details

separating benign from malignant intraductal breast proliferations.

Purification: Purified by Protein A/G

Target Details

Target: Cytokeratin 2 (KRT76)

Alternative Name: KRT76 ([KRT76 Products](#))

Molecular Weight: 50-67kDa

Gene ID: 51350

UniProt: [Q01546](#)

Application Details

Application Notes: Positive Control: MCF-7, PC12 cells, Skin, Prostate carcinoma.
Known Application: Flow Cytometry (1-2 µg/million cells), Immunofluorescence (1-2 µg/mL), Western Blot (1-2 µg/mL), Immunohistochemistry (Formalin-fixed) (0.25-0.5 µg/mL for 30 min at RT)(Staining of formalin-fixed tissues requires boiling tissue sections in 10 mM citrate buffer, pH 6.0, for 10-20 min followed by cooling at RT for 20 minutes)Optimal dilution for a specific application should be determined.

Restrictions: For Research Use only

Handling

Concentration: 200 µg/mL

Buffer: 10 mM PBS with 0.05 % BSA & 0.05 % azide.

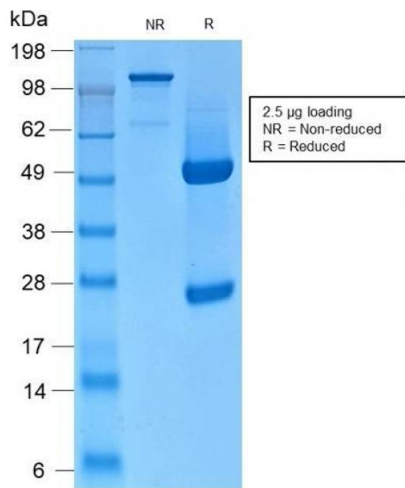
Preservative: Sodium azide

Precaution of Use: This product contains Sodium azide: a POISONOUS AND HAZARDOUS SUBSTANCE which should be handled by trained staff only.

Storage: 4 °C,-80 °C

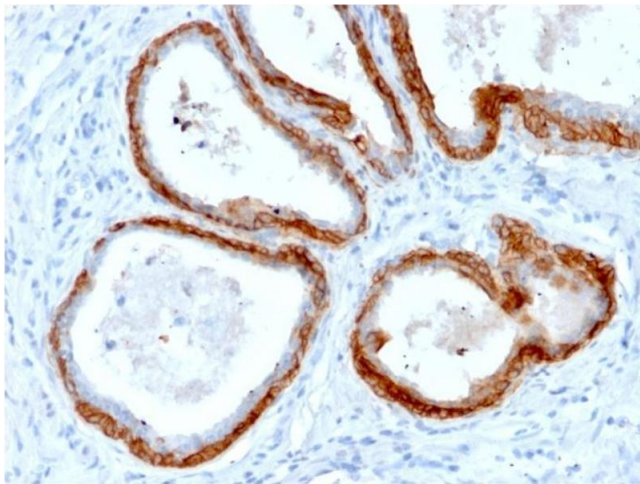
Storage Comment: Antibody with azide - store at 2 to 8°C. Antibody without azide - store at -20 to -80°C. Antibody is stable for 24 months. Non-hazardous. No MSDS required.

Expiry Date: 24 months



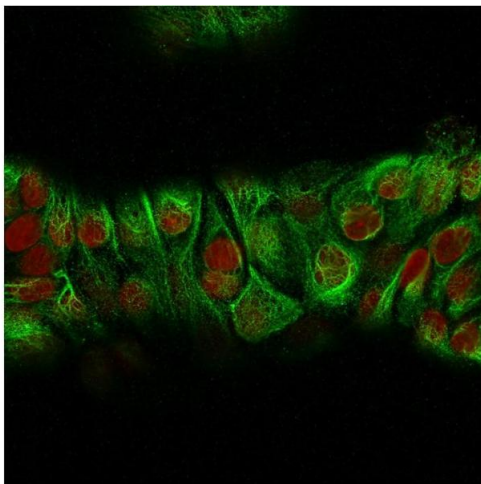
SDS-PAGE

Image 1. SDS-PAGE Analysis of Purified CK HMW Rabbit Recombinant Monoclonal Antibody (KRTH/2147R). Confirmation of Integrity and Purity of Antibody.



Immunohistochemistry

Image 2. Formalin-fixed, paraffin-embedded human Prostate Carcinoma stained with CK HMW Rabbit Recombinant Monoclonal Antibody (KRTH/2147R).



Immunofluorescence

Image 3. Immunofluorescence Analysis of MeOH-fixed Human MCF-7 cells labeling CK with CK HMW Rabbit Recombinant Monoclonal Antibody (KRTH/2147R) followed by Goat anti-Mouse IgG-CF488 (Green). The nuclear counterstain is Reddot (Red).