



[Go to Product page](#)

Datasheet for ABIN6941463

Recombinant anti-BrdU antibody

1 Image

Overview

Quantity:	100 µg
Target:	BrdU
Reactivity:	Please inquire
Host:	Rabbit
Antibody Type:	Recombinant Antibody
Clonality:	Monoclonal
Conjugate:	This BrdU antibody is un-conjugated
Application:	ELISA, Coating (Coat)

Product Details

Immunogen:	Bromodeoxyuridine (BrdU) conjugated to KLH
Clone:	BRD-1539R
Isotype:	IgG
Specificity:	It reacts with Bromodeoxyuridine (BrdU) in single stranded DNA (produced by partial denaturation of double stranded DNA), BrdU coupled to a protein carrier, as well as free BrdU. BrdU is a thymidine analog, incorporated into cell nuclei during DNA synthesis prior to mitosis. Antibody to BrdU is helpful in detecting S-phase cells, providing useful information on the aggressiveness of tumors.
Purification:	Purified by Protein A/G

Target Details

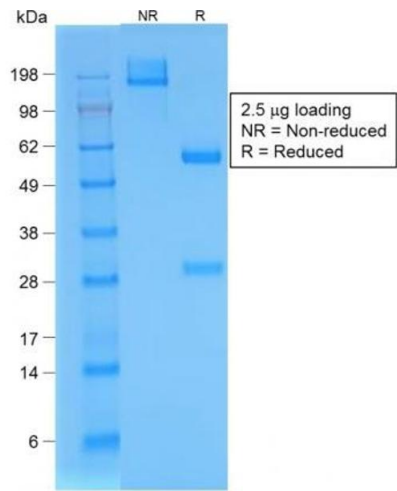
Target:	BrdU
Alternative Name:	Bromodeoxyuridine (BrdU) (Proliferation Marker) (BrdU Products)
Target Type:	Chemical
Molecular Weight:	307Da

Application Details

Application Notes:	Positive Control: Cells grown in presence of BrdU or tissues from experimental animals injected with BrdU. Known Application: ELISA (For coating, order antibody without BSA),Optimal dilution for a specific application should be determined.
Restrictions:	For Research Use only

Handling

Concentration:	200 µg/mL
Buffer:	10 mM PBS with 0.05 % BSA & 0.05 % azide.
Preservative:	Sodium azide
Precaution of Use:	This product contains Sodium azide: a POISONOUS AND HAZARDOUS SUBSTANCE which should be handled by trained staff only.
Storage:	4 °C,-80 °C
Storage Comment:	Antibody with azide - store at 2 to 8°C. Antibody without azide - store at -20 to -80°C. Antibody is stable for 24 months. Non-hazardous. No MSDS required.
Expiry Date:	24 months



SDS-PAGE

Image 1. SDS-PAGE Analysis Purified BrdU Rabbit Recombinant Monoclonal Antibody (BRD/1539R). Confirmation of Purity and Integrity of Antibody.