

Datasheet for ABIN6950981

CD24 Protein (AA 27-59) (His tag)**2** Images[Go to Product page](#)

Overview

Quantity:	100 µg
Target:	CD24
Protein Characteristics:	AA 27-59
Origin:	Human
Source:	HEK-293 Cells
Protein Type:	Recombinant
Purification tag / Conjugate:	This CD24 protein is labelled with His tag.

Product Details

Sequence:	AA 27-59
Purity:	>90 % as determined by SDS-PAGE.
Endotoxin Level:	Less than 1.0 EU per µg by the LAL method.

Target Details

Target:	CD24
Alternative Name:	CD24 (CD24 Products)
Background:	CD24 may have a pivotal role in cell differentiation of different cell types. Signaling could be triggered by the binding of a lectin-like ligand to the CD24 carbohydrates, and transduced by the release of second messengers derived from the GPI-anchor. Modulates B-cell activation responses. Promotes AG-dependent proliferation of B-cells, and prevents their terminal differentiation into antibody-forming cells. In association with SIGLEC10 may be involved in the

Target Details

	selective suppression of the immune response to danger-associated molecular patterns (DAMPs) such as HMGB1, HSP70 and HSP90. Plays a role in the control of autoimmunity.
Molecular Weight:	5.0 kDa
NCBI Accession:	NP_001278666
Pathways:	Regulation of Leukocyte Mediated Immunity , Positive Regulation of Immune Effector Process , Activated T Cell Proliferation

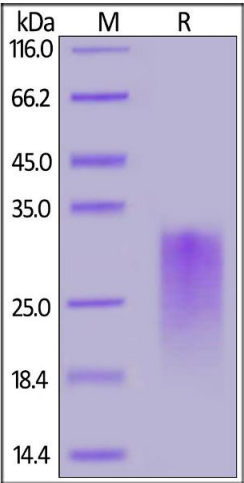
Application Details

Restrictions:	For Research Use only
---------------	-----------------------

Handling

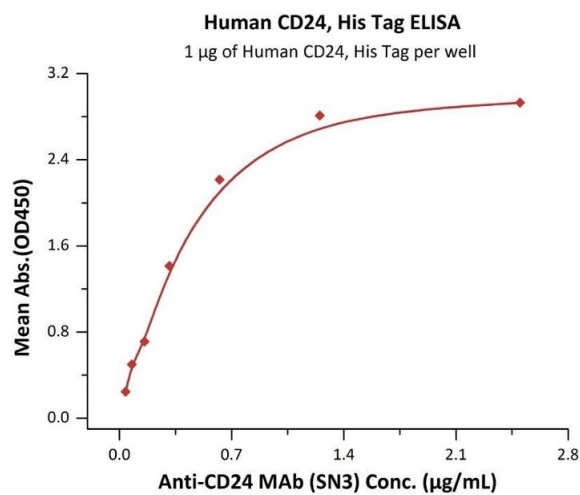
Format:	Lyophilized
Buffer:	PBS, pH 7.4
Handling Advice:	Please avoid repeated freeze-thaw cycles.
Storage:	-20 °C

Images



SDS-PAGE

Image 1. Human CD24, His Tag on under reducing (R) condition. The gel was stained overnight with Coomassie Blue. The purity of the protein is greater than 90 % .



ELISA

Image 2. Immobilized Human CD24, His Tag (ABIN6938934,ABIN6950981) at 10 µg/mL (100 µL/well) can bind A MAb (SN3) with a linear range of 0.039-0.625 µg/mL (QC tested).