



[Go to Product page](#)

Datasheet for ABIN6950993

## MUC1 Protein (AA 890-1158) (His tag)

### 2 Images

#### Overview

Quantity:	100 µg
Target:	MUC1
Protein Characteristics:	AA 890-1158
Origin:	Human
Source:	HEK-293 Cells
Protein Type:	Recombinant
Purification tag / Conjugate:	This MUC1 protein is labelled with His tag.

#### Product Details

Purity:	>90 % as determined by SDS-PAGE.
Endotoxin Level:	Less than 1.0 EU per µg by the LAL method.

#### Target Details

Target:	MUC1
Alternative Name:	Mucin-1 ( <a href="#">MUC1 Products</a> )
Background:	Mucin-1 (MUC1) is also known as Tumor-associated epithelial membrane antigen (EMA), Polymorphic epithelial mucin (PEM), Peanut-reactive urinary mucin (PUM), PEMT, Krebs von den Lungen-6 (KL-6), CD antigen CD227, Episialin, H23AG. MUC1 is a glycoprotein with extensive O-linked glycosylation of its extracellular domain. Mucins line the apical surface of epithelial cells in the lungs, stomach, intestines, eyes and several other organs. Mucins protect the body from infection by pathogen binding to oligosaccharides in the extracellular domain,

## Target Details

preventing the pathogen from reaching the cell surface. Except protective function by binding to pathogens, MUC1 also functions in a cell signaling capacity. Overexpression of MUC1 is often associated with colon, breast, ovarian, lung and pancreatic cancers.

Molecular Weight: 21.3 kDa (partial  $\alpha$  chain) & 8.4 kDa (partial  $\beta$  chain)

Pathways: [Negative Regulation of intrinsic apoptotic Signaling](#)

## Application Details

Restrictions: For Research Use only

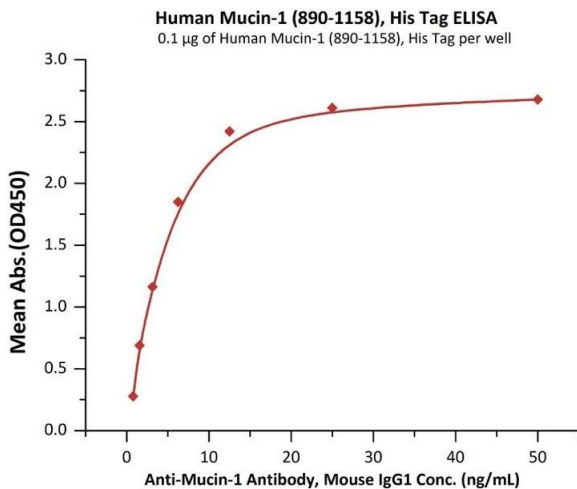
## Handling

Format: Lyophilized

Buffer: PBS, pH 7.4

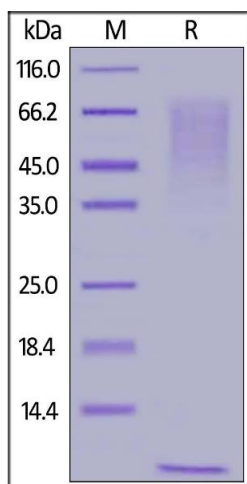
Storage: -20 °C

## Validation report #104441 for Multiplex Immunohistochemistry (mIHC)



### ELISA

**Image 1.** Immobilized Human Mucin-1 , His Tag (ABIN6938930,ABIN6950993) at 1  $\mu$ g/mL (100  $\mu$ L/well) can bind A-1 Antibody, Mouse IgG1 with a linear range of 0.4-6 ng/mL (QC tested).



#### SDS-PAGE

**Image 2.** Human Mucin-1 , His Tag on under reducing (R) condition. The gel was stained overnight with Coomassie Blue. The purity of the protein is greater than 90 % .