



[Go to Product page](#)

Datasheet for ABIN6952004

anti-PVALB antibody (Alkaline Phosphatase (AP))

2 Images

Overview

Quantity:	100 µg
Target:	PVALB
Reactivity:	Rat
Host:	Mouse
Clonality:	Monoclonal
Conjugate:	This PVALB antibody is conjugated to Alkaline Phosphatase (AP)
Application:	Western Blotting (WB), ELISA, Immunohistochemistry (IHC), Immunofluorescence (IF), Immunocytochemistry (ICC)

Product Details

Immunogen:	Synthetic peptide from the full length Rat Parvalbumin protein
Clone:	C12
Isotype:	IgG2a
Specificity:	Retina. Expressed throughout the horizontal cells and/or terminals., Detects 12 kDa.
Cross-Reactivity:	Human, Mouse, Rat
Purification:	Protein A Purified

Target Details

Target:	PVALB
Alternative Name:	parvalbumin (PVALB Products)

Target Details

Background: Parvalbumin is involved in calcium signaling. Alterations in the function of parvalbumin-expressing neurons have been implicated in Alzheimer's, autism, schizophrenia, age-related cognitive defects and some forms of cancer (1).

Gene ID: 25269

NCBI Accession: [NP_071944](#)

UniProt: [P02625](#)

Application Details

Application Notes:

- WB (1:500)
- optimal dilutions for assays should be determined by the user.

Comment: A 1:500 dilution of ABIN6952004 was sufficient for detection of Parvalbumin in 15 ug of Rat Brain by ECL immunoblot analysis using goat anti-mouse IgG:HRP as the secondary antibody.

Restrictions: For Research Use only

Handling

Format: Liquid

Concentration: 1 mg/mL

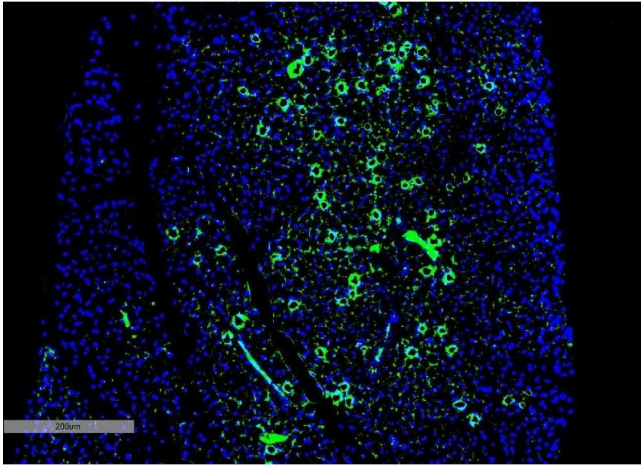
Buffer: PBS pH 7.4, 50 % glycerol, 0.09 % Sodium azide, Storage buffer may change when conjugated

Preservative: Sodium azide

Precaution of Use: This product contains Sodium azide: a POISONOUS AND HAZARDOUS SUBSTANCE which should be handled by trained staff only.

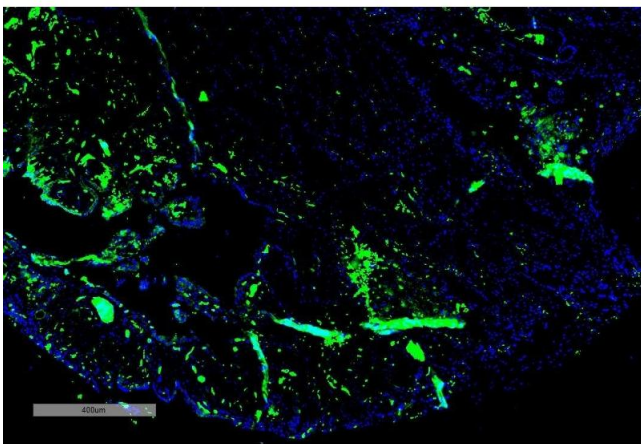
Storage: 4 °C

Storage Comment: Conjugated antibodies should be stored at 4°C



Immunohistochemistry

Image 1. Immunohistochemistry analysis using Mouse Anti-Parvalbumin Monoclonal Antibody, Clone C12 (ABIN6952004). Tissue: Thyroid. Species: Mouse. Primary Antibody: Mouse Anti-Parvalbumin Monoclonal Antibody (ABIN6952004) at 1:100 for Overnight at 4C, then 30 min at 37C. Secondary Antibody: Goat Anti-Mouse IgG (H+L): FITC for 45 min at 37C. Counterstain: DAPI for 3 min at RT. Magnification: 5X.



Immunohistochemistry

Image 2. Immunohistochemistry analysis using Mouse Anti-Parvalbumin Monoclonal Antibody, Clone C12 (ABIN6952004). Tissue: Thyroid Cancer. Species: Human. Primary Antibody: Mouse Anti-Parvalbumin Monoclonal Antibody (ABIN6952004) at 1:100 for Overnight at 4C, then 30 min at 37C. Secondary Antibody: Goat Anti-Mouse IgG (H+L): FITC for 45 min at 37C. Counterstain: DAPI for 3 min at RT. Magnification: 5X.