

Datasheet for ABIN6952152

CCL19 Protein (AA 22-98) (Biotin)[Go to Product page](#)**1** Image

Overview

Quantity:	100 µg
Target:	CCL19
Protein Characteristics:	AA 22-98
Origin:	Human
Source:	Escherichia coli (E. coli)
Protein Type:	Recombinant
Biological Activity:	Active
Purification tag / Conjugate:	This CCL19 protein is labelled with Biotin.
Application:	Cell Migration Assay (CMA)

Product Details

Sequence:	GTNDAEDCCL SVTQKPIPGY IVRNFHYLLI KDGCVRPAVV FTTLRGRQLC APPDQPWVER IIQRLQRTSA KMKRRSS
Characteristics:	Biotinylated Recombinant Human CCL19 (MIP-3beta)
Purity:	> 97 % by SDS PAGE
Endotoxin Level:	<0.01 EU per 1µg of the protein by the LAL method
Biological Activity Comment:	EC50 = 18-25 nM determined by migration assay with cells expressing recombinant CCR7

Target Details

Target:	CCL19
---------	-------

Target Details

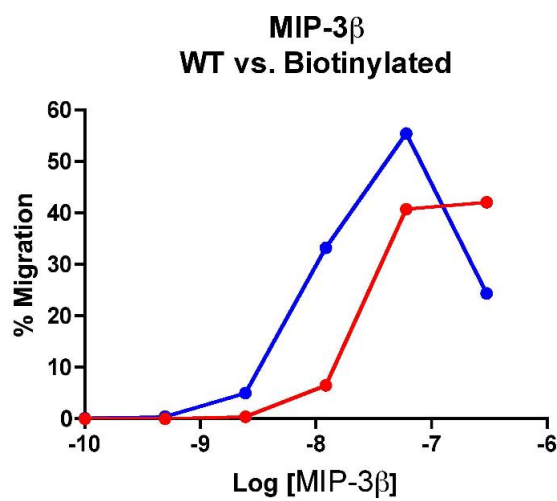
Alternative Name:	CCL19 (MIP-3beta) (CCL19 Products)
Background:	Macrophage inflammatory protein-3-beta (MIP-3beta/CCL19), also known as EBI1 ligand chemokine (ELC), directs chemotaxis of dendritic cells, and certain B- and T- lymphocytes, but not monocytes or granulocytes. It is constitutively expressed in thymus and lymph nodes and binds specifically to target cells expressing the receptor CCR7. Being a homeostatic chemokine, its primary physiological role is considered to be in the normal recirculation and homing of lymphocyte. However, MIP-3beta could also be proinflammatory, and is implicated in the post-HIV infection responses.
Molecular Weight:	11.219 kDa
UniProt:	Q99731
Pathways:	Positive Regulation of Immune Effector Process

Application Details

Application Notes:	Optimal working dilution should be determined by the investigator.
Restrictions:	For Research Use only

Handling

Format:	Lyophilized
Reconstitution:	Spin tube prior to resuspending. Recommended at 100 µg/mL in sterile water
Storage:	-20 °C, -80 °C
Storage Comment:	12 months from date of receipt, -20 to -70 °C as supplied. Suggest to use immediately after reconstitution 1 month at -20 to -70 °C under sterile conditions after reconstitution.
Expiry Date:	12 months



Cellular Assay

Image 1. Cells expressing recombinant CCR7 were assayed for migration through a transwell filter at various concentrations of WT or Biotinylated MIP-3 β . Responses are expressed as the % of total input cells (Blue: wild type; Red: biotinylated).