

Datasheet for ABIN6952156
CCL19 Protein (AA 22-98)[Go to Product page](#)

1 Image

Overview

| | |
|--------------------------|----------------------------|
| Quantity: | 100 µg |
| Target: | CCL19 |
| Protein Characteristics: | AA 22-98 |
| Origin: | Human |
| Source: | Escherichia coli (E. coli) |
| Protein Type: | Recombinant |
| Biological Activity: | Active |
| Application: | Cell Migration Assay (CMA) |

Product Details

| | |
|------------------------------|---|
| Sequence: | GTNDAEDCCL SVTQKPIPGY IVRNFHYLLI KDGCRVPAVV FTTLRGRQLC APPDQPWVER IIQRLQRTSA KMKRRSS |
| Characteristics: | Recombinant Human CCL19 (MIP-3beta) |
| Purity: | > 97 % by SDS PAGE |
| Endotoxin Level: | <0.01 EU per 1µg of the protein by the LAL method |
| Biological Activity Comment: | EC50 = 7.0 nM determined by Migration Assay with recombinant human CCR7 |

Target Details

| | |
|-------------------|--|
| Target: | CCL19 |
| Alternative Name: | CCL19 (MIP-3beta) (CCL19 Products) |

Target Details

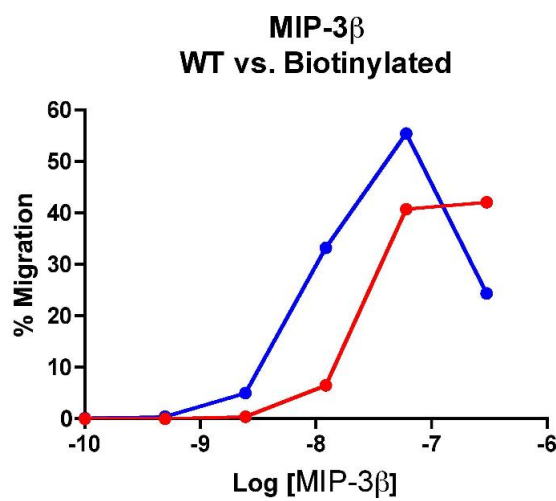
| | |
|-------------------|--|
| Background: | Macrophage inflammatory protein-3-beta (MIP-3beta/CCL19), also known as EBI1 ligand chemokine (ELC), directs chemotaxis of dendritic cells, and certain B- and T- lymphocytes, but not monocytes or granulocytes. It is constitutively expressed in thymus and lymph nodes and binds specifically to target cells expressing the receptor CCR7. Being a homeostatic chemokine, its primary physiological role is considered to be in the normal recirculation and homing of lymphocyte. However, MIP-3beta could also be proinflammatory, and is implicated in the post-HIV infection responses. |
| Molecular Weight: | 8.800 kDa |
| UniProt: | Q99731 |
| Pathways: | Positive Regulation of Immune Effector Process |

Application Details

| | |
|--------------------|--|
| Application Notes: | Optimal working dilution should be determined by the investigator. |
| Restrictions: | For Research Use only |

Handling

| | |
|------------------|--|
| Format: | Lyophilized |
| Reconstitution: | Spin tube prior to resuspending. Recommended at 100 µg/mL in sterile water |
| Storage: | -20 °C,-80 °C |
| Storage Comment: | 12 months from date of receipt, -20 to -70 °C as supplied. Suggest to use immediately after reconstitution 1 month at -20 to -70 °C under sterile conditions after reconstitution. |
| Expiry Date: | 12 months |



Cellular Assay

Image 1. Cells expressing recombinant CCR7 were assayed for migration through a transwell filter at various concentrations of WT or Biotinylated MIP-3 β . Responses are expressed as the % of total input cells (Blue: wild type; Red: biotinylated).