

Datasheet for ABIN6952184

CCL3 Protein (AA 24-92) (Biotin)[Go to Product page](#)**1** Image

Overview

Quantity:	100 µg
Target:	CCL3
Protein Characteristics:	AA 24-92
Origin:	Human
Source:	Escherichia coli (E. coli)
Protein Type:	Recombinant
Biological Activity:	Active
Purification tag / Conjugate:	This CCL3 protein is labelled with Biotin.
Application:	Cell Migration Assay (CMA)

Product Details

Sequence:	SLAADTPTAC CFSYTSRQIP QNFIADYFET SSQCSKPGVI FLTKRSRQVC ADPSEEWVQK YVSDLELSA
Characteristics:	Biotinylated Recombinant Human CCL3 (MIP-1alpha)
Purity:	> 97 % by SDS PAGE
Endotoxin Level:	<0.01 EU per 1µg of the protein by the LAL method
Biological Activity Comment:	EC50 = 1.1-2.6 nM determined by Migration Assay of recombinant CCR5 containing cells

Target Details

Target:	CCL3
---------	------

Target Details

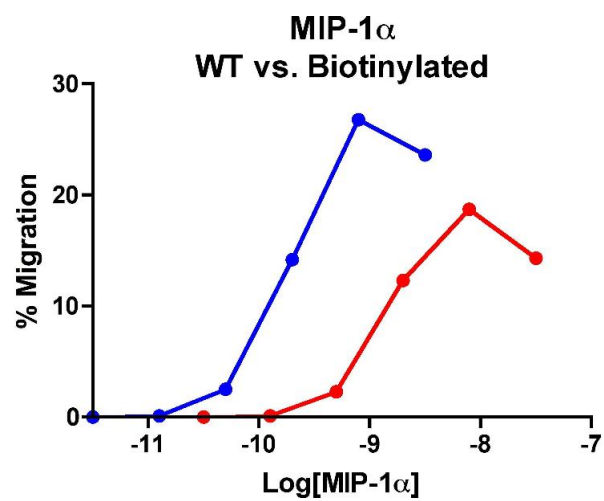
Alternative Name:	CCL3 (MIP-1alpha) (CCL3 Products)
Background:	Macrophage inflammatory proteins 1-alpha (MIP1alpha)(CCL3) binds to cell surface receptors CCR1 and CCR5. It is proinflammatory, leading to chemotaxis and activation of immune cells. It also inhibits proliferation of hematopoietic stem cells. Moreover, by binding to one of the HIV coreceptors, CCR5, it suppresses HIV infection.
Molecular Weight:	10.135 kDa
UniProt:	P10147
Pathways:	Cellular Response to Molecule of Bacterial Origin, Autophagy

Application Details

Application Notes:	Optimal working dilution should be determined by the investigator.
Restrictions:	For Research Use only

Handling

Format:	Lyophilized
Reconstitution:	Spin tube prior to resuspending. Recommended at 100 µg/mL in sterile water
Storage:	-20 °C, -80 °C
Storage Comment:	12 months from date of receipt, -20 to -70 °C as supplied. Suggest to use immediately after reconstitution 1 month at -20 to -70 °C under sterile conditions after reconstitution.
Expiry Date:	12 months



Cellular Assay

Image 1. Cells expressing recombinant CCR5 were assayed for migration through a transwell filter at various concentrations of WT or Biotinylated MIP-1 α . Responses are expressed as the % of total input cells (Blue: wild type; Red: biotinylated).