

Datasheet for ABIN6952269

FOLR1 Protein (AA 25-233) (His tag)**3** Images[Go to Product page](#)

Overview

Quantity:	100 µg
Target:	FOLR1
Protein Characteristics:	AA 25-233
Origin:	Human
Source:	HEK-293 Cells
Protein Type:	Recombinant
Biological Activity:	Active
Purification tag / Conjugate:	This FOLR1 protein is labelled with His tag.

Product Details

Sequence:	AA 25-233
Purity:	>95 % as determined by SDS-PAGE.
Endotoxin Level:	Less than 1.0 EU per µg by the LAL method.

Target Details

Target:	FOLR1
Alternative Name:	FOLR1 (FOLR1 Products)
Background:	Folate Receptor 1 (FOLR1) is also known as Folate receptor alpha, Folate Binding Protein (FBP), FOLR, and is a member of the folate receptor (FOLR) family. Members of this gene family have a high affinity for folic acid and for several reduced folic acid derivatives, and mediate delivery of 5-methyltetrahydrofolate to the interior of cells. Mature FOLR1 is an N-glycosylated protein

Target Details

that is anchored to the cell surface by a GPI linkage. FOLR1 is predominantly expressed on epithelial cells and is dramatically upregulated on many carcinomas. FOLR1 is internalized to the endosomal system where it dissociates from its ligand before recycling to the cell surface. A soluble form of FOLR1 can be proteolytically shed from the cell surface into the serum and breast milk. Defects in FOLR1 are the cause of neurodegeneration due to cerebral folate transport deficiency (NCFTD). NCFTD is an autosomal recessive disorder resulting from brain-specific folate deficiency early in life.

Molecular Weight: 26.5 kDa

NCBI Accession: [NP_057937](#)

Pathways: [Dicarboxylic Acid Transport](#)

Application Details

Restrictions: For Research Use only

Handling

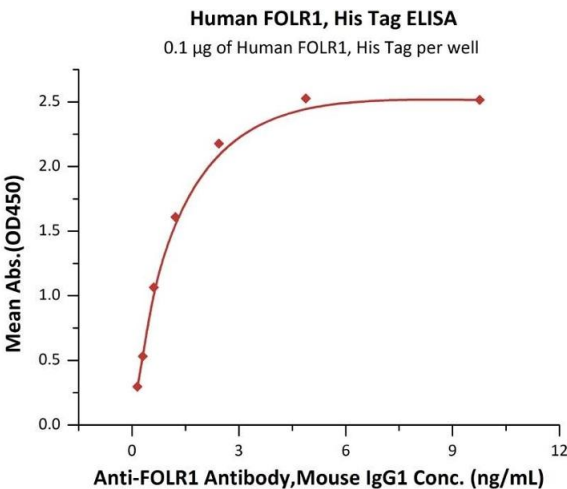
Format: Lyophilized

Buffer: 50 mM Tris, 100 mM Glycine, pH 7.5

Handling Advice: Please avoid repeated freeze-thaw cycles.

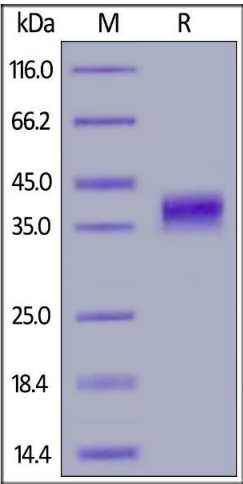
Storage: -20 °C

Images



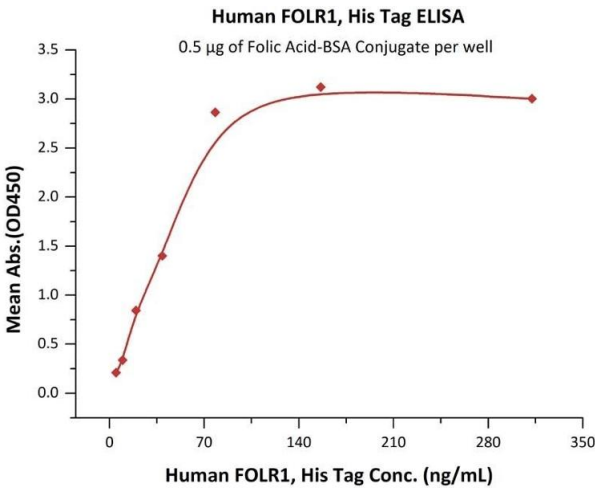
ELISA

Image 1. Immobilized Human FOLR1, His Tag (ABIN6951041, ABIN6952269) at 1 µg/mL (100 µL/well) can bind A Antibody, Mouse IgG1 with a linear range of 0.2-1 ng/mL (QC tested).



SDS-PAGE

Image 2. Human FOLR1, His Tag on under reducing (R) condition. The gel was stained overnight with Coomassie Blue. The purity of the protein is greater than 95 % .



ELISA

Image 3. Immobilized Folic Acid-BSA Conjugate at 5 µg/mL (100 µL/well) can bind Human FOLR1, His Tag (ABIN6951041,ABIN6952269) with a linear range of 5-78 ng/mL (QC tested).